

Product datasheet for CR561250

Tissue Total RNA, Endometrium

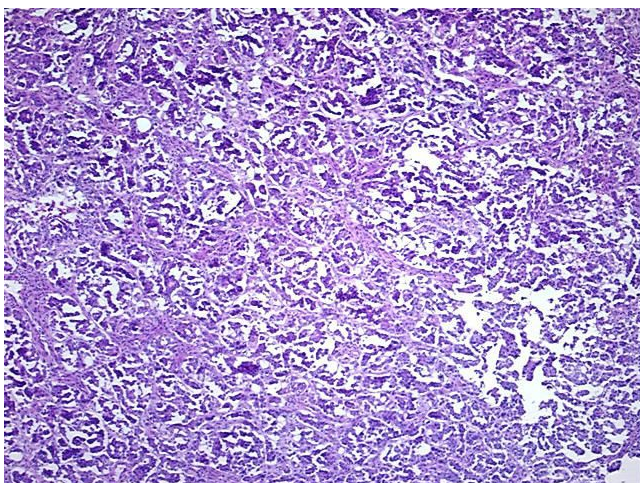
Product data:

Product Type:	Total RNA
Disease State:	Cancer
Diagnosis Category:	Endometrial Cancer
Tissue:	Endometrium
Frozen Sample ID:	FR0000680E
Case ID:	CI0000000323
Prep:	3
Vial ID:	RN00003127
Tissue of Origin:	Endometrium
Site of Finding:	Endometrium
Appearance:	Tumor
Sample Diagnosis (from Pathology Verification):	Adenocarcinoma of endometrium, serous
Normal:	0%
Lesional:	0%
Tumor:	90%
Tumor Hypo/Acellular Stroma:	5%
Tumor Hypercellular Stroma:	4%
Necrosis:	1%
Bioanalyzer Ratio (28S/18S):	1.41
CASE Diagnosis (from medical center path report):	Adenocarcinoma of endometrium, serous
Age:	69

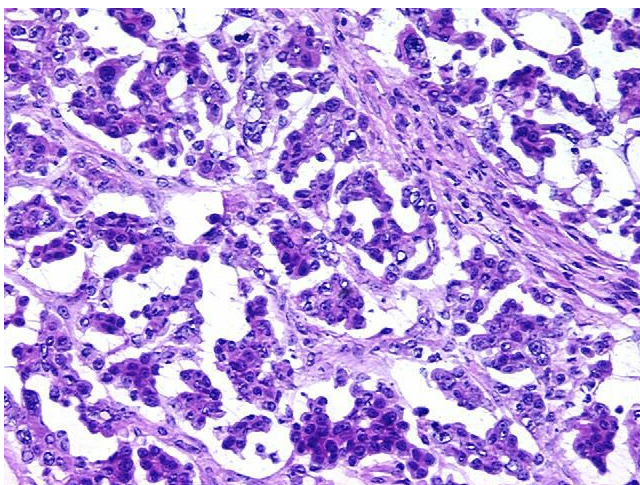


[View online »](#)

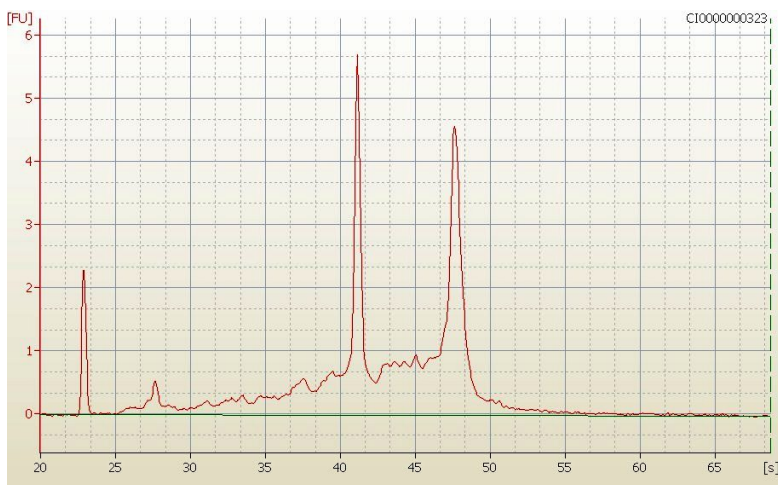
Gender:	Female
Race:	Black or African American
Tumor Grade:	FIGO G2: Moderately differentiated
Minimum Stage Grouping:	IIIA
T (Extent of Primary Tumor):	T3a
N (Lymph node metastasis):	NX
M (Distant metastasis):	MX
Storage:	Store tissue total RNA at -80°C.
Stability:	These products are stable for one year from date of shipping when stored at -80°C without repeated freeze/thaws.

Product images:

4x Image



20x Image



RNA Electropherogram Image



RNA RT-PCR Image