

Product datasheet for CR561216

Tissue Total RNA, Lung

Product data:

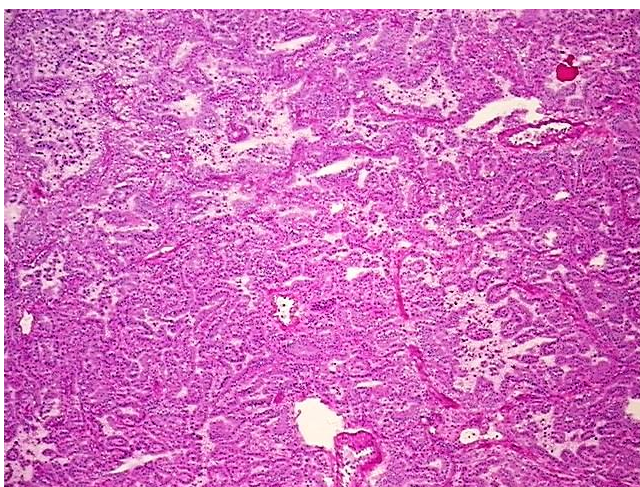
Product Type:	Total RNA
Disease State:	Cancer
Diagnosis Category:	Lung Cancer
Tissue:	Lung
Frozen Sample ID:	FR00022118
Case ID:	CI0000007612
Prep:	1
Vial ID:	RN00001662
Tissue of Origin:	Lung
Site of Finding:	Lung
Appearance:	Tumor
Sample Diagnosis (from Pathology Verification):	Adenocarcinoma of lung, papillary
Normal:	0%
Lesional:	0%
Tumor:	80%
Tumor Hypo/Acellular Stroma:	10%
Tumor Hypercellular Stroma:	8%
Necrosis:	2%
Bioanalyzer Ratio (28S/18S):	1.38
CASE Diagnosis (from medical center path report):	Adenocarcinoma of lung, papillary
Age:	77



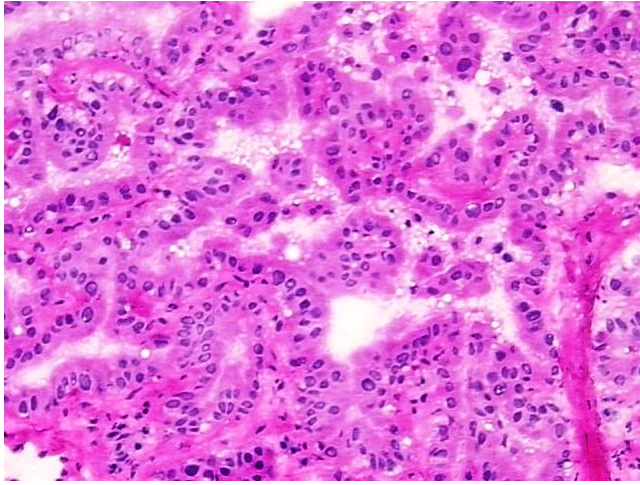
[View online »](#)

Gender:	Male
Race:	White or Caucasian
Tumor Grade:	AJCC G1: Well differentiated
Minimum Stage Grouping:	IA
T (Extent of Primary Tumor):	T1
N (Lymph node metastasis):	NX
M (Distant metastasis):	MX
Diagnostic Test Results:	Thyroglobulin ~ TGB ~ THYRO,Negative; Vimentin ~ VIM ! by IHC,Negative; Cytokeratin 7 ~ CK7 ! by IHC,Positive; Cytokeratin 20 ~ CK20 ! by IHC,Positive, focal; Cytokeratin CAM5.2 ~ CAM5.2 ! by IHC,Positive; Cytokeratin AE1/AE3 ~ AE1/AE3 ! by
Storage:	Store tissue total RNA at -80°C.
Stability:	These products are stable for one year from date of shipping when stored at -80°C without repeated freeze/thaws.

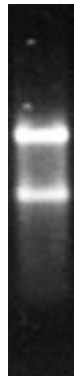
Product images:



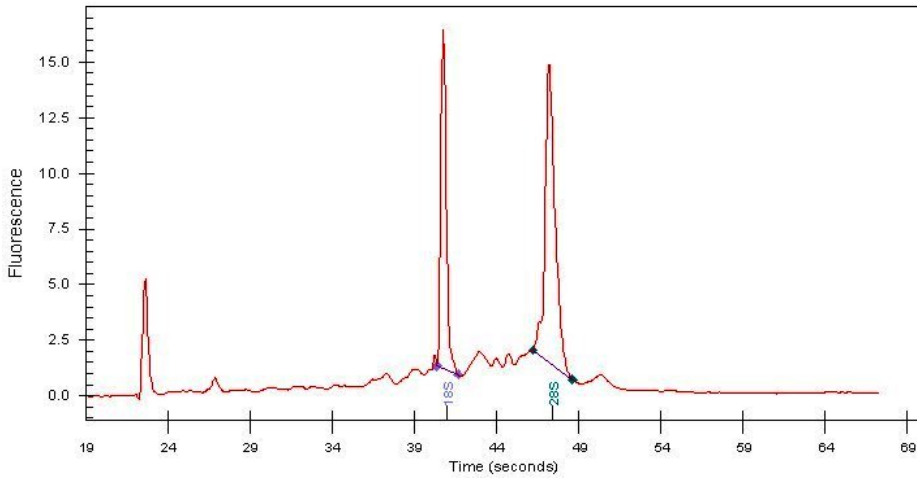
4x Image



20x Image



RNA Gel Image



RNA Electropherogram Image



RNA RT-PCR Image