

Product datasheet for CR561207

Tissue Total RNA, Lung

Product data:

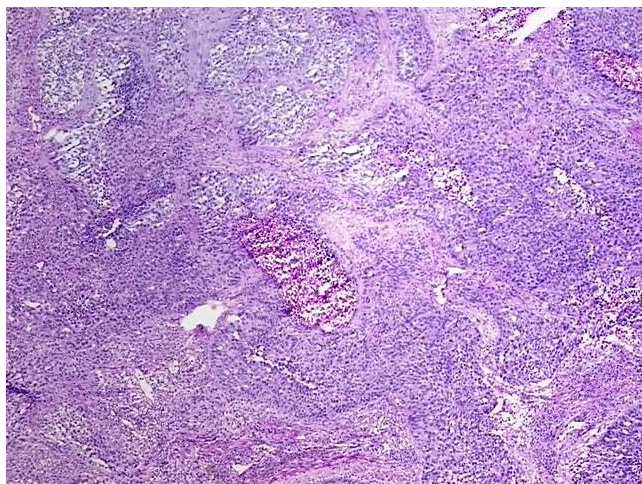
Product Type:	Total RNA
Disease State:	Cancer
Diagnosis Category:	Lung Cancer
Tissue:	Lung
Frozen Sample ID:	FR6A38B42F
Case ID:	CI0000007303
Prep:	2
Vial ID:	RN0000104F
Tissue of Origin:	Lung
Site of Finding:	Lung
Appearance:	Tumor
Sample Diagnosis (from Pathology Verification):	Carcinoma of lung, non-small cell
Normal:	10%
Lesional:	0%
Tumor:	75%
Tumor Hypo/Acellular Stroma:	10%
Tumor Hypercellular Stroma:	0%
Necrosis:	5%
Bioanalyzer Ratio (28S/18S):	1.2
CASE Diagnosis (from medical center path report):	Carcinoma of lung, non-small cell
Age:	63



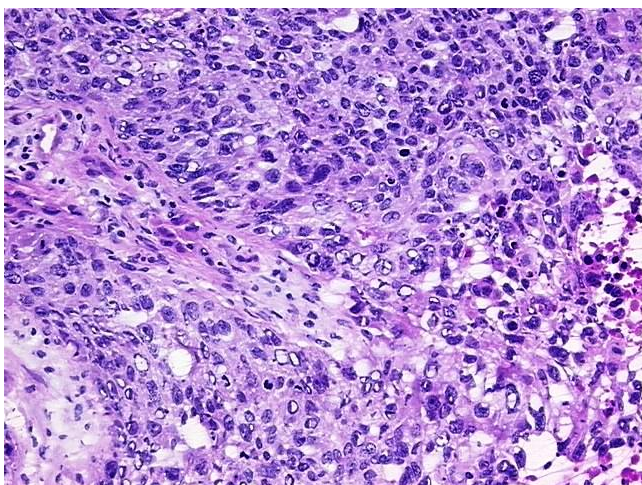
[View online »](#)

Gender:	Male
Tumor Grade:	AJCC G3: Poorly differentiated
Minimum Stage Grouping:	IIB
T (Extent of Primary Tumor):	T2
N (Lymph node metastasis):	N1
M (Distant metastasis):	MX
Diagnostic Test Results:	Cytokeratins (5 and 6) ~ CK5,6 ! by IHC,Positive, weak; Neuron specific enolase ~ NSE ! by IHC,Negative; Synaptophysin ~ SYN ! by IHC,Negative; Chromogranin A ~ Parathyroid secretory protein 1 ! by IHC,Negative
Storage:	Store tissue total RNA at -80°C.
Stability:	These products are stable for one year from date of shipping when stored at -80°C without repeated freeze/thaws.

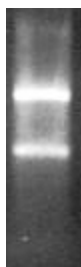
Product images:



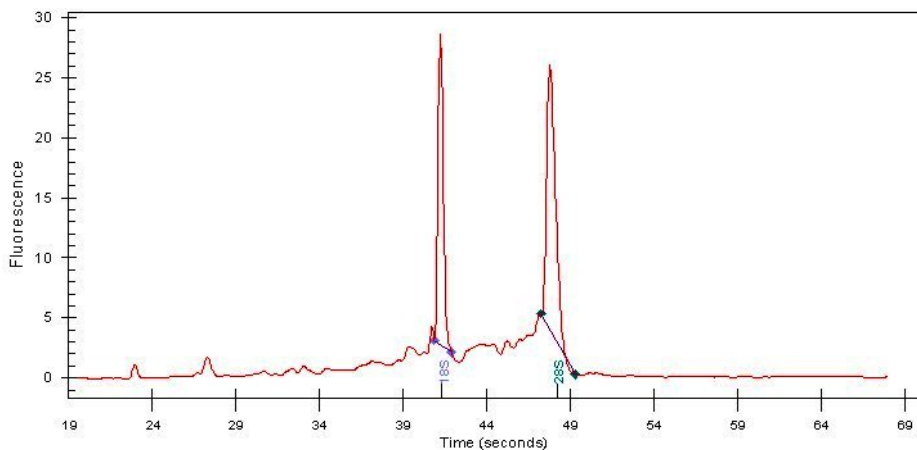
4x Image



20x Image



RNA Gel Image



RNA Electropherogram Image



RNA RT-PCR Image