

## Product datasheet for CR561201

### Tissue Total RNA, Endometrium

#### Product data:

Product Type:	Total RNA
Disease State:	Cancer
Diagnosis Category:	Endometrial Cancer
Tissue:	Endometrium
Frozen Sample ID:	FR00007A3E
Case ID:	CI0000000441
Prep:	1
Vial ID:	RN00003B16
Tissue of Origin:	Endometrium
Site of Finding:	Endometrium
Appearance:	Tumor
Sample Diagnosis (from Pathology Verification):	Carcinoma of endometrium, papillary serous
Normal:	5%
Lesional:	0%
Tumor:	80%
Tumor Hypo/Acellular Stroma:	5%
Tumor Hypercellular Stroma:	0%
Necrosis:	10%
Pathology Verification notes from H&E review:	Tumor area: 6 mm x 4 mm
Bioanalyzer Ratio (28S/18S):	1.73



[View online »](#)

**CASE Diagnosis (from medical center path report):** Carcinoma of endometrium, papillary serous

**Age:** 66

**Gender:** Female

**Tumor Grade:** FIGO G3: Poorly differentiated

**Minimum Stage Grouping:** IIIC

**T (Extent of Primary Tumor):** T1c

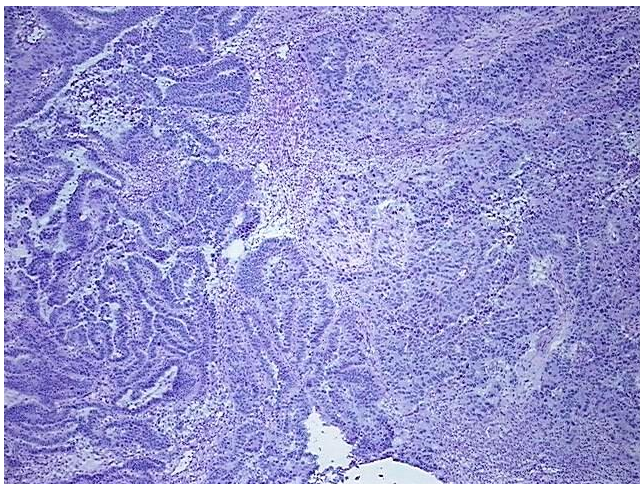
**N (Lymph node metastasis):** N1

**M (Distant metastasis):** MX

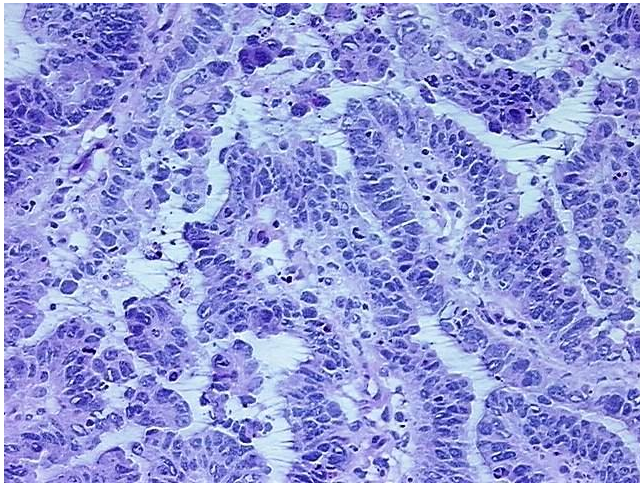
**Storage:** Store tissue total RNA at -80°C.

**Stability:** These products are stable for one year from date of shipping when stored at -80°C without repeated freeze/thaws.

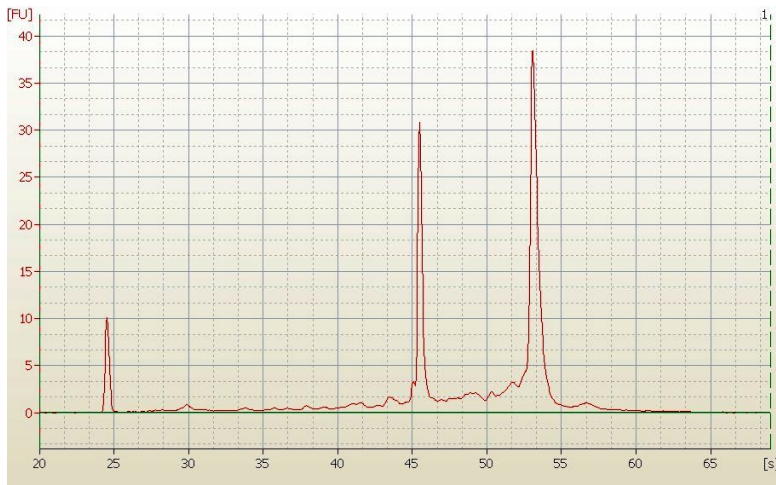
### Product images:



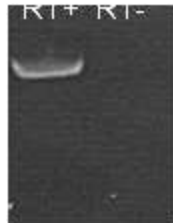
4x Image



20x Image



RNA Electropherogram Image



RNA RT-PCR Image