

Product datasheet for CR561176

Tissue Total RNA, Cervix

Product data:

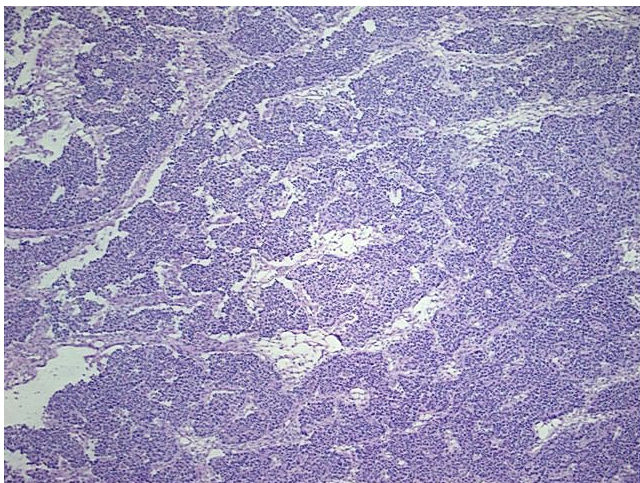
Product Type:	Total RNA
Disease State:	Cancer
Diagnosis Category:	Cervical Cancer
Tissue:	Cervix
Frozen Sample ID:	FR000069CF
Case ID:	CI0000000341
Prep:	1
Vial ID:	RN00000DBD
Tissue of Origin:	Cervix
Site of Finding:	Ovary: right
Appearance:	Tumor
Sample Diagnosis (from Pathology Verification):	Adenocarcinoma, metastatic, consistent with cervical primary
Normal:	0%
Lesional:	0%
Tumor:	85%
Tumor Hypo/Acellular Stroma:	15%
Tumor Hypercellular Stroma:	0%
Necrosis:	0%
Pathology Verification notes from H&E review:	Cervical tumor metastasized to ovary
Bioanalyzer Ratio (28S/18S):	1.79



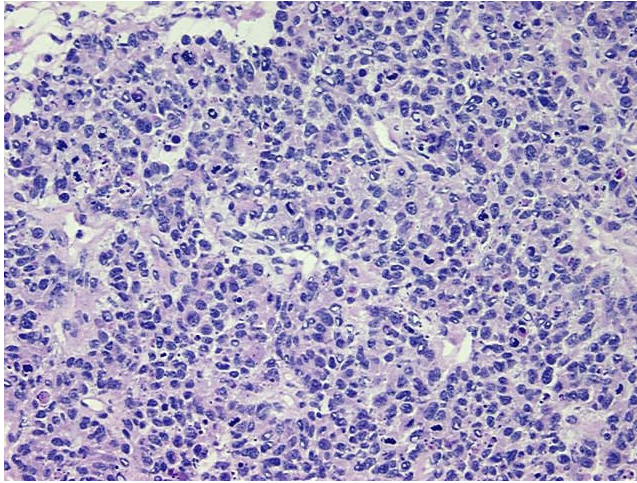
[View online »](#)

CASE Diagnosis (from medical center path report):	Carcinoma of cervix, adenosquamous, metastatic
Age:	34
Gender:	Female
Race:	White or Caucasian
Tumor Grade:	FIGO G3: Poorly differentiated
Minimum Stage Grouping:	IV
T (Extent of Primary Tumor):	T1b
N (Lymph node metastasis):	NX
M (Distant metastasis):	M1
Storage:	Store tissue total RNA at -80°C.
Stability:	These products are stable for one year from date of shipping when stored at -80°C without repeated freeze/thaws.

Product images:



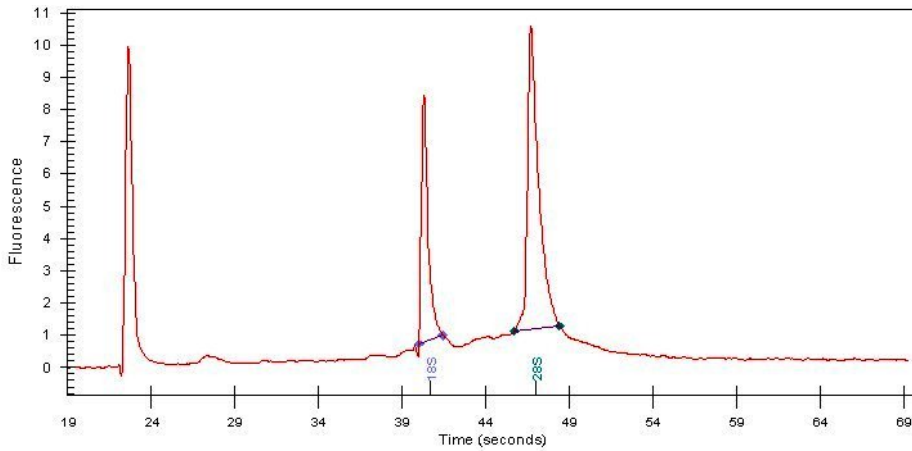
4x Image



20x Image



RNA Gel Image



RNA Electropherogram Image



RNA RT-PCR Image