

Product datasheet for CR561161

Tissue Total RNA, Breast

Product data:

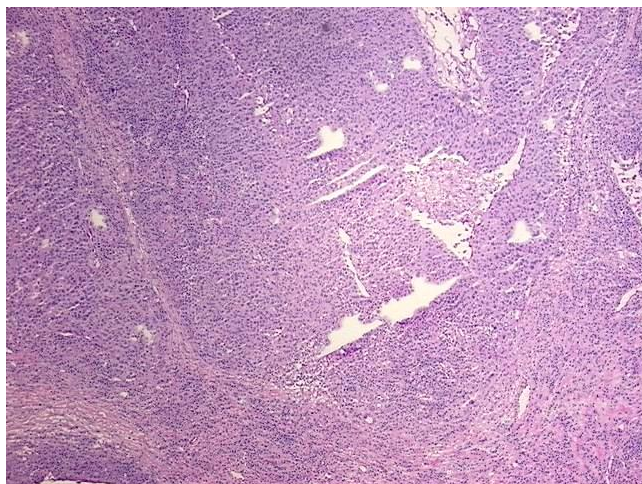
Product Type:	Total RNA
Disease State:	Cancer
Diagnosis Category:	Breast Cancer
Tissue:	Breast
Frozen Sample ID:	FR00024832
Case ID:	CI0000007464
Prep:	2
Vial ID:	RN00002EA5
Tissue of Origin:	Breast
Site of Finding:	Breast
Appearance:	Tumor
Sample Diagnosis (from Pathology Verification):	Adenocarcinoma of breast, ductal, medullary features
Normal:	20%
Lesional:	0%
Tumor:	62%
Tumor Hypo/Acellular Stroma:	15%
Tumor Hypercellular Stroma:	0%
Necrosis:	3%
Pathology Verification notes from H&E review:	tumor stroma: prominent lympho-plasmacytic infiltrate
Bioanalyzer Ratio (28S/18S):	1.45



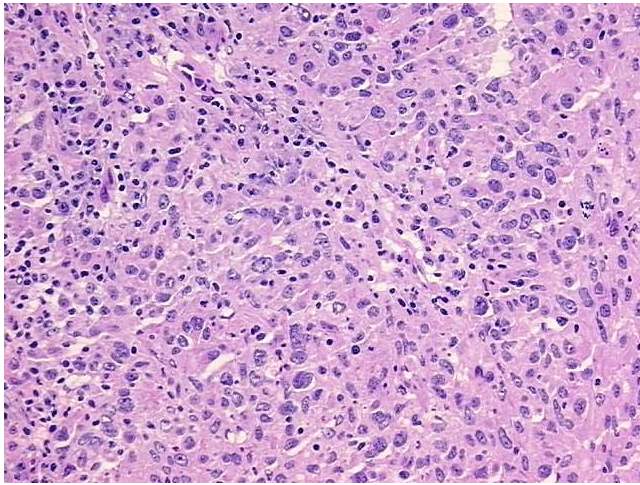
[View online »](#)

CASE Diagnosis (from medical center path report):	Adenocarcinoma of breast, ductal, medullary features
Age:	72
Gender:	Female
Race:	White or Caucasian
Tumor Grade:	Nottingham G3: 8-9 points High combined grade (unfavorable)
Minimum Stage Grouping:	I
T (Extent of Primary Tumor):	T1c
N (Lymph node metastasis):	N0 (i-)
M (Distant metastasis):	MX
Diagnostic Test Results:	Progesterone receptor ~ PR ! by IHC,Negative; Estrogen receptor ~ ER ! by IHC,Negative; HER2 ~ ERBB2 ~ Neu ! by IHC,Negative; Cytokeratin AE1/AE3 ~ AE1/AE3 ! by IHC,Negative
Storage:	Store tissue total RNA at -80°C.
Stability:	These products are stable for one year from date of shipping when stored at -80°C without repeated freeze/thaws.

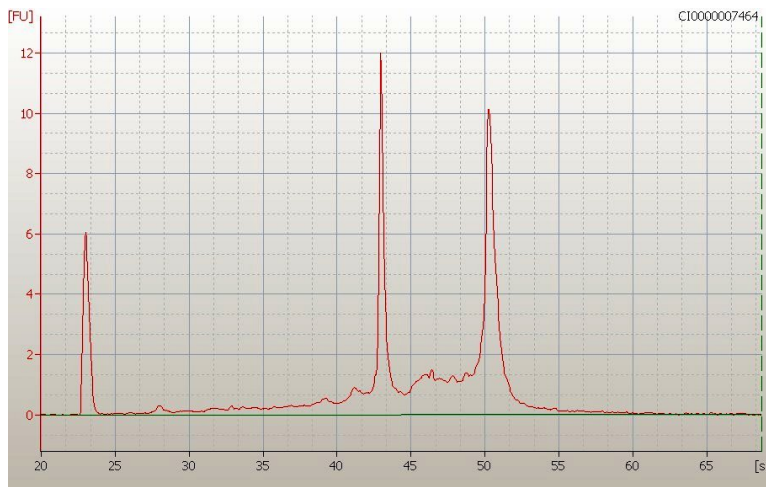
Product images:



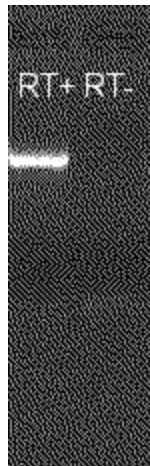
4x Image



20x Image



RNA Electropherogram Image



RNA RT-PCR Image