

Product datasheet for CR561134

Tissue Total RNA, Lung: right lower lobe

Product data:

Product Type:	Total RNA
Disease State:	Cancer
Diagnosis Category:	Lung Cancer
Tissue:	Lung
Frozen Sample ID:	FR00005981
Case ID:	CI0000000231
Prep:	3
Vial ID:	RN00000FBF
Tissue of Origin:	Lung: right lower lobe
Site of Finding:	Lung: right lower lobe
Appearance:	Tumor
Sample Diagnosis (from Pathology Verification):	Adenocarcinoma of lung, papillary
Normal:	0%
Lesional:	0%
Tumor:	80%
Tumor Hypo/Acellular Stroma:	0%
Tumor Hypercellular Stroma:	20%
Necrosis:	0%
Pathology Verification notes from H&E review:	contains focal chronic inflammatory infiltrate
Bioanalyzer Ratio (28S/18S):	1.26



[View online »](#)

CASE Diagnosis (from medical center path report): Adenocarcinoma of lung

Age: 69

Gender: Female

Race: White or Caucasian

Tumor Grade: AJCC G2: Moderately differentiated

Minimum Stage Grouping: IIIB

T (Extent of Primary Tumor): T4

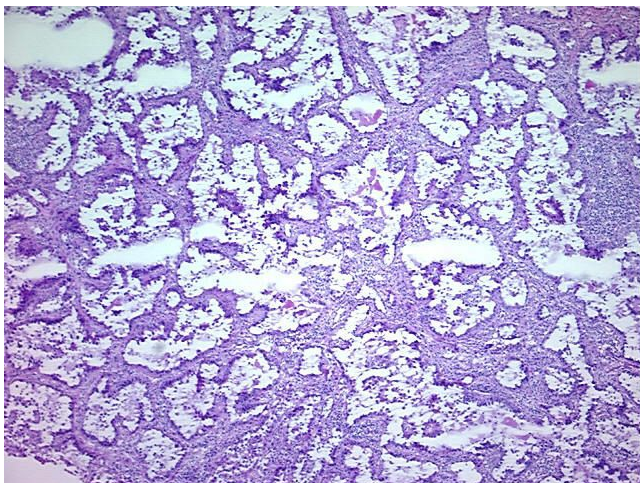
N (Lymph node metastasis): N0

M (Distant metastasis): M0

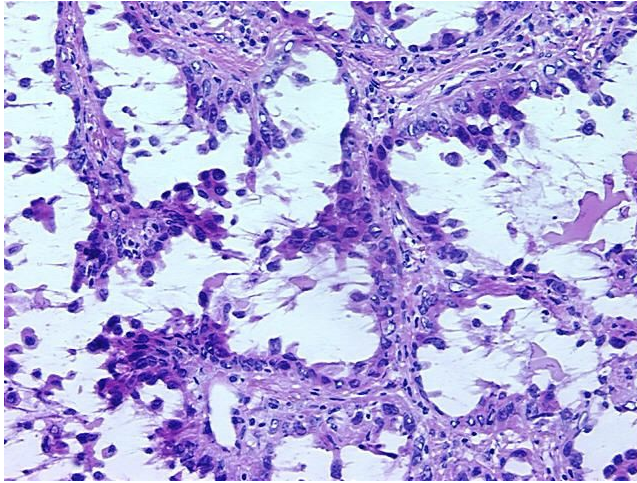
Storage: Store tissue total RNA at -80°C.

Stability: These products are stable for one year from date of shipping when stored at -80°C without repeated freeze/thaws.

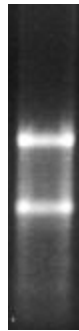
Product images:



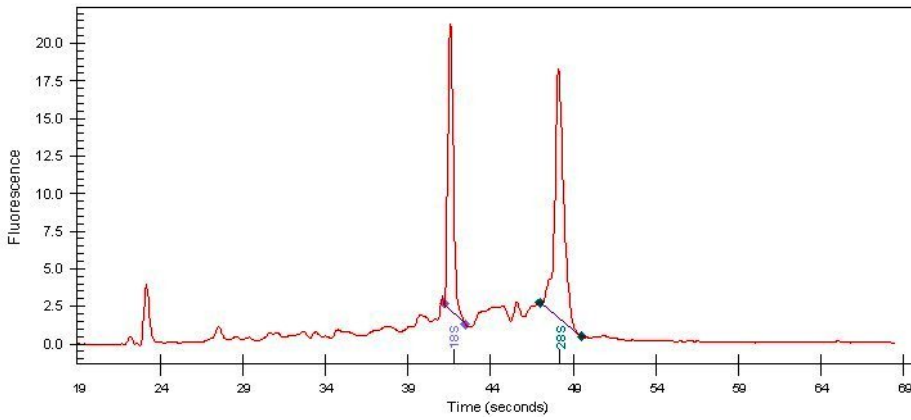
4x Image



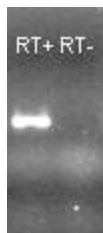
20x Image



RNA Gel Image



RNA Electropherogram Image



RNA RT-PCR Image