

## Product datasheet for CR561077

### Tissue Total RNA, Lung

#### Product data:

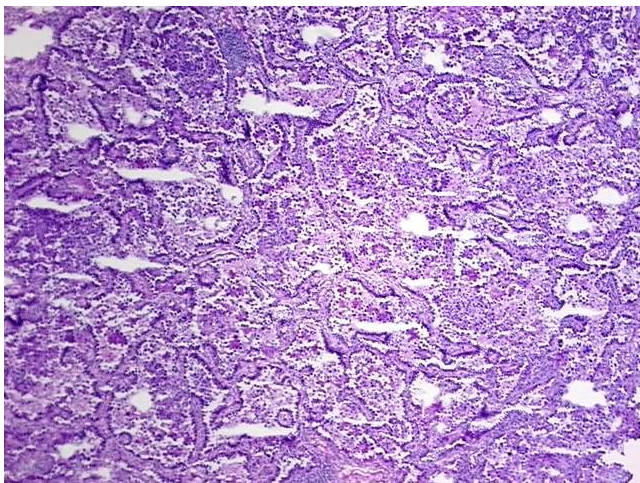
Product Type:	Total RNA
Disease State:	Cancer
Diagnosis Category:	Lung Cancer
Tissue:	Lung
Frozen Sample ID:	FR0002BEA4
Case ID:	CI0000009149
Prep:	1
Vial ID:	RN000020A0
Tissue of Origin:	Lung
Site of Finding:	Lung
Appearance:	Tumor
Sample Diagnosis (from Pathology Verification):	Adenocarcinoma of lung, papillary
Normal:	0%
Lesional:	0%
Tumor:	85%
Tumor Hypo/Acellular Stroma:	15%
Tumor Hypercellular Stroma:	0%
Necrosis:	0%
Pathology Verification notes from H&E review:	Tumor Stroma (Cellular): Desmoplastic reaction, Inflammatory cells; Inflammation: Mild Mixed inflammatory infiltrate
Bioanalyzer Ratio (28S/18S):	1.2



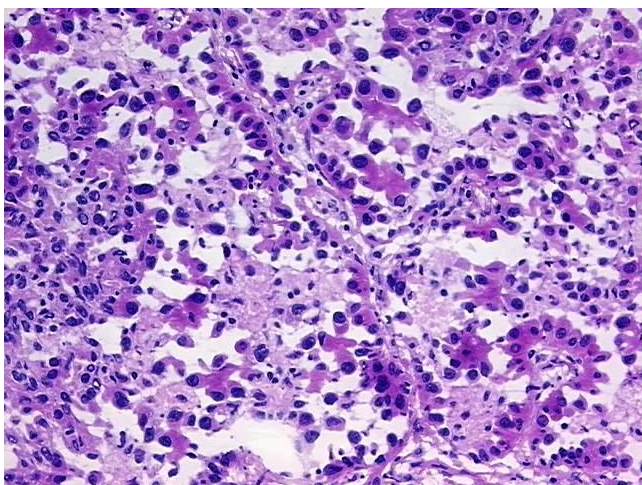
[View online »](#)

<b>CASE Diagnosis (from medical center path report):</b>	Adenocarcinoma of lung, papillary
<b>Age:</b>	73
<b>Gender:</b>	Female
<b>Tumor Grade:</b>	AJCC G1: Well differentiated
<b>Minimum Stage Grouping:</b>	IA
<b>T (Extent of Primary Tumor):</b>	T1
<b>N (Lymph node metastasis):</b>	N0
<b>M (Distant metastasis):</b>	MX
<b>Diagnostic Test Results:</b>	Thyroglobulin ~ TGB ~ THYRO,Negative
<b>Storage:</b>	Store tissue total RNA at -80°C.
<b>Stability:</b>	These products are stable for one year from date of shipping when stored at -80°C without repeated freeze/thaws.

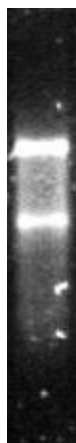
### Product images:



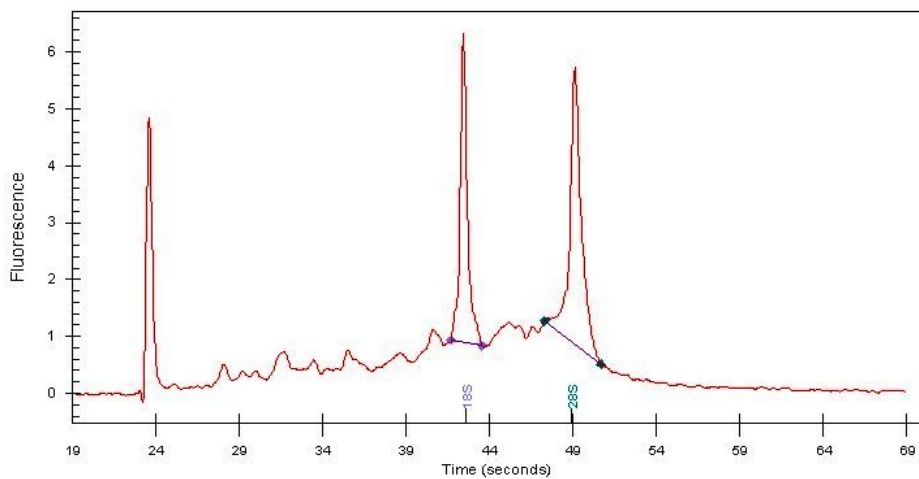
4x Image



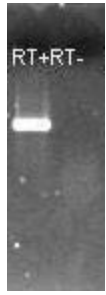
20x Image



RNA Gel Image



RNA Electropherogram Image



RNA RT-PCR Image