

## Product datasheet for CR561059

### Tissue Total RNA, Endometrium

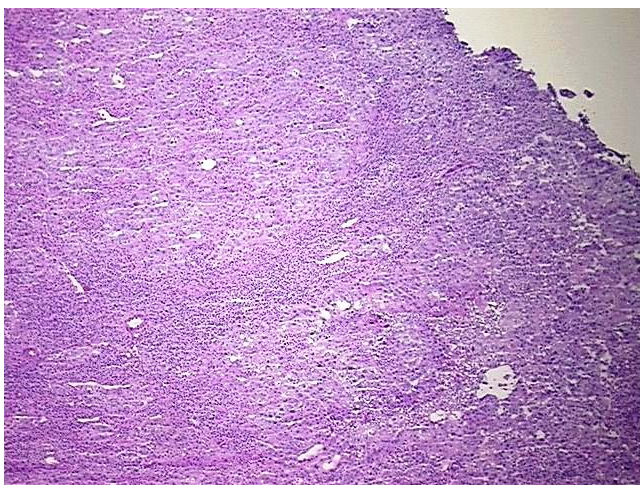
#### Product data:

Product Type:	Total RNA
Disease State:	Cancer
Diagnosis Category:	Endometrial Cancer
Tissue:	Endometrium
Frozen Sample ID:	FR5B33EAD5
Case ID:	CI0000008880
Prep:	1
Vial ID:	RN00003135
Tissue of Origin:	Endometrium
Site of Finding:	Lymph node
Appearance:	Tumor
Sample Diagnosis (from Pathology Verification):	Carcinoma of endometrium, metastatic
Normal:	5%
Lesional:	0%
Tumor:	75%
Tumor Hypo/Acellular Stroma:	20%
Tumor Hypercellular Stroma:	0%
Necrosis:	0%
Bioanalyzer Ratio (28S/18S):	1.23
CASE Diagnosis (from medical center path report):	Carcinoma of endometrium, papillary serous
Age:	68

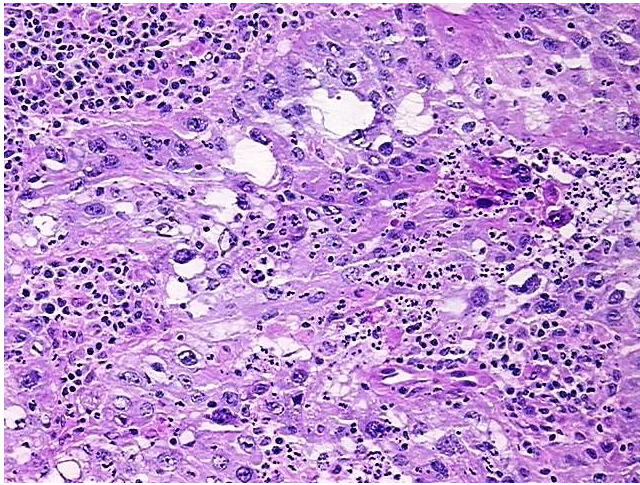


[View online »](#)

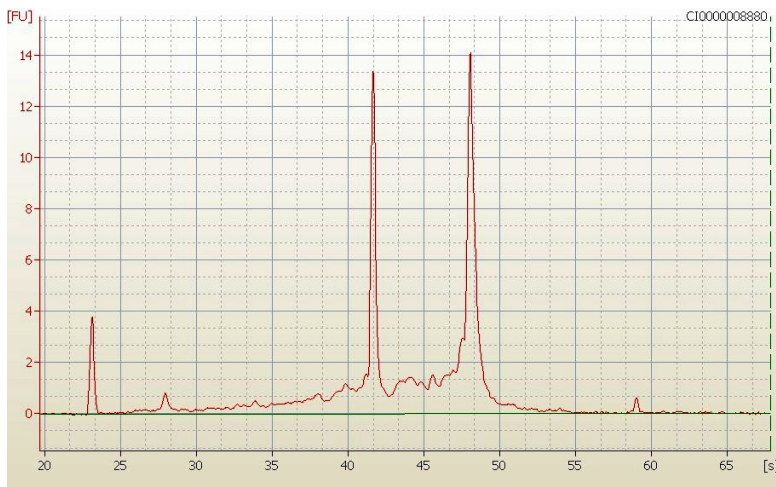
Gender:	Female
Tumor Grade:	FIGO G3: Poorly differentiated
Minimum Stage Grouping:	IIIC
T (Extent of Primary Tumor):	T1c
N (Lymph node metastasis):	N1
M (Distant metastasis):	MX
Storage:	Store tissue total RNA at -80°C.
Stability:	These products are stable for one year from date of shipping when stored at -80°C without repeated freeze/thaws.

**Product images:**

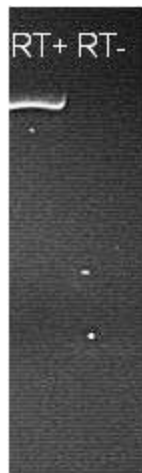
4x Image



20x Image



RNA Electropherogram Image



RNA RT-PCR Image