

## Product datasheet for CR561051

### Tissue Total RNA, Lung

#### Product data:

Product Type:	Total RNA
Disease State:	Cancer
Diagnosis Category:	Lung Cancer
Tissue:	Lung
Frozen Sample ID:	FR000270F1
Case ID:	CI0000008283
Prep:	1
Vial ID:	RN0000166D
Tissue of Origin:	Lung
Site of Finding:	Lung
Appearance:	Tumor
Sample Diagnosis (from Pathology Verification):	Adenocarcinoma of lung
Normal:	0%
Lesional:	0%
Tumor:	80%
Tumor Hypo/Acellular Stroma:	20%
Tumor Hypercellular Stroma:	0%
Necrosis:	0%
Pathology Verification notes from H&E review:	hypercellular stroma: dense lymphoplasmacytic infiltrate
Bioanalyzer Ratio (28S/18S):	1.22



[View online »](#)

CASE Diagnosis (from medical center path report): Adenocarcinoma of lung

Age: 75

Gender: Female

Race: White or Caucasian

Tumor Grade: Not Reported

Minimum Stage Grouping: IIB

T (Extent of Primary Tumor): T2

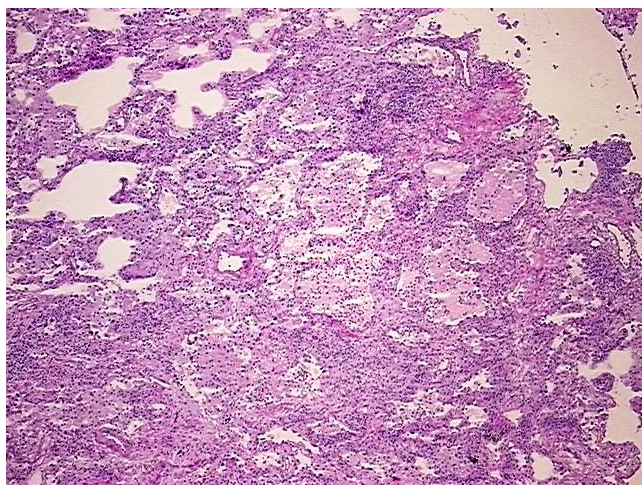
N (Lymph node metastasis): N1

M (Distant metastasis): MX

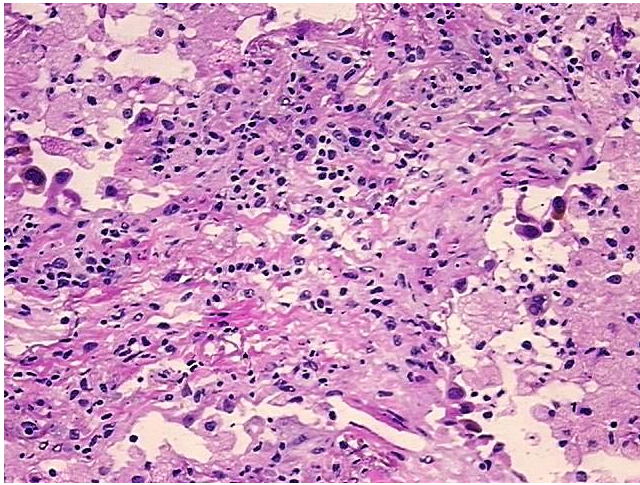
Storage: Store tissue total RNA at -80°C.

Stability: These products are stable for one year from date of shipping when stored at -80°C without repeated freeze/thaws.

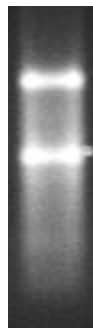
### Product images:



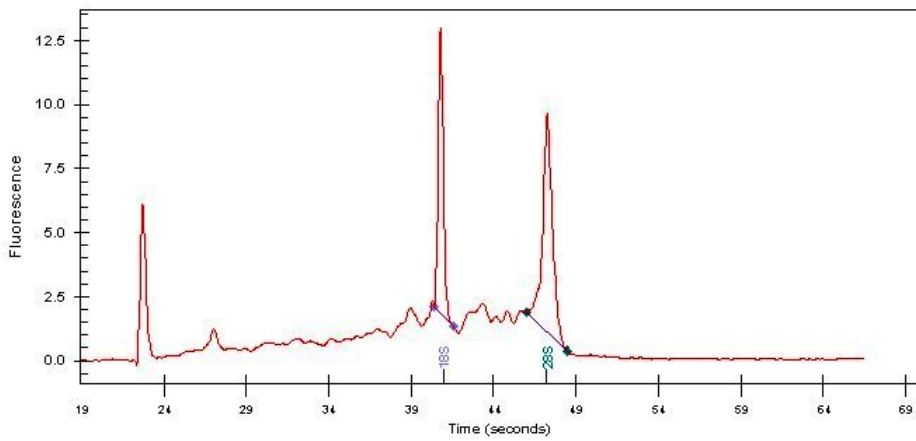
4x Image



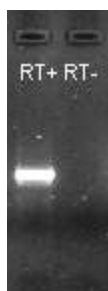
20x Image



RNA Gel Image



RNA Electropherogram Image



RNA RT-PCR Image