

Product datasheet for CR561027

Tissue Total RNA, Breast

Product data:

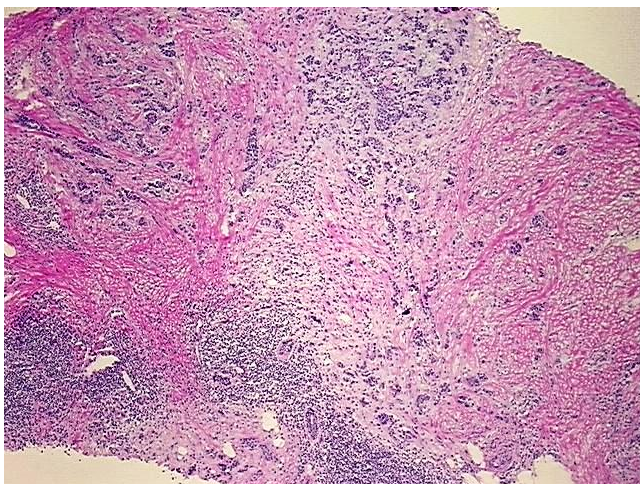
Product Type:	Total RNA
Disease State:	Cancer
Diagnosis Category:	Breast Cancer
Tissue:	Breast
Frozen Sample ID:	FR5B33B211
Case ID:	CI0000008198
Prep:	2
Vial ID:	RN0000150F
Tissue of Origin:	Breast
Site of Finding:	Breast
Appearance:	Tumor
Sample Diagnosis (from Pathology Verification):	Adenocarcinoma of breast, ductal
Normal:	10%
Lesional:	0%
Tumor:	50%
Tumor Hypo/Acellular Stroma:	20%
Tumor Hypercellular Stroma:	20%
Necrosis:	0%
Pathology Verification notes from H&E review:	Tumor: with prominent lobular features; Other Features/Comments: tumor: 50% invasive ductal carcinoma, 50% ductal carcinoma in situ (DCIS); fibrotic stroma contains lymphocytic infiltrate
Bioanalyzer Ratio (28S/18S):	1.25



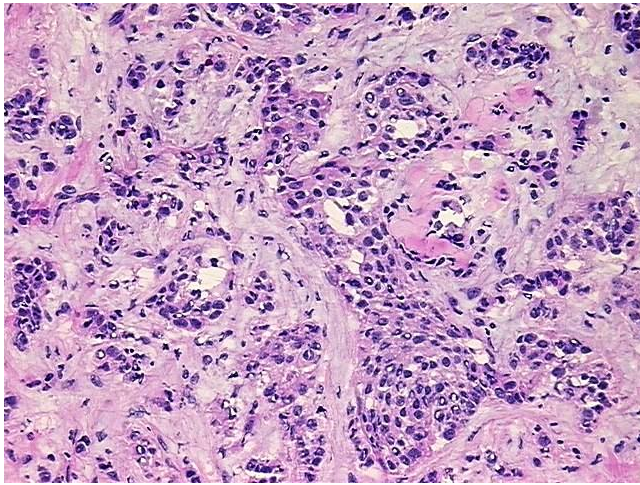
[View online »](#)

CASE Diagnosis (from medical center path report):	Adenocarcinoma of breast, ductal, lobular
Age:	54
Gender:	Female
Race:	White or Caucasian
Tumor Grade:	NSABP Grade: Nuclear 2 of 3 & Histologic 2 of 3
Minimum Stage Grouping:	IIIA
T (Extent of Primary Tumor):	T1c
N (Lymph node metastasis):	N2
M (Distant metastasis):	MX
Diagnostic Test Results:	Progesterone receptor ~ PR ! by IHC,Positive; Estrogen receptor ~ ER ! by IHC,Positive; HER2 ~ ERBB2 ~ Neu ! by IHC,Positive, strong
Storage:	Store tissue total RNA at -80°C.
Stability:	These products are stable for one year from date of shipping when stored at -80°C without repeated freeze/thaws.

Product images:



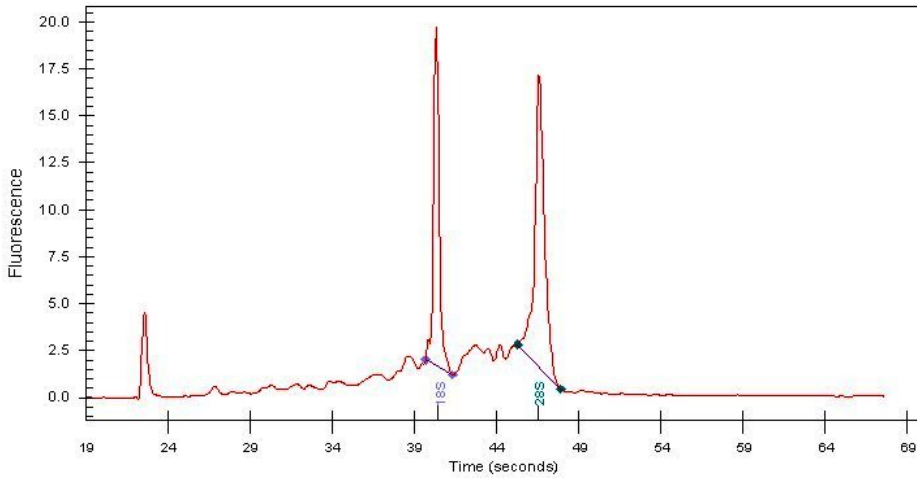
4x Image



20x Image



RNA Gel Image



RNA Electropherogram Image



RNA RT-PCR Image