

## Product datasheet for **CR561026**

### Tissue Total RNA, Soft tissue

#### Product data:

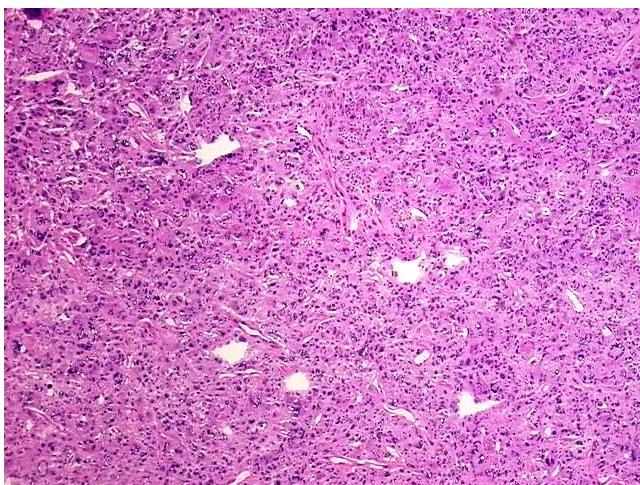
Product Type:	Total RNA
Disease State:	Cancer
Diagnosis Category:	Sarcoma
Tissue:	Soft tissue
Frozen Sample ID:	FR000271F5
Case ID:	CI0000008204
Prep:	3
Vial ID:	RN00003C6B
Tissue of Origin:	Soft tissue
Site of Finding:	Chest wall
Appearance:	Tumor
Sample Diagnosis (from Pathology Verification):	Histiocytoma, malignant fibrous
Normal:	0%
Lesional:	0%
Tumor:	95%
Tumor Hypo/Acellular Stroma:	2%
Tumor Hypercellular Stroma:	0%
Necrosis:	3%
Pathology Verification notes from H&E review:	Pathology report states that an extensive immunohistochemical work-up was performed and that a malignant fibrohistiocytoma is favored
Bioanalyzer Ratio (28S/18S):	1.6



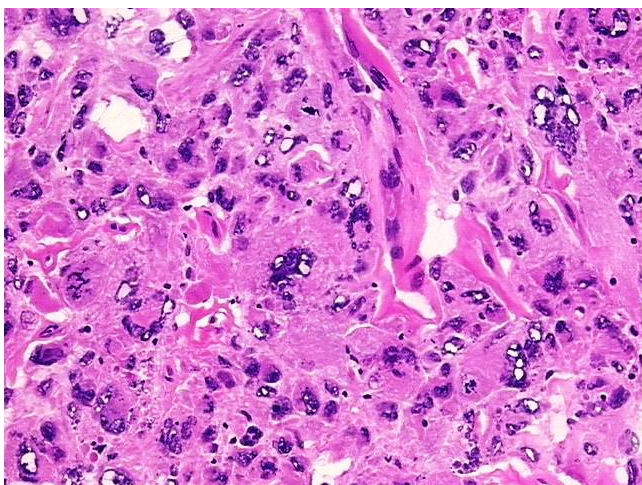
[View online »](#)

<b>CASE Diagnosis (from medical center path report):</b>	Histiocytoma, malignant fibrous
<b>Age:</b>	72
<b>Gender:</b>	Female
<b>Race:</b>	White or Caucasian
<b>Tumor Grade:</b>	AJCC G3-4: Poorly differentiated or undifferentiated
<b>Minimum Stage Grouping:</b>	III
<b>T (Extent of Primary Tumor):</b>	T2b
<b>N (Lymph node metastasis):</b>	NX
<b>M (Distant metastasis):</b>	MX
<b>Diagnostic Test Results:</b>	CD227 ~ MUC1 ~ EMA ~ CA15-3 ! by IHC,Negative; Cytokeratin (Pan) ~ Keratin, Pan ! by IHC,Negative; Vimentin ~ VIM ! by IHC,Positive; S100 protein,Negative; HMB45 melanoma antigen ~ GP100 ! by IHC,Negative; Cytokeratin 7 ~ CK7 ! by IHC,Negati
<b>Storage:</b>	Store tissue total RNA at -80°C.
<b>Stability:</b>	These products are stable for one year from date of shipping when stored at -80°C without repeated freeze/thaws.

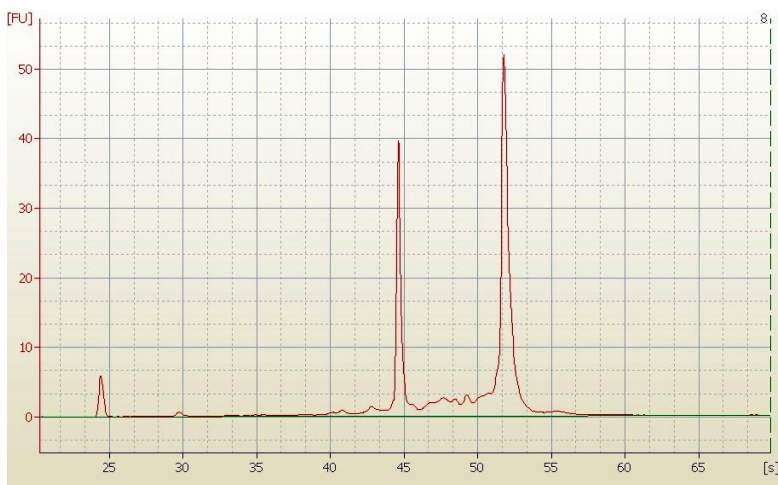
### Product images:



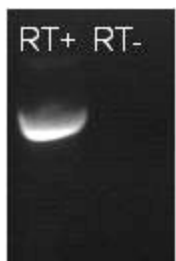
4x Image



20x Image



RNA Electropherogram Image



RNA RT-PCR Image