

Product datasheet for CR561012

Tissue Total RNA, Renal pelvis

Product data:

Product Type:	Total RNA
Disease State:	Cancer
Diagnosis Category:	Renal Pelvis Cancer
Tissue:	Renal pelvis
Frozen Sample ID:	FR5B33B235
Case ID:	CI0000008274
Prep:	1
Vial ID:	RN0000155D
Tissue of Origin:	Renal pelvis
Site of Finding:	Renal pelvis
Appearance:	Tumor
Sample Diagnosis (from Pathology Verification):	Carcinoma of renal pelvis, transitional cell
Normal:	0%
Lesional:	0%
Tumor:	90%
Tumor Hypo/Acellular Stroma:	5%
Tumor Hypercellular Stroma:	0%
Necrosis:	5%
Pathology Verification notes from H&E review:	tumor stroma: 60% lymphocytes, 40% desmoplasia
Bioanalyzer Ratio (28S/18S):	1.21



[View online »](#)

CASE Diagnosis (from medical center path report): Carcinoma of renal pelvis, transitional cell

Age: 53

Gender: Male

Race: White or Caucasian

Tumor Grade: AJCC G3: Poorly differentiated

Minimum Stage Grouping: III

T (Extent of Primary Tumor): T3

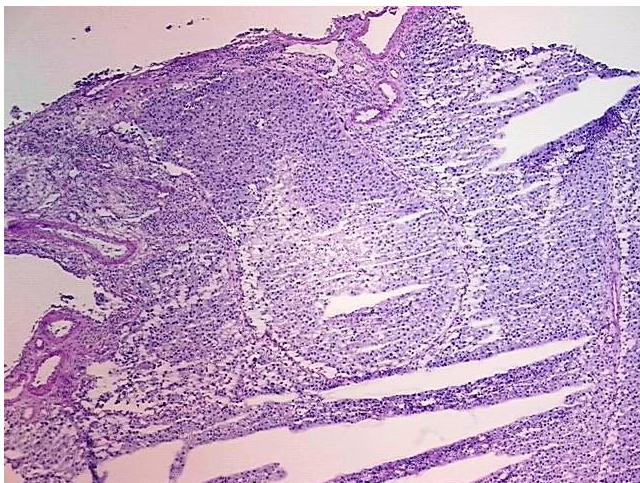
N (Lymph node metastasis): N0

M (Distant metastasis): MX

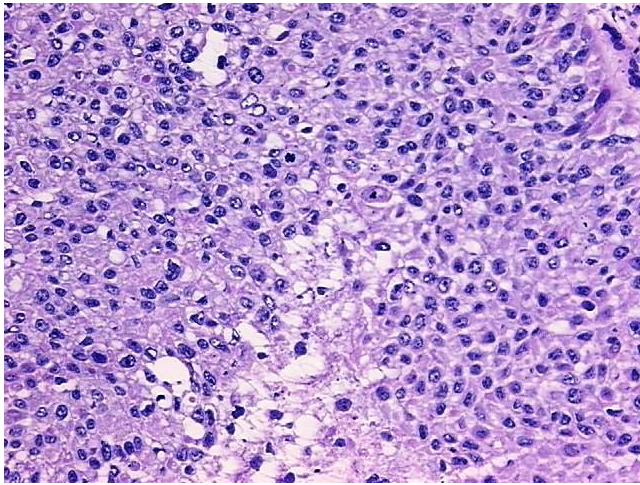
Storage: Store tissue total RNA at -80°C.

Stability: These products are stable for one year from date of shipping when stored at -80°C without repeated freeze/thaws.

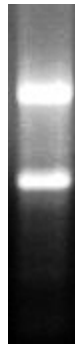
Product images:



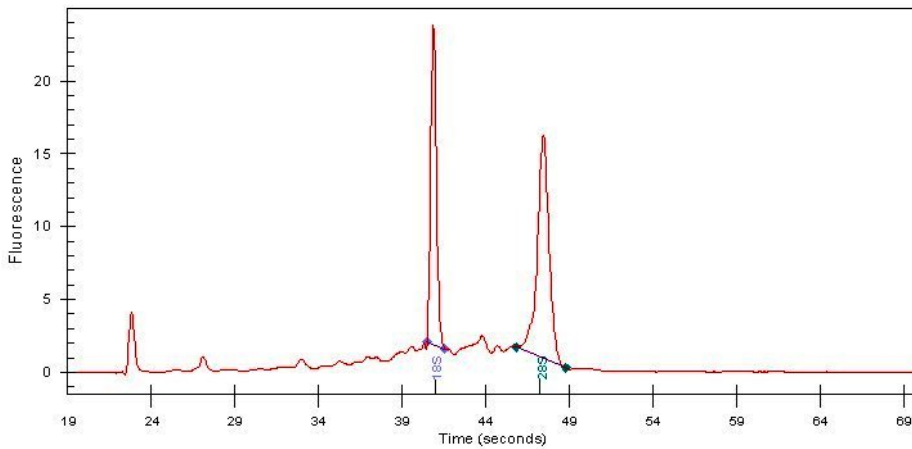
4x Image



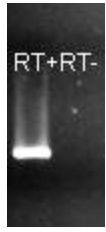
20x Image



RNA Gel Image



RNA Electropherogram Image



RNA RT-PCR Image