

Product datasheet for CR561010

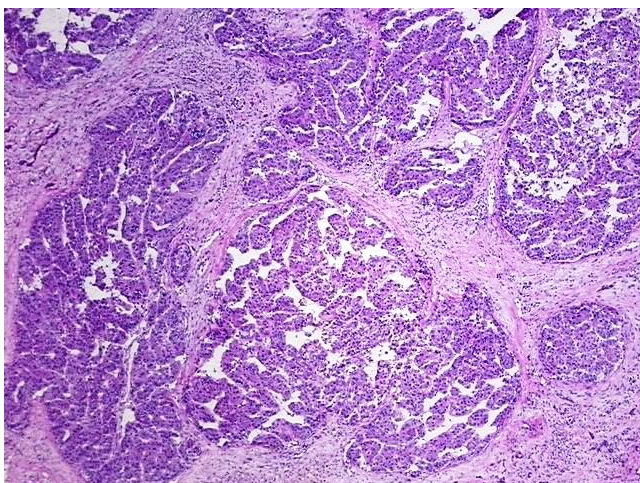
Tissue Total RNA, Liver

Product data:

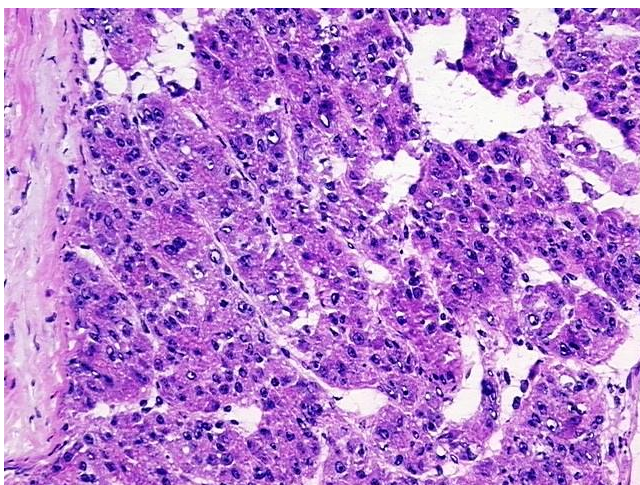
Product Type:	Total RNA
Disease State:	Cancer
Diagnosis Category:	Liver Cancer
Tissue:	Liver
Frozen Sample ID:	FR00027183
Case ID:	CI0000008275
Prep:	1
Vial ID:	RN00000F45
Tissue of Origin:	Liver
Site of Finding:	Liver
Appearance:	Tumor
Sample Diagnosis (from Pathology Verification):	Carcinoma of liver, hepatocellular
Normal:	0%
Lesional:	0%
Tumor:	35%
Tumor Hypo/Acellular Stroma:	60%
Tumor Hypercellular Stroma:	0%
Necrosis:	5%
Bioanalyzer Ratio (28S/18S):	1.29
CASE Diagnosis (from medical center path report):	Carcinoma of liver, hepatocellular
Age:	43


[View online »](#)

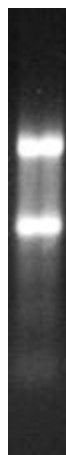
Gender:	Male
Race:	White or Caucasian
Tumor Grade:	AJCC G3: Poorly differentiated
Minimum Stage Grouping:	IIIA
T (Extent of Primary Tumor):	T3
N (Lymph node metastasis):	N0
M (Distant metastasis):	MX
Storage:	Store tissue total RNA at -80°C.
Stability:	These products are stable for one year from date of shipping when stored at -80°C without repeated freeze/thaws.

Product images:


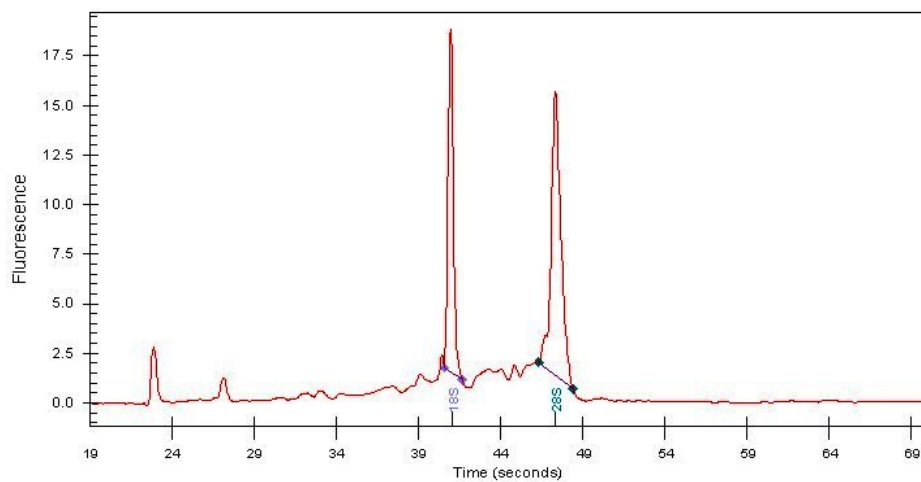
4x Image



20x Image



RNA Gel Image



RNA Electropherogram Image



RNA RT-PCR Image