

Product datasheet for CR560998

Tissue Total RNA, Pleura

Product data:

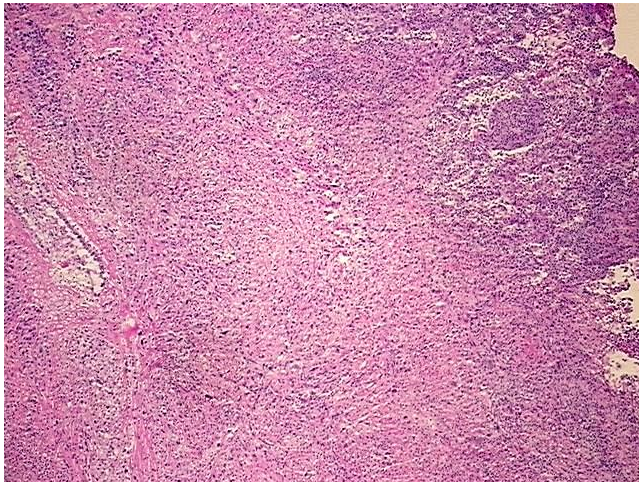
Product Type:	Total RNA
Disease State:	Cancer
Diagnosis Category:	Mesothelioma
Tissue:	Pleura
Frozen Sample ID:	FR0002659F
Case ID:	CI0000008573
Prep:	1
Vial ID:	RN00001F0C
Tissue of Origin:	Pleura
Site of Finding:	Pleura
Appearance:	Tumor
Sample Diagnosis (from Pathology Verification):	Mesothelioma of pleura, mixed
Normal:	0%
Lesional:	0%
Tumor:	60%
Tumor Hypo/Acellular Stroma:	5%
Tumor Hypercellular Stroma:	35%
Necrosis:	0%
Pathology Verification notes from H&E review:	Tumor Stroma (Cellular): Desmoplastic reaction; Tumor Stroma (Hypo/Acellular): Fibrosis, Myxoid
Bioanalyzer Ratio (28S/18S):	1.3



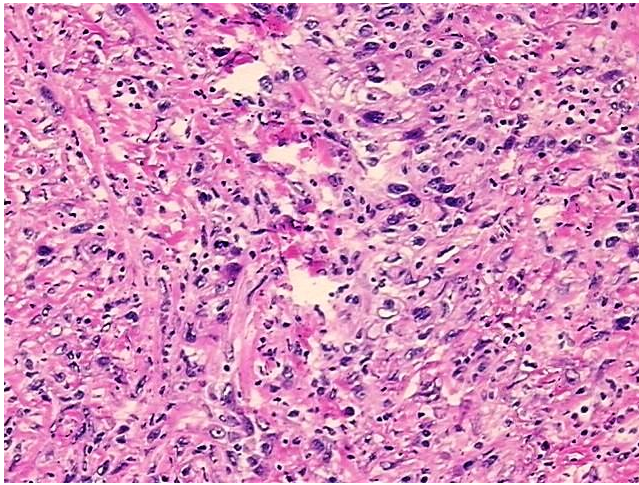
[View online »](#)

CASE Diagnosis (from medical center path report):	Mesothelioma of pleura, mixed
Age:	71
Gender:	Male
Race:	White or Caucasian
Tumor Grade:	Not Reported
Minimum Stage Grouping:	IV
T (Extent of Primary Tumor):	T4
N (Lymph node metastasis):	NX
M (Distant metastasis):	MX
Diagnostic Test Results:	Cytokeratin (Pan) ~ Keratin, Pan ! by IHC,Positive; Epithelial specific antigen ~ BerEP4 ~ MOC31 ! by IHC,Positive, focal; CD66e ~ CEACAM5 ! by IHC,Positive, focal; CD15 ~ Lewis X ~ Leu M1 ! by IHC,Negative; Calretinin,Positive; Thyroid transc
Storage:	Store tissue total RNA at -80°C.
Stability:	These products are stable for one year from date of shipping when stored at -80°C without repeated freeze/thaws.

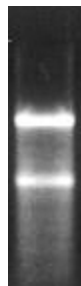
Product images:



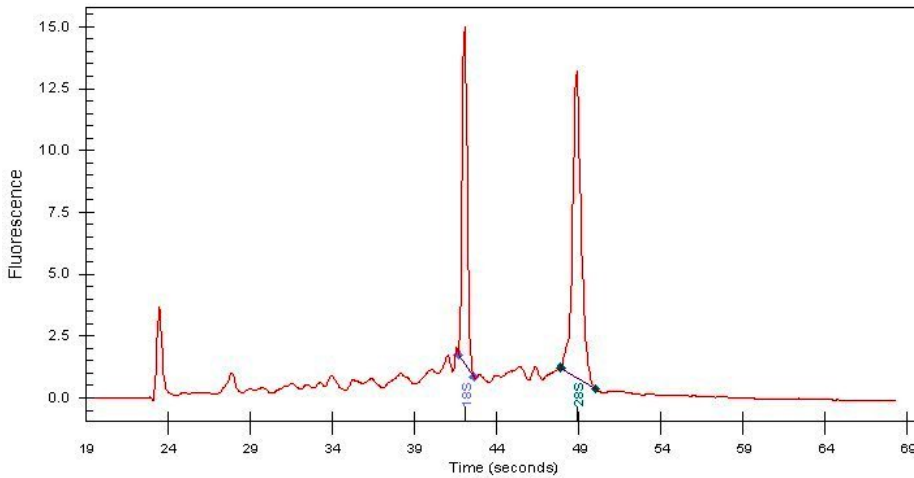
4x Image



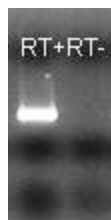
20x Image



RNA Gel Image



RNA Electropherogram Image



RNA RT-PCR Image