

## Product datasheet for CR560825

### Tissue Total RNA, Lung

#### Product data:

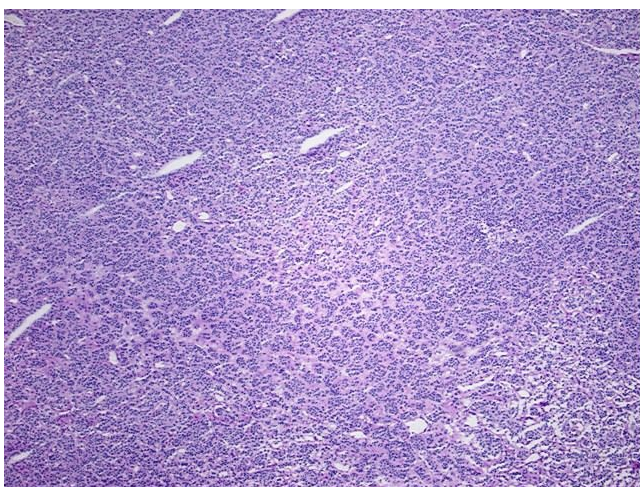
Product Type:	Total RNA
Disease State:	Cancer
Diagnosis Category:	Carcinoid/Neuroendocrine Tumors
Tissue:	Lung
Frozen Sample ID:	FR00018F3E
Case ID:	CI0000005508
Prep:	3
Vial ID:	RN00001658
Tissue of Origin:	Lung
Site of Finding:	Lung
Appearance:	Tumor
Sample Diagnosis (from Pathology Verification):	Tumor of lung, carcinoid, atypical
Normal:	0%
Lesional:	0%
Tumor:	90%
Tumor Hypo/Acellular Stroma:	6%
Tumor Hypercellular Stroma:	0%
Necrosis:	4%
Bioanalyzer Ratio (28S/18S):	1.37
CASE Diagnosis (from medical center path report):	Tumor of lung, carcinoid, atypical
Age:	64



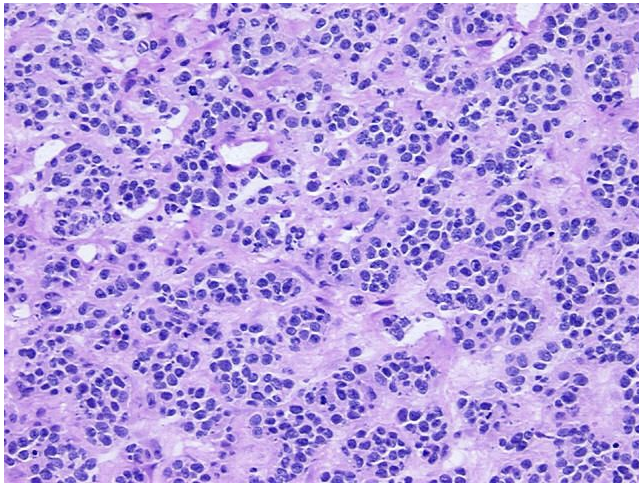
[View online »](#)

Gender:	Female
Race:	White or Caucasian
Tumor Grade:	Not Reported
Minimum Stage Grouping:	Not Reported
T (Extent of Primary Tumor):	Not Reported
N (Lymph node metastasis):	Not Reported
M (Distant metastasis):	Not Reported
Diagnostic Test Results:	Synaptophysin ~ SYN ! by IHC,Positive; Neuron specific enolase ~ NSE ! by IHC,Positive; Chromogranin A ~ Parathyroid secretory protein 1 ! by IHC,Positive; Cytokeratin AE1/AE3 ~ AE1/AE3 ! by IHC,Positive, focal
Storage:	Store tissue total RNA at -80°C.
Stability:	These products are stable for one year from date of shipping when stored at -80°C without repeated freeze/thaws.

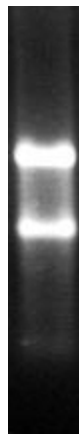
### Product images:



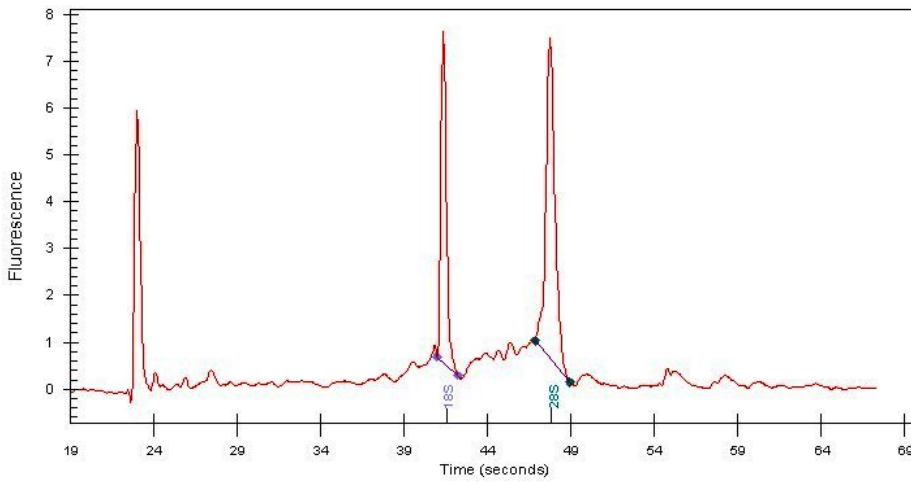
4x Image



20x Image



RNA Gel Image



RNA Electropherogram Image



RNA RT-PCR Image