

Product datasheet for CR560781

Tissue Total RNA, Pancreas

Product data:

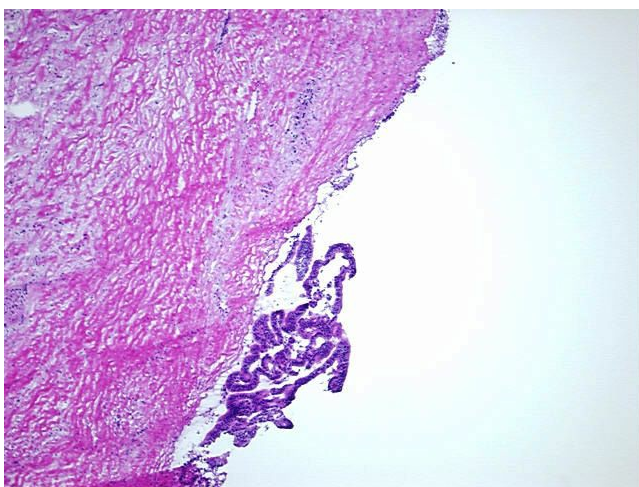
Product Type:	Total RNA
Disease State:	Cancer
Diagnosis Category:	Pancreatic Cancer
Tissue:	Pancreas
Frozen Sample ID:	FR00018772
Case ID:	CI0000005377
Prep:	4
Vial ID:	RN00002095
Tissue of Origin:	Pancreas
Site of Finding:	Pancreas
Appearance:	Tumor
Sample Diagnosis (from Pathology Verification):	Adenocarcinoma of pancreas, ductal
Normal:	15%
Lesional:	0%
Tumor:	5%
Tumor Hypo/Acellular Stroma:	75%
Tumor Hypercellular Stroma:	0%
Necrosis:	5%
Pathology Verification notes from H&E review:	small focus of detached atypical epithelium most consistent with pancreatic adenocarcinoma
Bioanalyzer Ratio (28S/18S):	1.25



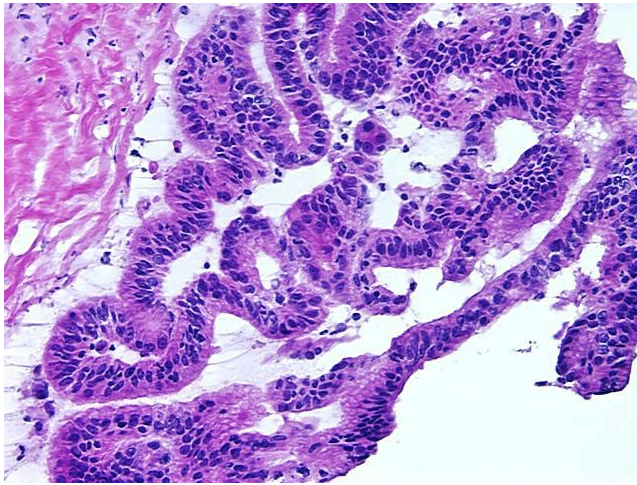
[View online »](#)

CASE Diagnosis (from medical center path report):	Adenocarcinoma of pancreas, ductal
Age:	79
Gender:	Female
Tumor Grade:	AJCC G3: Poorly differentiated
Minimum Stage Grouping:	IB
T (Extent of Primary Tumor):	T2
N (Lymph node metastasis):	N0
M (Distant metastasis):	MX
Storage:	Store tissue total RNA at -80°C.
Stability:	These products are stable for one year from date of shipping when stored at -80°C without repeated freeze/thaws.

Product images:



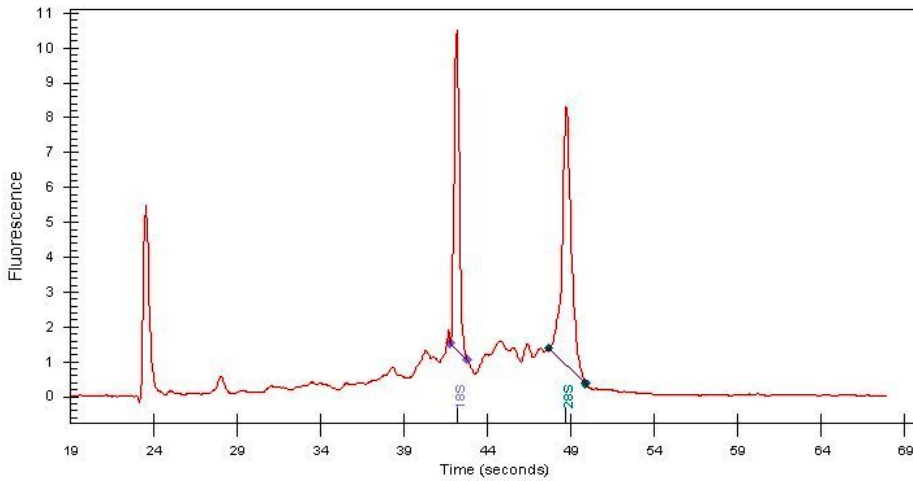
4x Image



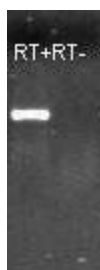
20x Image



RNA Gel Image



RNA Electropherogram Image



RNA RT-PCR Image