

Product datasheet for CR560761

Tissue Total RNA, Pancreas

Product data:

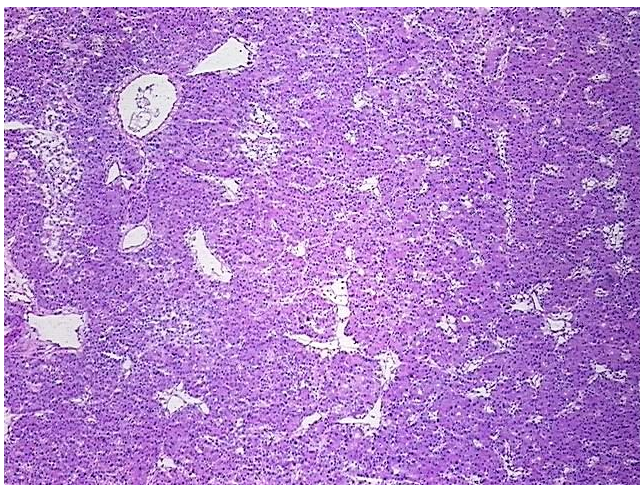
| | |
|---|-----------------------------------|
| Product Type: | Total RNA |
| Disease State: | Cancer |
| Diagnosis Category: | Carcinoid/Neuroendocrine Tumors |
| Tissue: | Pancreas |
| Frozen Sample ID: | FR0001FD38 |
| Case ID: | CI0000006998 |
| Prep: | 2 |
| Vial ID: | RN00001407 |
| Tissue of Origin: | Pancreas |
| Site of Finding: | Pancreas |
| Appearance: | Tumor |
| Sample Diagnosis (from Pathology Verification): | Tumor of pancreas, neuroendocrine |
| Normal: | 0% |
| Lesional: | 0% |
| Tumor: | 90% |
| Tumor Hypo/Acellular Stroma: | 10% |
| Tumor Hypercellular Stroma: | 0% |
| Necrosis: | 0% |
| Bioanalyzer Ratio (28S/18S): | 1.57 |
| CASE Diagnosis (from medical center path report): | Tumor of pancreas, neuroendocrine |
| Age: | 66 |



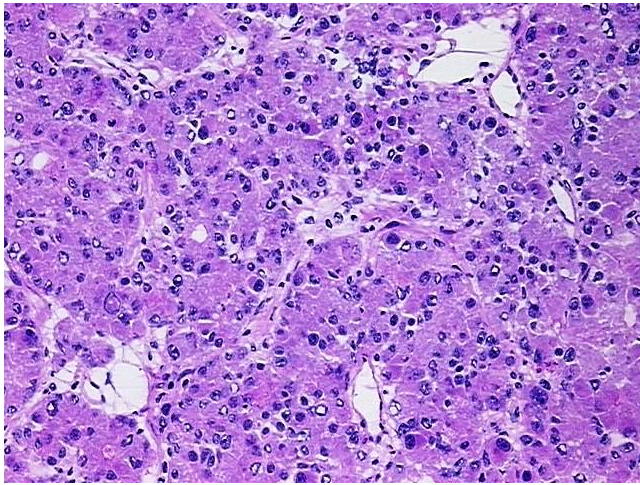
[View online »](#)

| | |
|------------------------------|---|
| Gender: | Male |
| Race: | White or Caucasian |
| Tumor Grade: | Not Reported |
| Minimum Stage Grouping: | Not Reported |
| T (Extent of Primary Tumor): | Not Reported |
| N (Lymph node metastasis): | Not Reported |
| M (Distant metastasis): | Not Reported |
| Diagnostic Test Results: | Cytokeratin (Pan) ~ Keratin, Pan ! by IHC,Positive; Synaptophysin ~ SYN ! by IHC,Positive; Vimentin ~ VIM ! by IHC,Negative; Chromogranin A ~ Parathyroid secretory protein 1 ! by IHC,Positive |
| Storage: | Store tissue total RNA at -80°C. |
| Stability: | These products are stable for one year from date of shipping when stored at -80°C without repeated freeze/thaws. |

Product images:



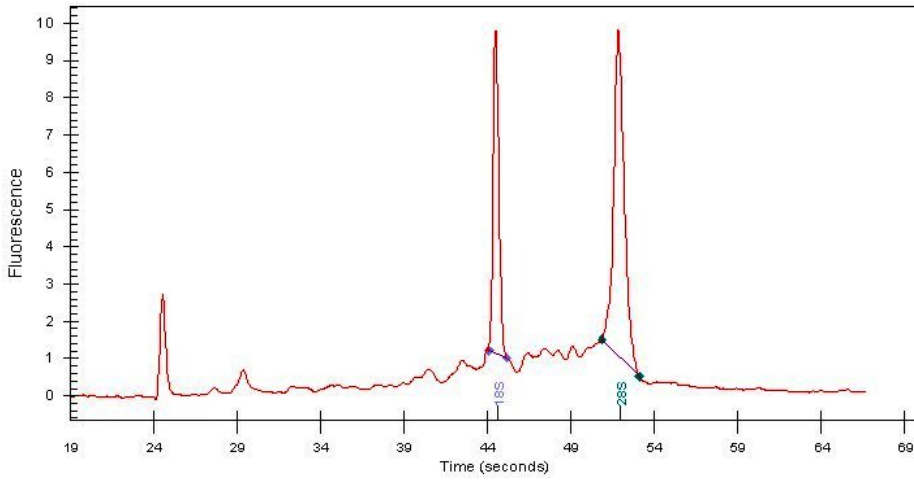
4x Image



20x Image



RNA Gel Image



RNA Electropherogram Image



RNA RT-PCR Image