

Product datasheet for CR560738

Tissue Total RNA, Lymphoid tissue

Product data:

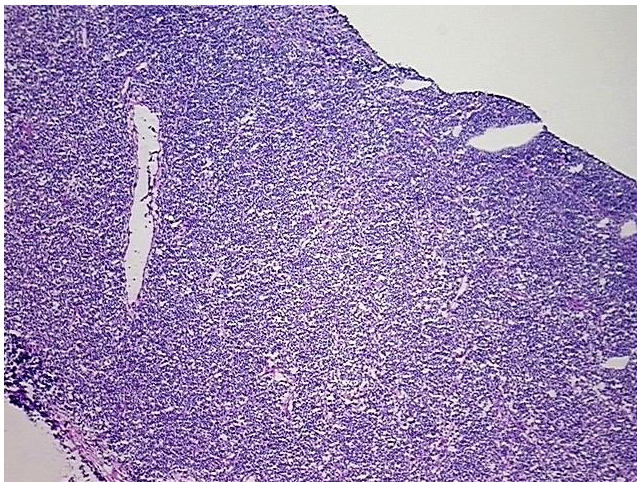
Product Type:	Total RNA
Disease State:	Cancer
Diagnosis Category:	Lymphoma
Tissue:	Lymphoid tissue
Frozen Sample ID:	FR0001D0FD
Case ID:	CI0000006834
Prep:	2
Vial ID:	RN00001102
Tissue of Origin:	Lymphoid tissue
Site of Finding:	Mesentery
Appearance:	Tumor
Sample Diagnosis (from Pathology Verification):	Lymphoma, large B-cell, diffuse
Normal:	0%
Lesional:	0%
Tumor:	80%
Tumor Hypo/Acellular Stroma:	10%
Tumor Hypercellular Stroma:	10%
Necrosis:	0%
Pathology Verification notes from H&E review:	this section represents marked direct tumor expansion from the small bowel wall (primary) to mesenteric adipose tissue; however, no residual mesentary tissue identified
Bioanalyzer Ratio (28S/18S):	1.42



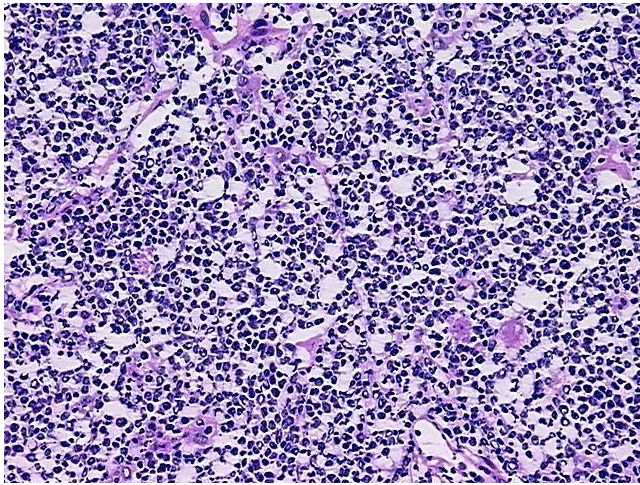
[View online »](#)

CASE Diagnosis (from medical center path report):	Lymphoma, large B-cell, diffuse
Age:	54
Gender:	Male
Race:	White or Caucasian
Tumor Grade:	Not Reported
Minimum Stage Grouping:	IIB
T (Extent of Primary Tumor):	Not applicable
N (Lymph node metastasis):	Not applicable
M (Distant metastasis):	Not applicable
Diagnostic Test Results:	CD3 ~ Leu4 ~ UCHT1 ! by FC,Negative; CD19 ~ B4 ~ Leu12 ! by IHC,Negative; CD22 ~ Leu14 ! by IHC,Positive; Kappa light chain ! by IHC,Positive; BCL2 oncoprotein ! by IHC,Positive; CD5 ~ Leu1 ! by IHC,Negative; CD10 ~ CALLA ~ Common ALL anti
Storage:	Store tissue total RNA at -80°C.
Stability:	These products are stable for one year from date of shipping when stored at -80°C without repeated freeze/thaws.

Product images:



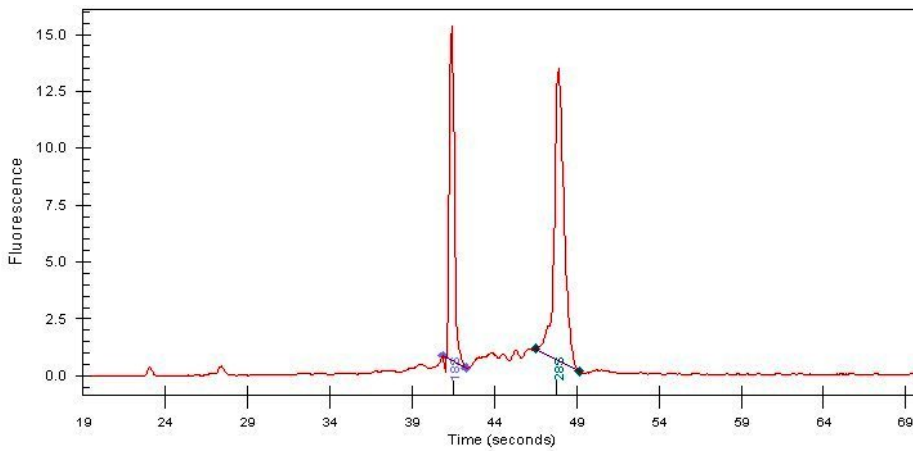
4x Image



20x Image



RNA Gel Image



RNA Electropherogram Image



RNA RT-PCR Image