

## Product datasheet for CR560722

### Tissue Total RNA, Endometrium

#### Product data:

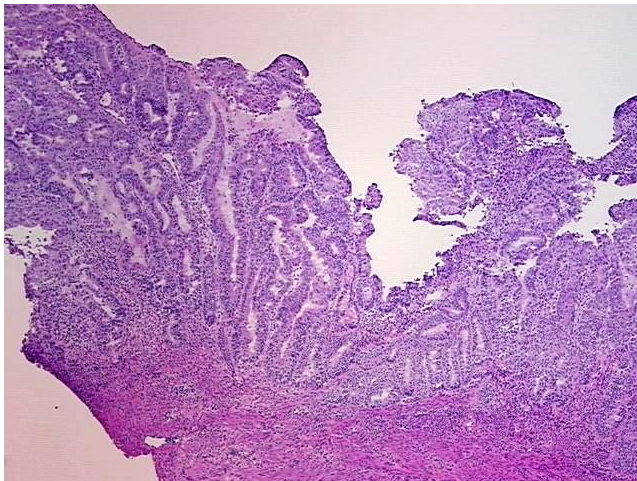
Product Type:	Total RNA
Disease State:	Cancer
Diagnosis Category:	Endometrial Cancer
Tissue:	Endometrium
Frozen Sample ID:	FR00021B3B
Case ID:	CI0000007125
Prep:	1
Vial ID:	RN000039FD
Tissue of Origin:	Endometrium
Site of Finding:	Endometrium
Appearance:	Tumor
Sample Diagnosis (from Pathology Verification):	Adenocarcinoma of endometrium
Normal:	40%
Lesional:	0%
Tumor:	50%
Tumor Hypo/Acellular Stroma:	10%
Tumor Hypercellular Stroma:	0%
Necrosis:	0%
Pathology Verification notes from H&E review:	adenocarcinoma of endometrium, mixed endometrioid and papillary serous types; tumor stroma: 60% mixed inflammatory cells, 40% desmoplasia; normal: 100% myometrium
Bioanalyzer Ratio (28S/18S):	1.61



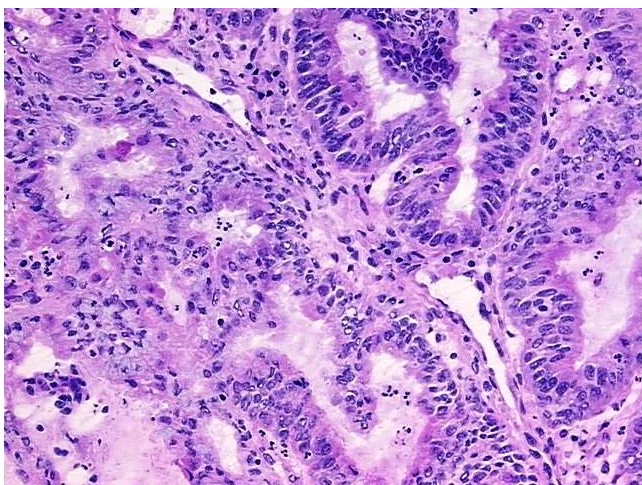
[View online »](#)

<b>CASE Diagnosis (from medical center path report):</b>	Adenocarcinoma of endometrium, endometrioid, papillary serous
<b>Age:</b>	79
<b>Gender:</b>	Female
<b>Race:</b>	White or Caucasian
<b>Tumor Grade:</b>	FIGO G3: Poorly differentiated
<b>Minimum Stage Grouping:</b>	IB
<b>T (Extent of Primary Tumor):</b>	T1b
<b>N (Lymph node metastasis):</b>	N0
<b>M (Distant metastasis):</b>	MX
<b>Storage:</b>	Store tissue total RNA at -80°C.
<b>Stability:</b>	These products are stable for one year from date of shipping when stored at -80°C without repeated freeze/thaws.

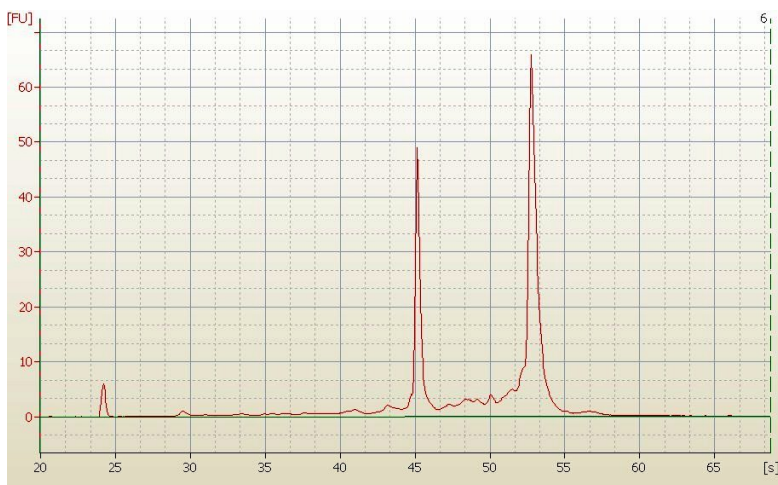
### Product images:



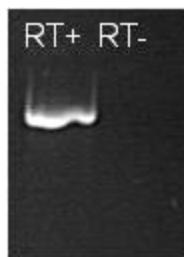
4x Image



20x Image



RNA Electropherogram Image



RNA RT-PCR Image