

## Product datasheet for CR560678

### Tissue Total RNA, Lymphoid tissue

#### Product data:

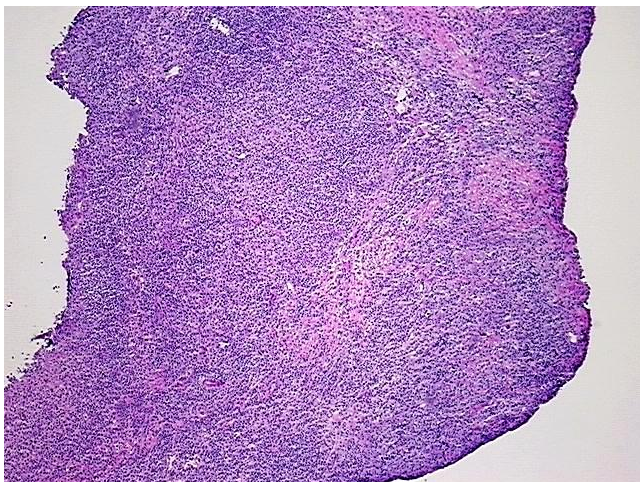
|   |  |
|---|--|
| Product Type:                                   | Total RNA  |
| Disease State:                                  | Cancer   |
| Diagnosis Category:                             | Lymphoma   |
| Tissue:   | Lymphoid tissue  |
| Frozen Sample ID:                               | FR000218E9   |
| Case ID:  | CI0000007072   |
| Prep:   | 1  |
| Vial ID:  | RN00000DF2   |
| Tissue of Origin:                               | Lymphoid tissue  |
| Site of Finding:                                | Lymph node   |
| Appearance:                                     | Tumor  |
| Sample Diagnosis (from Pathology Verification): | Lymphoma, Hodgkin, nodular sclerosing                    |
| Normal:   | 5%   |
| Lesional:                                       | 0%   |
| Tumor:  | 75%  |
| Tumor Hypo/Acellular Stroma:                    | 10%  |
| Tumor Hypercellular Stroma:                     | 10%  |
| Necrosis:                                       | 0%   |
| Pathology Verification notes from H&E review:   | syncytial variant of nodular sclerosing Hodgkin lymphoma |
| Bioanalyzer Ratio (28S/18S):                    | 1.22   |



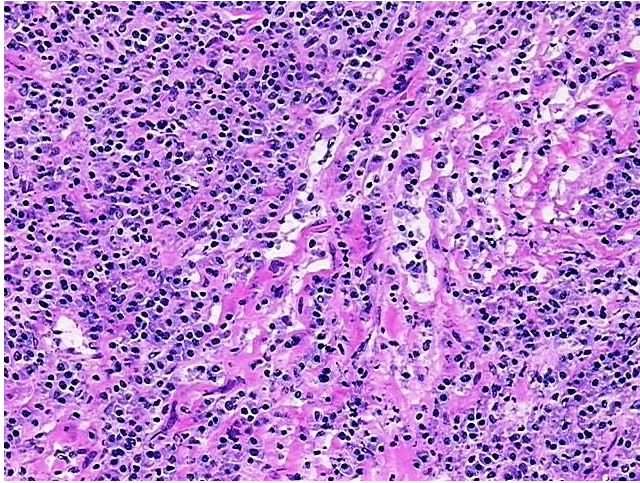
[View online »](#)

|  |   |
|--|---|
| <b>CASE Diagnosis (from medical center path report):</b> | Lymphoma, Hodgkin, nodular sclerosing   |
| <b>Age:</b>  | 65  |
| <b>Gender:</b>   | Female  |
| <b>Tumor Grade:</b>                                      | Not Reported  |
| <b>Minimum Stage Grouping:</b>                           | I   |
| <b>T (Extent of Primary Tumor):</b>                      | Not applicable  |
| <b>N (Lymph node metastasis):</b>                        | Not applicable  |
| <b>M (Distant metastasis):</b>                           | Not applicable  |
| <b>Diagnostic Test Results:</b>                          | CD3 ~ Leu4 ~ UCHT1 ! by IHC,Negative; CD45 ~ Leukocyte common antigen ! by IHC,Negative; CD20 ~ B1 ~ Leu16 ! by IHC,Negative; CD30 ~ Ki1 ! by IHC,Positive; CD15 ~ Lewis X ~ Leu M1 ! by IHC,Negative |
| <b>Storage:</b>  | Store tissue total RNA at -80°C.  |
| <b>Stability:</b>  | These products are stable for one year from date of shipping when stored at -80°C without repeated freeze/thaws.  |

### Product images:



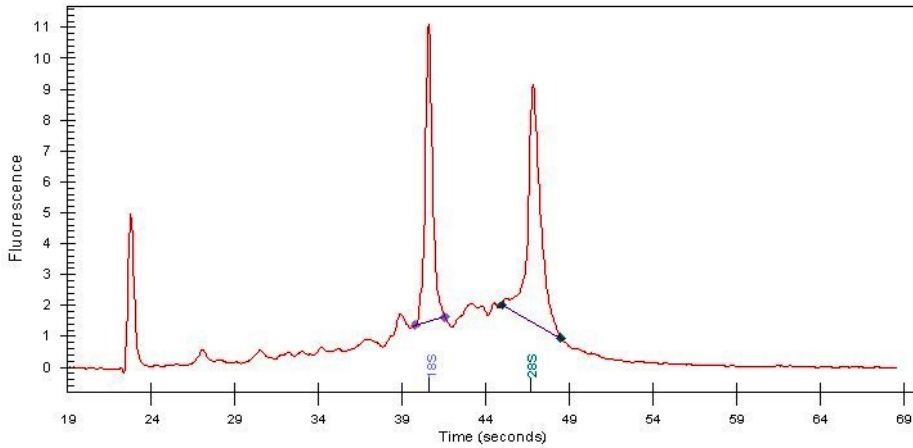
4x Image



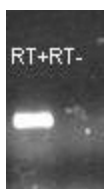
20x Image



RNA Gel Image



RNA Electropherogram Image



RNA RT-PCR Image