

Product datasheet for CR560652

Tissue Total RNA, Breast

Product data:

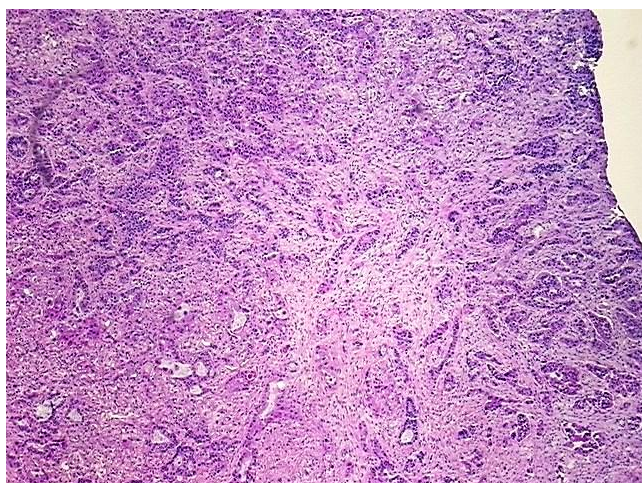
| | |
|---|---|
| Product Type: | Total RNA |
| Disease State: | Cancer |
| Diagnosis Category: | Breast Cancer |
| Tissue: | Breast |
| Frozen Sample ID: | FR00023E3F |
| Case ID: | CI0000007260 |
| Prep: | 1 |
| Vial ID: | RN00001C96 |
| Tissue of Origin: | Breast |
| Site of Finding: | Chest wall |
| Appearance: | Tumor |
| Sample Diagnosis (from Pathology Verification): | Adenocarcinoma of breast, ductal, recurrent |
| Normal: | 0% |
| Lesional: | 0% |
| Tumor: | 75% |
| Tumor Hypo/Acellular Stroma: | 25% |
| Tumor Hypercellular Stroma: | 0% |
| Necrosis: | 0% |
| Bioanalyzer Ratio (28S/18S): | 1.44 |
| CASE Diagnosis (from medical center path report): | Adenocarcinoma of breast, ductal, recurrent |
| Age: | 79 |



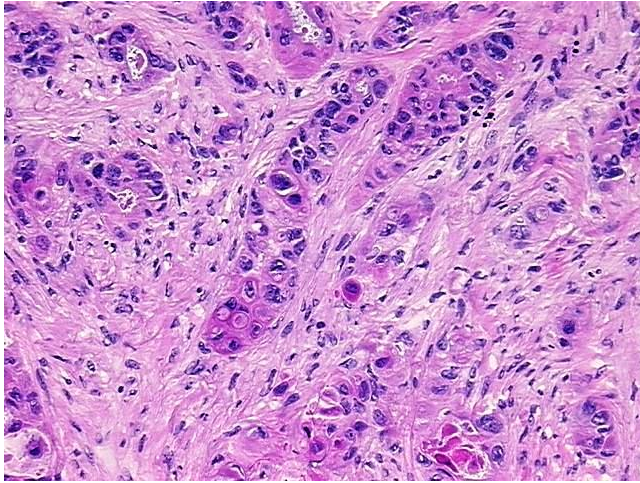
[View online »](#)

| | |
|------------------------------|--|
| Gender: | Female |
| Tumor Grade: | Nottingham G3: 8-9 points High combined grade (unfavorable) |
| Minimum Stage Grouping: | IIIB |
| T (Extent of Primary Tumor): | T4a |
| N (Lymph node metastasis): | N1 |
| M (Distant metastasis): | MX |
| Diagnostic Test Results: | Progesterone receptor ~ PR ! by IHC,Positive; Estrogen receptor ~ ER ! by IHC,Positive; HER2 ~ ERBB2 ~ Neu ! by IHC,Negative; CD31 ~ PECAM1 ! by IHC,Negative; Cytokeratin AE1/AE3 ~ AE1/AE3 ! by IHC,Negative |
| Storage: | Store tissue total RNA at -80°C. |
| Stability: | These products are stable for one year from date of shipping when stored at -80°C without repeated freeze/thaws. |

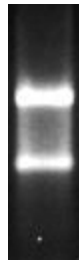
Product images:



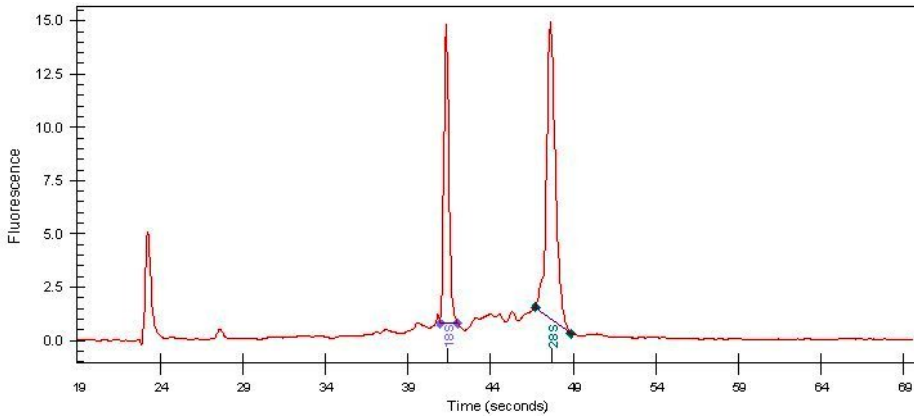
4x Image



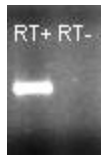
20x Image



RNA Gel Image



RNA Electropherogram Image



RNA RT-PCR Image