

Product datasheet for CR560646

Tissue Total RNA, Lung

Product data:

Product Type:	Total RNA
Disease State:	Cancer
Diagnosis Category:	Lung Cancer
Tissue:	Lung
Frozen Sample ID:	FR0002621E
Case ID:	CI0000006354
Prep:	1
Vial ID:	RN00003883
Tissue of Origin:	Lung
Site of Finding:	Lung
Appearance:	Tumor
Sample Diagnosis (from Pathology Verification):	Carcinoma of lung, bronchioloalveolar
Normal:	5%
Lesional:	0%
Tumor:	65%
Tumor Hypo/Acellular Stroma:	25%
Tumor Hypercellular Stroma:	5%
Necrosis:	0%
Pathology Verification notes from H&E review:	cellular tumor stroma: 70% desmoplasia, 30% mixed inflammatory cells; hypo/acellular tumor stroma: 100% fibrosis
Bioanalyzer Ratio (28S/18S):	1.73



[View online »](#)

CASE Diagnosis (from medical center path report): Carcinoma of lung, bronchioloalveolar

Age: 76

Gender: Male

Race: White or Caucasian

Tumor Grade: AJCC G1: Well differentiated

Minimum Stage Grouping: IA

T (Extent of Primary Tumor): T1

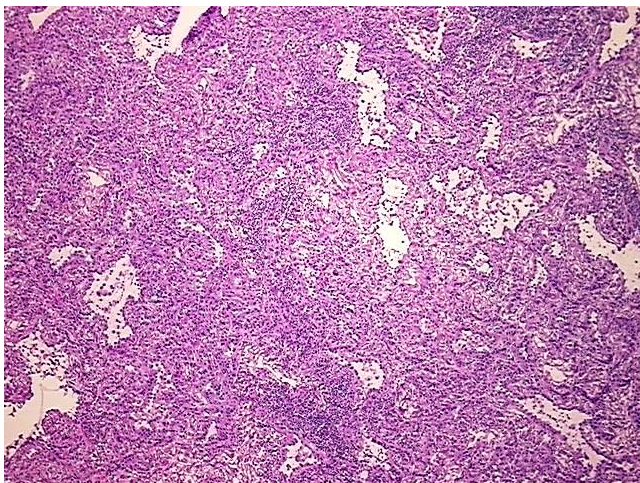
N (Lymph node metastasis): N0

M (Distant metastasis): MX

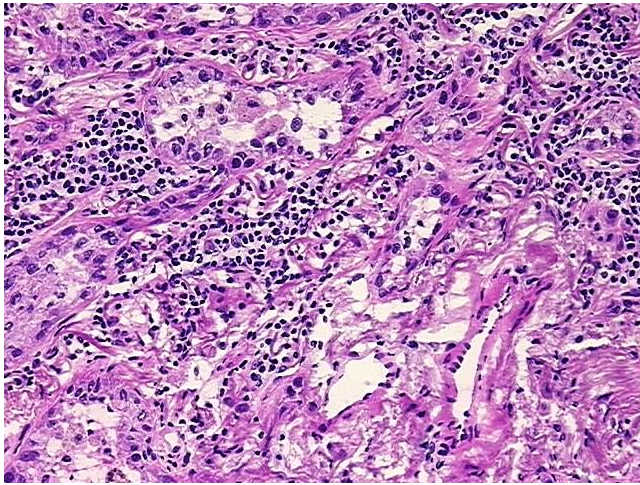
Storage: Store tissue total RNA at -80°C.

Stability: These products are stable for one year from date of shipping when stored at -80°C without repeated freeze/thaws.

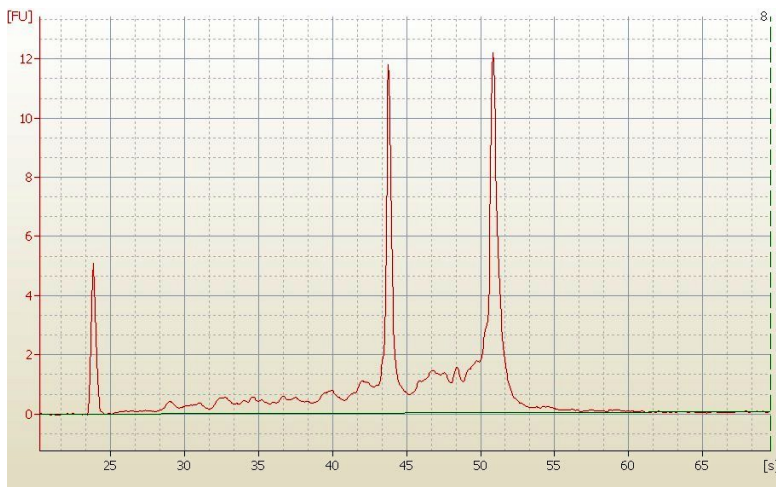
Product images:



4x Image



20x Image



RNA Electropherogram Image



RNA RT-PCR Image