

Product datasheet for CR560628

Tissue Total RNA, Lymphoid tissue

Product data:

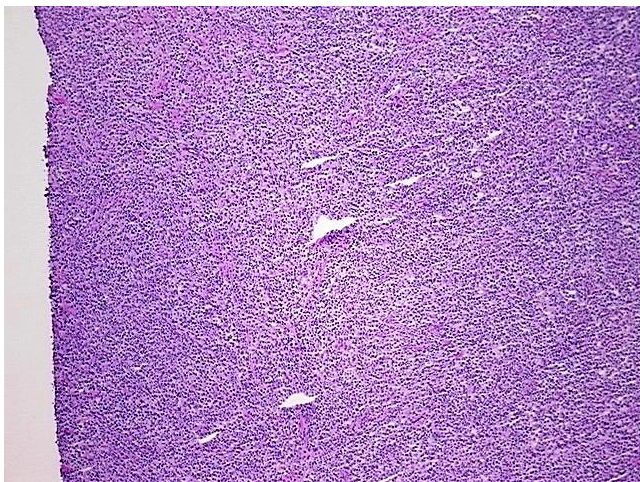
Product Type:	Total RNA
Disease State:	Cancer
Diagnosis Category:	Lymphoma
Tissue:	Lymphoid tissue
Frozen Sample ID:	FR0001ECFA
Case ID:	CI0000006763
Prep:	2
Vial ID:	RN000010F4
Tissue of Origin:	Lymphoid tissue
Site of Finding:	Lymph node
Appearance:	Tumor
Sample Diagnosis (from Pathology Verification):	Lymphoma, large B-cell, diffuse
Normal:	0%
Lesional:	0%
Tumor:	90%
Tumor Hypo/Acellular Stroma:	10%
Tumor Hypercellular Stroma:	0%
Necrosis:	0%
Pathology Verification notes from H&E review:	Flow cytometry study also suggests the possibility of blastic variant of mantle cell lymphoma
Bioanalyzer Ratio (28S/18S):	1.21



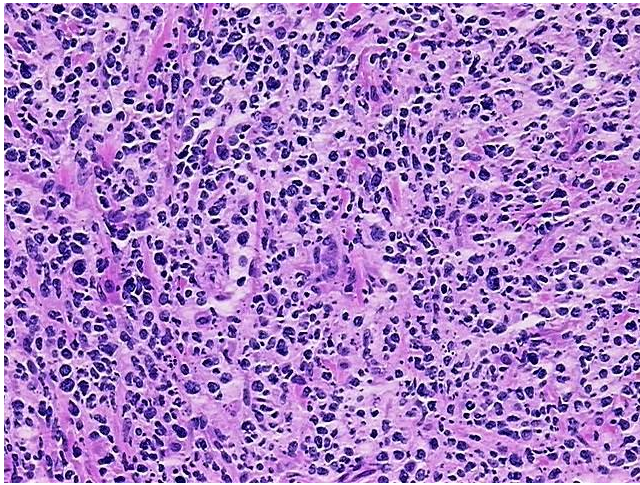
[View online »](#)

CASE Diagnosis (from medical center path report):	Lymphoma, large B-cell, diffuse
Age:	69
Gender:	Male
Tumor Grade:	Not Reported
Minimum Stage Grouping:	I
T (Extent of Primary Tumor):	Not applicable
N (Lymph node metastasis):	Not applicable
M (Distant metastasis):	Not applicable
Diagnostic Test Results:	CD3 ~ Leu4 ~ UCHT1 ! by IHC,Negative; CD45RO ~ A6 ~ UCHL1 ! by IHC,Negative; S100 protein,Negative; Synaptophysin ~ SYN ! by IHC,Negative; HMB45 melanoma antigen ~ GP100 ! by IHC,Negative; Cytokeratin 20 ~ CK20 ! by IHC,Negative; Chromograni
Storage:	Store tissue total RNA at -80°C.
Stability:	These products are stable for one year from date of shipping when stored at -80°C without repeated freeze/thaws.

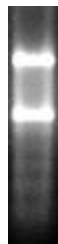
Product images:



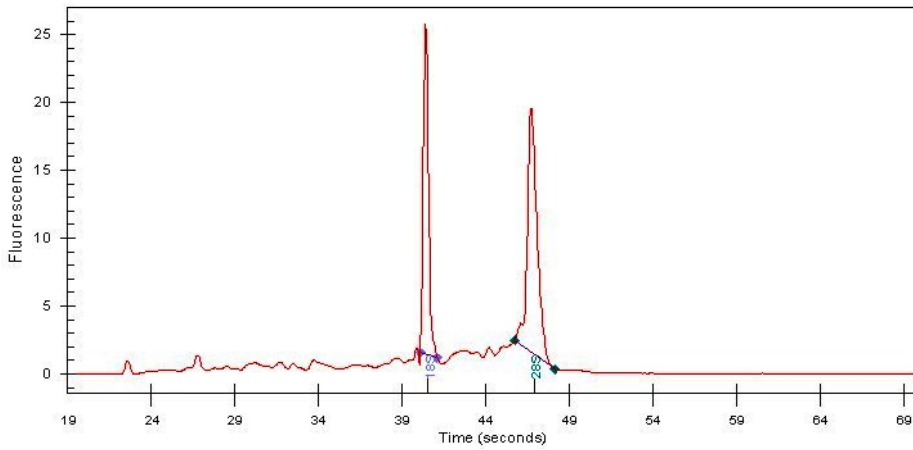
4x Image



20x Image



RNA Gel Image



RNA Electropherogram Image



RNA RT-PCR Image