

Product datasheet for **CR560619**

Tissue Total RNA, Gastroesophageal junction

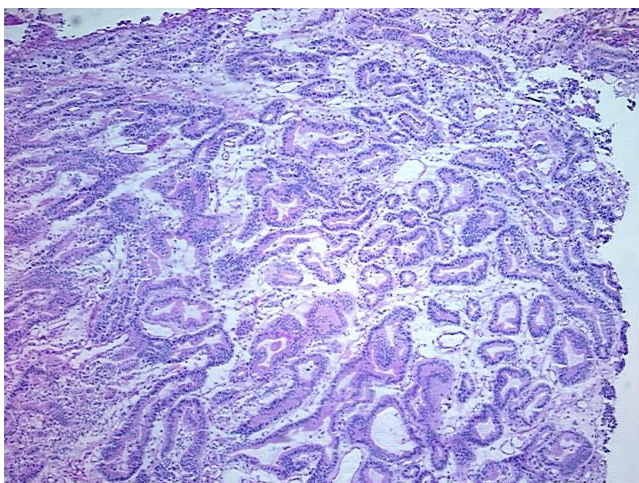
Product data:

Product Type:	Total RNA
Disease State:	Cancer
Diagnosis Category:	Esophageal/Gastroesophageal Cancer
Tissue:	Gastroesophageal junction
Frozen Sample ID:	FR00017390
Case ID:	CI0000005086
Prep:	3
Vial ID:	RN0000256E
Tissue of Origin:	Gastroesophageal junction
Site of Finding:	Esophagus
Appearance:	Tumor
Sample Diagnosis (from Pathology Verification):	Adenocarcinoma of gastroesophageal junction
Normal:	0%
Lesional:	0%
Tumor:	65%
Tumor Hypo/Acellular Stroma:	10%
Tumor Hypercellular Stroma:	20%
Necrosis:	5%
Bioanalyzer Ratio (28S/18S):	1.61
CASE Diagnosis (from medical center path report):	Adenocarcinoma of gastroesophageal junction
Age:	56

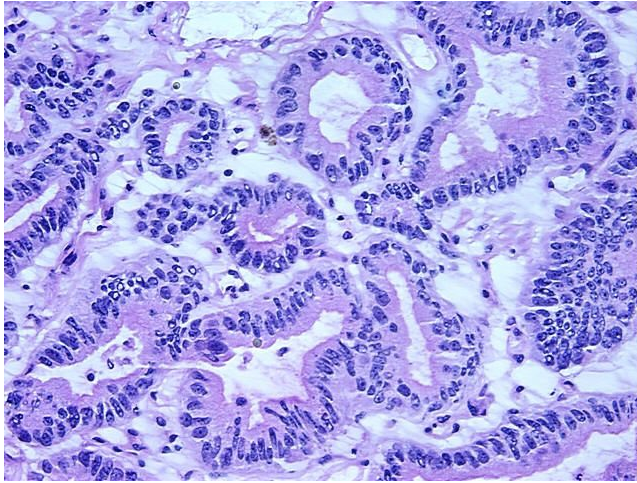


[View online »](#)

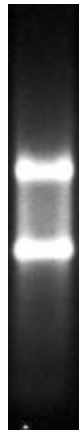
Gender:	Male
Race:	White or Caucasian
Tumor Grade:	Not Reported
Minimum Stage Grouping:	I
T (Extent of Primary Tumor):	T1
N (Lymph node metastasis):	N0
M (Distant metastasis):	MX
Storage:	Store tissue total RNA at -80°C.
Stability:	These products are stable for one year from date of shipping when stored at -80°C without repeated freeze/thaws.

Product images:

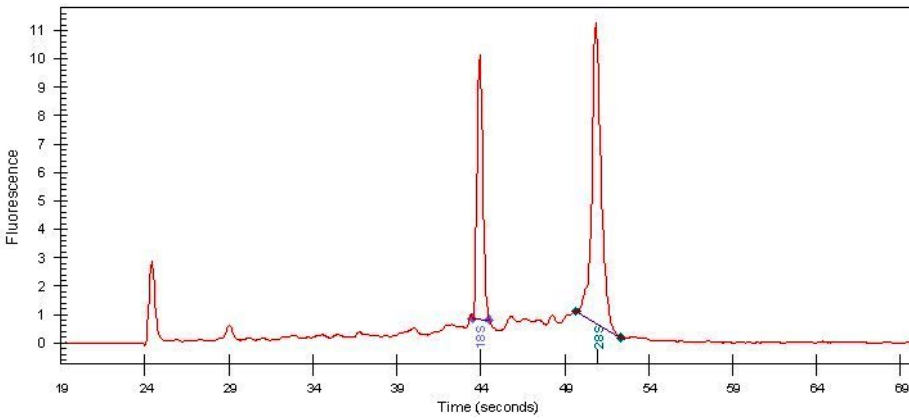
4x Image



20x Image



RNA Gel Image



RNA Electropherogram Image



RNA RT-PCR Image