

Product datasheet for CR560616

Tissue Total RNA, Ovary

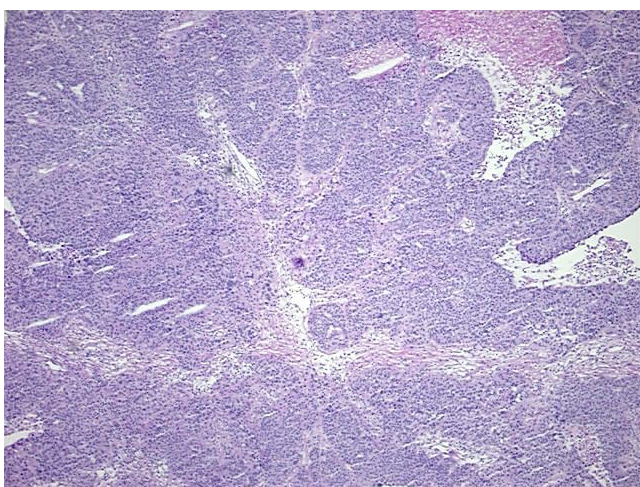
Product data:

Product Type:	Total RNA
Disease State:	Cancer
Diagnosis Category:	Ovarian Cancer
Tissue:	Ovary
Frozen Sample ID:	FR000171A5
Case ID:	CI0000005047
Prep:	1
Vial ID:	RN000011F0
Tissue of Origin:	Ovary
Site of Finding:	Ovary
Appearance:	Tumor
Sample Diagnosis (from Pathology Verification):	Adenocarcinoma of ovary, serous
Normal:	0%
Lesional:	0%
Tumor:	80%
Tumor Hypo/Acellular Stroma:	5%
Tumor Hypercellular Stroma:	0%
Necrosis:	15%
Bioanalyzer Ratio (28S/18S):	1.74
CASE Diagnosis (from medical center path report):	Adenocarcinoma of ovary, serous
Age:	65

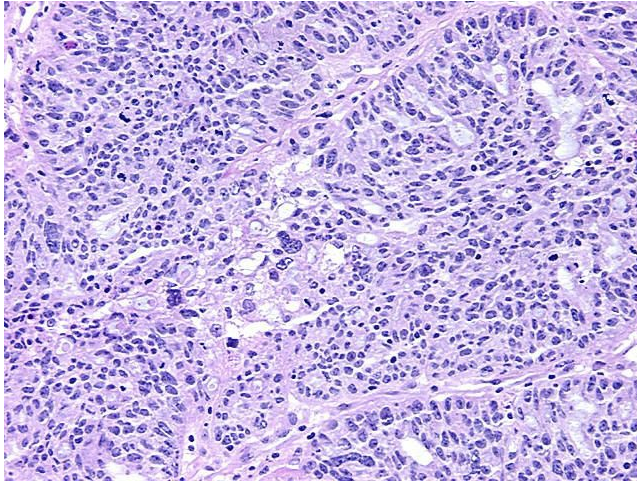


[View online »](#)

Gender:	Female
Race:	White or Caucasian
Tumor Grade:	FIGO G3: Poorly differentiated
Minimum Stage Grouping:	IIB
T (Extent of Primary Tumor):	T2b
N (Lymph node metastasis):	N0
M (Distant metastasis):	MX
Diagnostic Test Results:	Proliferation index ~ PI,High; HER2 ~ ERBB2 ~ Neu ! by IHC,Negative
Storage:	Store tissue total RNA at -80°C.
Stability:	These products are stable for one year from date of shipping when stored at -80°C without repeated freeze/thaws.

Product images:

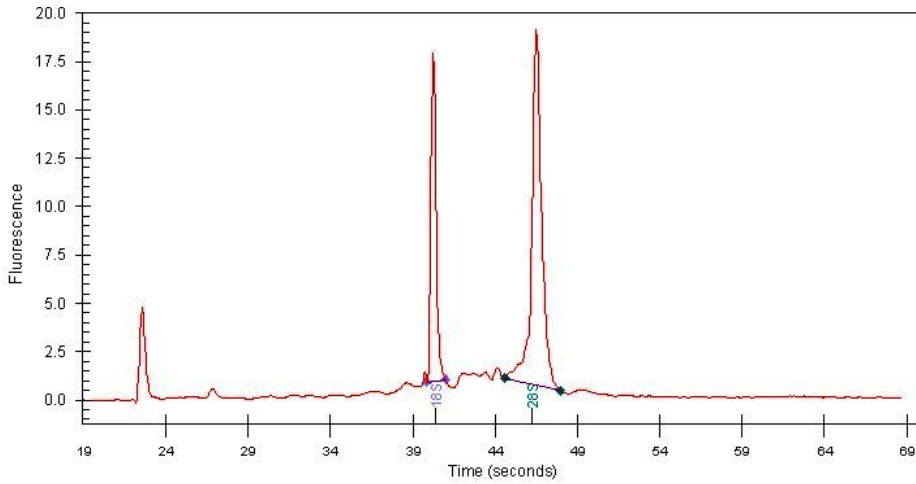
4x Image



20x Image



RNA Gel Image



RNA Electropherogram Image



RNA RT-PCR Image