

Product datasheet for CR560615

Tissue Total RNA, Breast

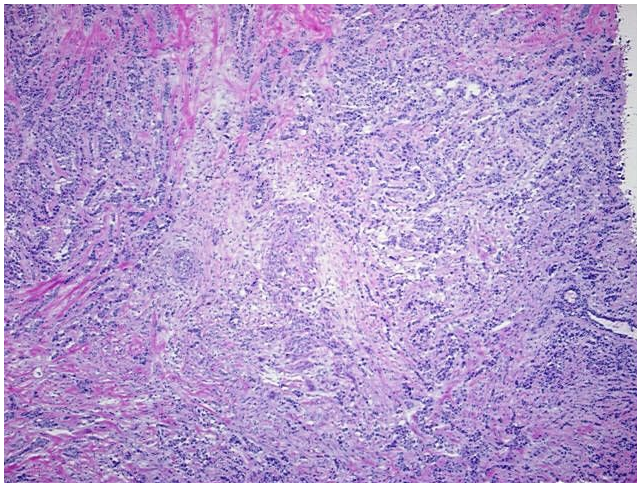
Product data:

Product Type:	Total RNA
Disease State:	Cancer
Diagnosis Category:	Breast Cancer
Tissue:	Breast
Frozen Sample ID:	FR0001E37A
Case ID:	CI0000006783
Prep:	4
Vial ID:	RN0000150D
Tissue of Origin:	Breast
Site of Finding:	Breast
Appearance:	Tumor
Sample Diagnosis (from Pathology Verification):	Adenocarcinoma of breast, ductal
Normal:	12%
Lesional:	0%
Tumor:	60%
Tumor Hypo/Acellular Stroma:	10%
Tumor Hypercellular Stroma:	18%
Necrosis:	0%
Bioanalyzer Ratio (28S/18S):	1.1
CASE Diagnosis (from medical center path report):	Adenocarcinoma of breast, ductal
Age:	53

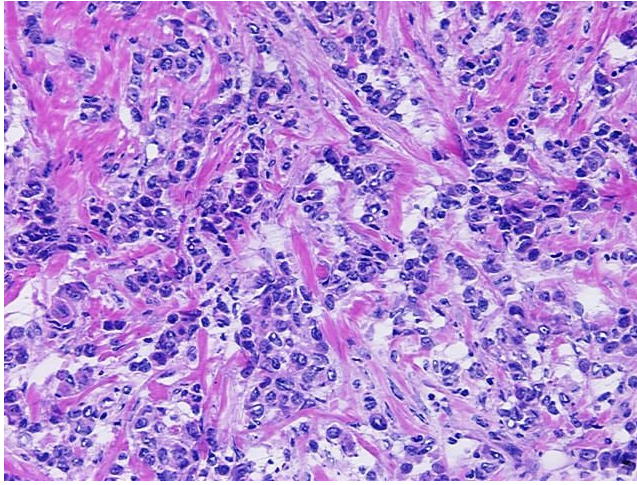


[View online »](#)

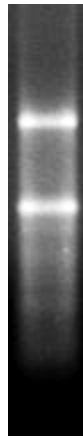
Gender:	Female
Tumor Grade:	Nottingham G3: 8-9 points High combined grade (unfavorable)
Minimum Stage Grouping:	IIA
T (Extent of Primary Tumor):	T2
N (Lymph node metastasis):	N0
M (Distant metastasis):	MX
Diagnostic Test Results:	Progesterone receptor ~ PR ! by IHC,Positive, weak; Estrogen receptor ~ ER ! by IHC,Positive, weak; ERBB2,Amplified copy number; HER2 ~ ERBB2 ~ Neu ! by IHC,Positive, strong
Storage:	Store tissue total RNA at -80°C.
Stability:	These products are stable for one year from date of shipping when stored at -80°C without repeated freeze/thaws.

Product images:

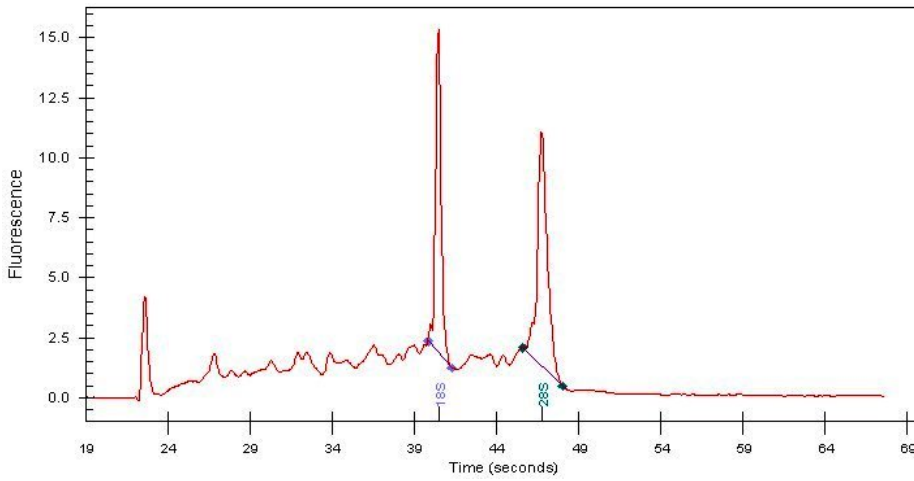
4x Image



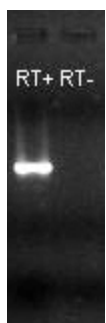
20x Image



RNA Gel Image



RNA Electropherogram Image



RNA RT-PCR Image