

Product datasheet for CR560582

Tissue Total RNA, Ovary: bilateral

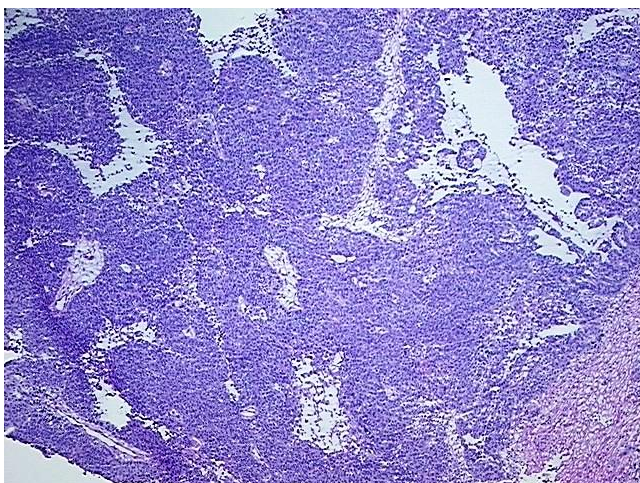
Product data:

Product Type:	Total RNA
Disease State:	Cancer
Diagnosis Category:	Ovarian Cancer
Tissue:	Ovary
Frozen Sample ID:	FR00033B29
Case ID:	CI0000013049
Prep:	1
Vial ID:	RN000033CB
Tissue of Origin:	Ovary: bilateral
Site of Finding:	Ovary
Appearance:	Tumor
Sample Diagnosis (from Pathology Verification):	Carcinoma of ovary, papillary serous
Normal:	0%
Lesional:	0%
Tumor:	85%
Tumor Hypo/Acellular Stroma:	0%
Tumor Hypercellular Stroma:	15%
Necrosis:	0%
Bioanalyzer Ratio (28S/18S):	1.05
CASE Diagnosis (from medical center path report):	Carcinoma of ovary, papillary serous
Age:	65

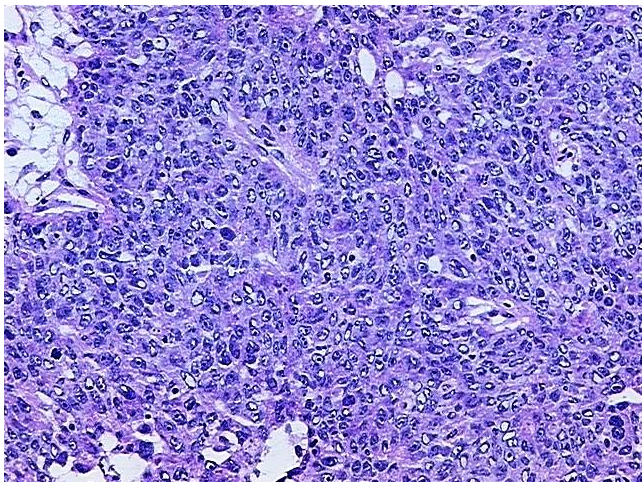


[View online »](#)

Gender:	Female
Race:	White or Caucasian
Tumor Grade:	FIGO G3: Poorly differentiated
Minimum Stage Grouping:	IC
T (Extent of Primary Tumor):	T1c
N (Lymph node metastasis):	N0
M (Distant metastasis):	MX
Storage:	Store tissue total RNA at -80°C.
Stability:	These products are stable for one year from date of shipping when stored at -80°C without repeated freeze/thaws.

Product images:

4x Image



20x Image