

## Product datasheet for **CR560549**

### Tissue Total RNA, Urinary bladder

#### Product data:

Product Type:	Total RNA
Disease State:	Cancer
Diagnosis Category:	Bladder Cancer
Tissue:	Urinary bladder
Frozen Sample ID:	FR00034CAB
Case ID:	CI0000012779
Prep:	1
Vial ID:	RN000032CB
Tissue of Origin:	Urinary bladder
Site of Finding:	Lymph node
Appearance:	Tumor
Sample Diagnosis (from Pathology Verification):	Carcinoma of bladder, transitional cell, metastatic
Normal:	10%
Lesional:	0%
Tumor:	60%
Tumor Hypo/Acellular Stroma:	10%
Tumor Hypercellular Stroma:	10%
Necrosis:	10%
Pathology Verification notes from H&E review:	Tumor Stroma (Cellular): Inflammatory cells; Tumor Stroma (Hypo/Acellular): Fibrosis
Bioanalyzer Ratio (28S/18S):	1.29



[View online »](#)

**CASE Diagnosis (from medical center path report):** Carcinoma of bladder, transitional cell

**Age:** 75

**Gender:** Male

**Race:** White or Caucasian

**Tumor Grade:** AJCC G3: Poorly differentiated

**Minimum Stage Grouping:** IV

**T (Extent of Primary Tumor):** T3b

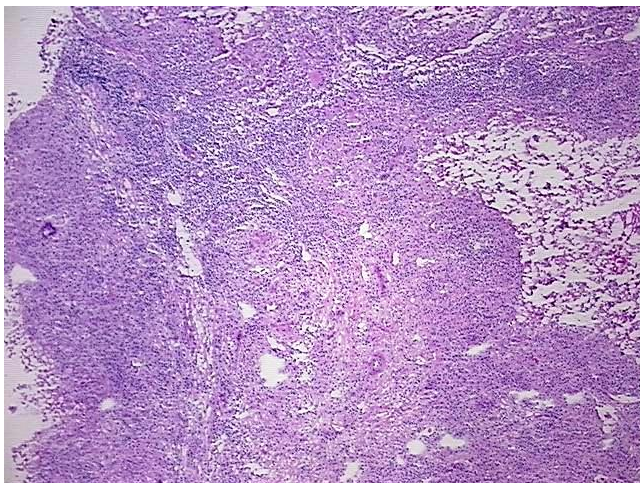
**N (Lymph node metastasis):** N2

**M (Distant metastasis):** MX

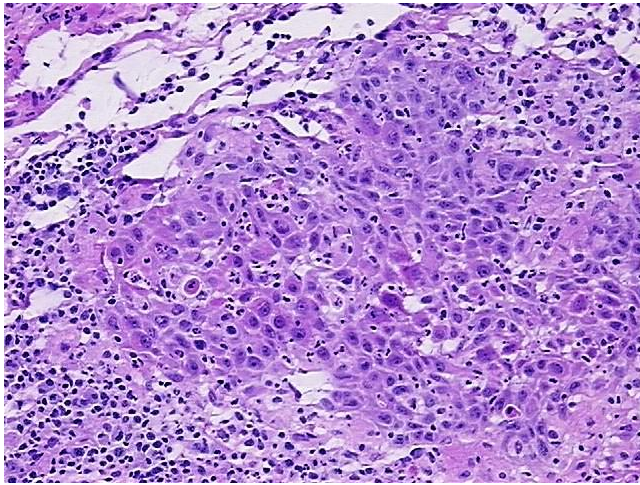
**Storage:** Store tissue total RNA at -80°C.

**Stability:** These products are stable for one year from date of shipping when stored at -80°C without repeated freeze/thaws.

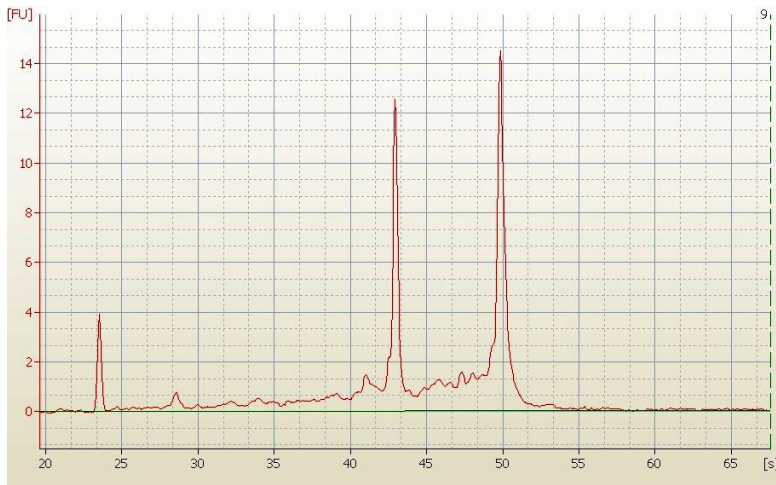
### Product images:



4x Image



20x Image



RNA Electropherogram Image



RNA RT-PCR Image