

## Product datasheet for CR560539

### Tissue Total RNA, Liver

#### Product data:

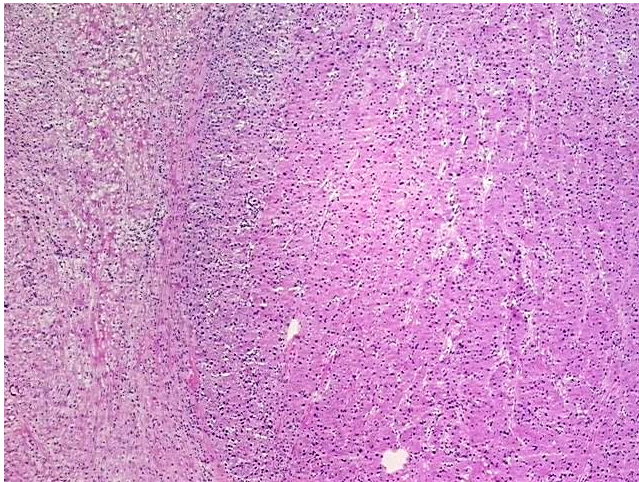
Product Type:	Total RNA
Disease State:	Cancer
Diagnosis Category:	Liver Cancer
Tissue:	Liver
Frozen Sample ID:	FR000337A5
Case ID:	CI0000013002
Prep:	1
Vial ID:	RN000030B6
Tissue of Origin:	Liver
Site of Finding:	Omentum
Appearance:	Tumor
Sample Diagnosis (from Pathology Verification):	Carcinoma of liver, hepatocellular, metastatic
Normal:	0%
Lesional:	0%
Tumor:	50%
Tumor Hypo/Acellular Stroma:	0%
Tumor Hypercellular Stroma:	45%
Necrosis:	5%
Pathology Verification notes from H&E review:	Tumor Stroma (Hypo/Acellular): Fibrosis; Inflammation: Mild Lymphoplasmacytic infiltrate
Bioanalyzer Ratio (28S/18S):	1.28



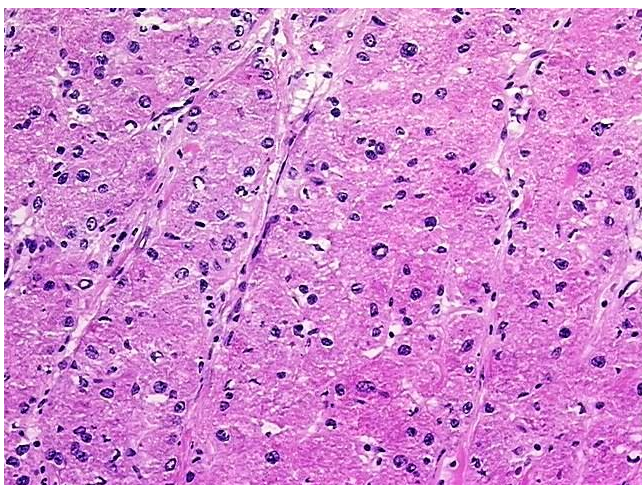
[View online »](#)

<b>CASE Diagnosis (from medical center path report):</b>	Carcinoma of liver, hepatocellular, metastatic
<b>Age:</b>	70
<b>Gender:</b>	Male
<b>Race:</b>	White or Caucasian
<b>Tumor Grade:</b>	AJCC G3: Poorly differentiated
<b>Minimum Stage Grouping:</b>	IV
<b>T (Extent of Primary Tumor):</b>	TX
<b>N (Lymph node metastasis):</b>	NX
<b>M (Distant metastasis):</b>	M1
<b>Diagnostic Test Results:</b>	CEAp ~ CEA, polyclonal,Positive; Cytokeratin 20 ~ CK20 ! by IHC,Negative; Cytokeratin 7 ~ CK7 ! by IHC,Negative; Cytokeratin CAM5.2 ~ CAM5.2 ! by IHC,Positive; CD10 ~ CALLA ~ Common ALL antigen ! by IHC,Positive; Cytokeratin AE1/AE3 ~ AE1/AE
<b>Storage:</b>	Store tissue total RNA at -80°C.
<b>Stability:</b>	These products are stable for one year from date of shipping when stored at -80°C without repeated freeze/thaws.

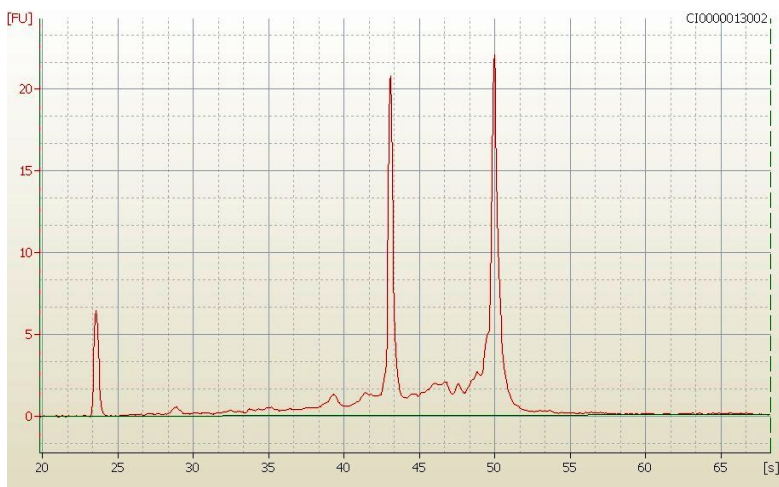
### Product images:



4x Image



20x Image



RNA Electropherogram Image



RNA RT-PCR Image