

## Product datasheet for **CR560536**

### Tissue Total RNA, Breast, left

#### Product data:

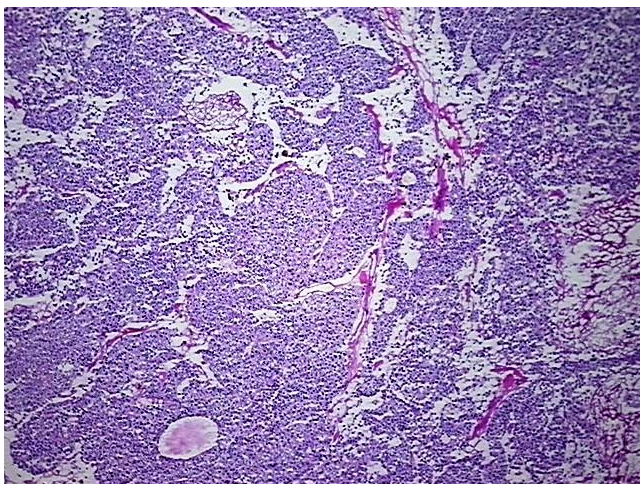
|   |  |
|---|--|
| Product Type:                                   | Total RNA  |
| Disease State:                                  | Cancer   |
| Diagnosis Category:                             | Breast Cancer  |
| Tissue:   | Breast   |
| Frozen Sample ID:                               | FR00034CC1   |
| Case ID:  | CI0000012789   |
| Prep:   | 3  |
| Vial ID:  | RN000031D3   |
| Tissue of Origin:                               | Breast, left   |
| Site of Finding:                                | Breast, left   |
| Appearance:                                     | Tumor  |
| Sample Diagnosis (from Pathology Verification): | Adenocarcinoma of breast, ductal (HER2+)                           |
| Normal:   | 0%   |
| Lesional:                                       | 0%   |
| Tumor:  | 70%  |
| Tumor Hypo/Acellular Stroma:                    | 30%  |
| Tumor Hypercellular Stroma:                     | 0%   |
| Necrosis:                                       | 0%   |
| Pathology Verification notes from H&E review:   | Tumor Stroma (Cellular): Desmoplastic reaction, Inflammatory cells |
| Bioanalyzer Ratio (28S/18S):                    | 1.69   |



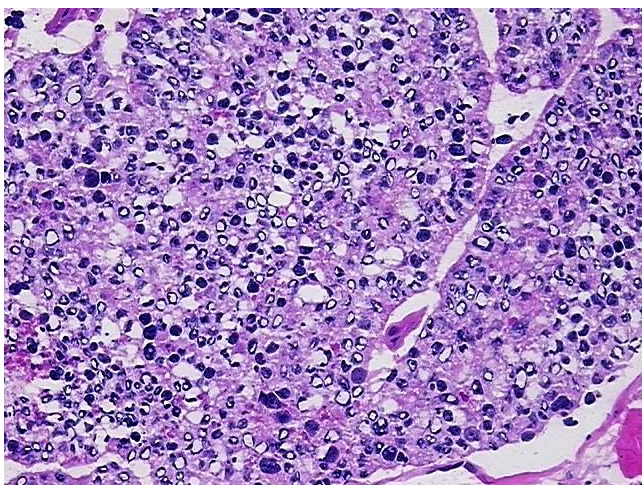
[View online »](#)

|  |   |
|--|---|
| <b>CASE Diagnosis (from medical center path report):</b> | Adenocarcinoma of breast, ductal  |
| <b>Age:</b>  | 89  |
| <b>Gender:</b>   | Female  |
| <b>Race:</b>   | White or Caucasian  |
| <b>Tumor Grade:</b>                                      | Nottingham G3: 8-9 points High combined grade (unfavorable)   |
| <b>Minimum Stage Grouping:</b>                           | IIB   |
| <b>T (Extent of Primary Tumor):</b>                      | T3  |
| <b>N (Lymph node metastasis):</b>                        | N0  |
| <b>M (Distant metastasis):</b>                           | MX  |
| <b>Diagnostic Test Results:</b>                          | Progesterone receptor ~ PR ! by IHC,Positive; Estrogen receptor ~ ER ! by IHC,Positive; ERBB2,Amplified copy number; HER2 ~ ERBB2 ~ Neu ! by IHC,Positive, weak |
| <b>Storage:</b>  | Store tissue total RNA at -80°C.  |
| <b>Stability:</b>  | These products are stable for one year from date of shipping when stored at -80°C without repeated freeze/thaws.  |

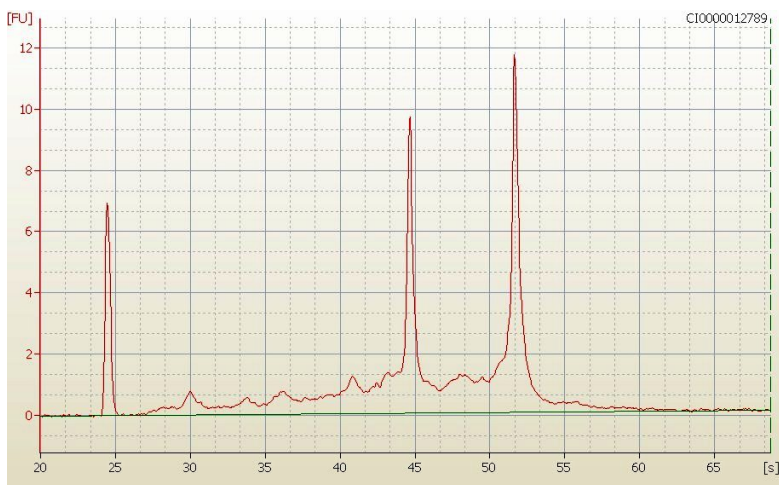
### Product images:



4x Image



20x Image



RNA Electropherogram Image



RNA RT-PCR Image