

Product datasheet for CR560530

Tissue Total RNA, Soft tissue

Product data:

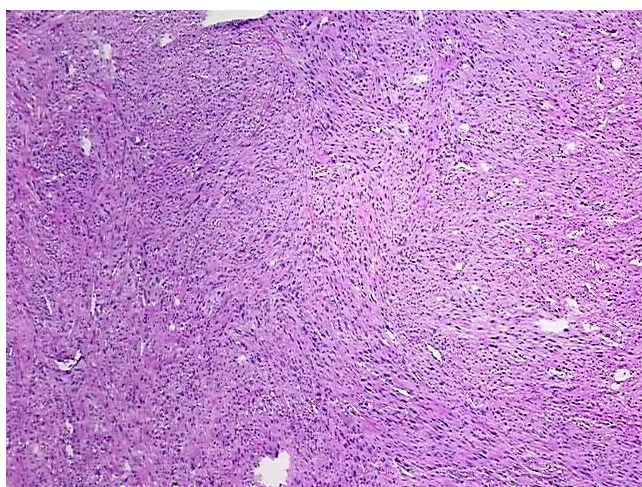
Product Type:	Total RNA
Disease State:	Cancer
Diagnosis Category:	Sarcoma
Tissue:	Soft tissue
Frozen Sample ID:	FR00038506
Case ID:	CI0000013839
Prep:	1
Vial ID:	RN00003244
Tissue of Origin:	Soft tissue
Site of Finding:	Leg
Appearance:	Tumor
Sample Diagnosis (from Pathology Verification):	Sarcoma, pleomorphic
Normal:	0%
Lesional:	0%
Tumor:	85%
Tumor Hypo/Acellular Stroma:	0%
Tumor Hypercellular Stroma:	0%
Necrosis:	15%
Pathology Verification notes from H&E review:	Pleomorphic sarcoma with myoid differentiation
Bioanalyzer Ratio (28S/18S):	1.44



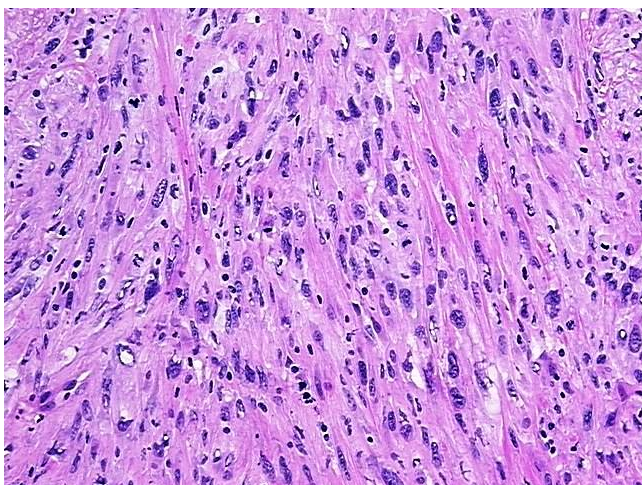
[View online »](#)

CASE Diagnosis (from medical center path report):	Sarcoma, pleomorphic
Age:	89
Gender:	Female
Race:	White or Caucasian
Tumor Grade:	AJCC G3: Poorly differentiated
Minimum Stage Grouping:	III
T (Extent of Primary Tumor):	T2b
N (Lymph node metastasis):	NX
M (Distant metastasis):	MX
Diagnostic Test Results:	Myogenin ~ Myf4 ! by IHC,Negative; Smooth muscle actin ~ SMA ~ Alpha-SMA ! by IHC,Positive, weak; S100 protein,Negative; Desmin ! by IHC,Negative; Cytokeratin CAM5.2 ~ CAM5.2 ! by IHC,Negative; CD31 ~ PECAM1 ! by IHC,Negative; CD34 ~ HPCA ! by
Storage:	Store tissue total RNA at -80°C.
Stability:	These products are stable for one year from date of shipping when stored at -80°C without repeated freeze/thaws.

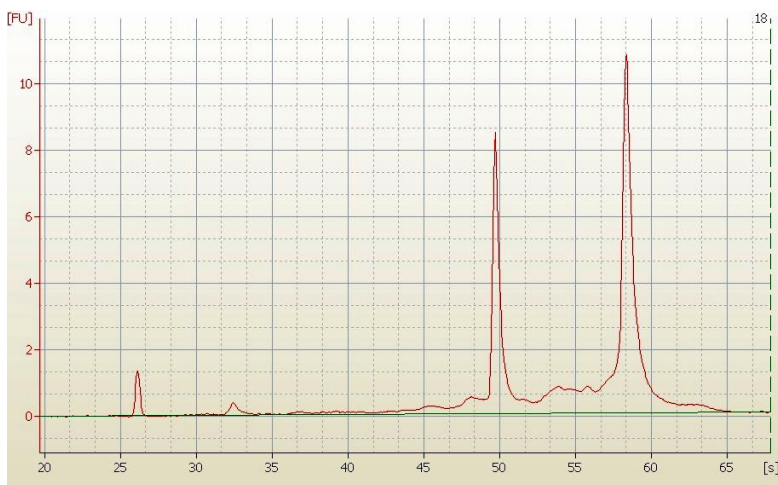
Product images:



4x Image



20x Image



RNA Electropherogram Image



RNA RT-PCR Image