

## Product datasheet for CR560508

### Tissue Total RNA, Renal pelvis

#### Product data:

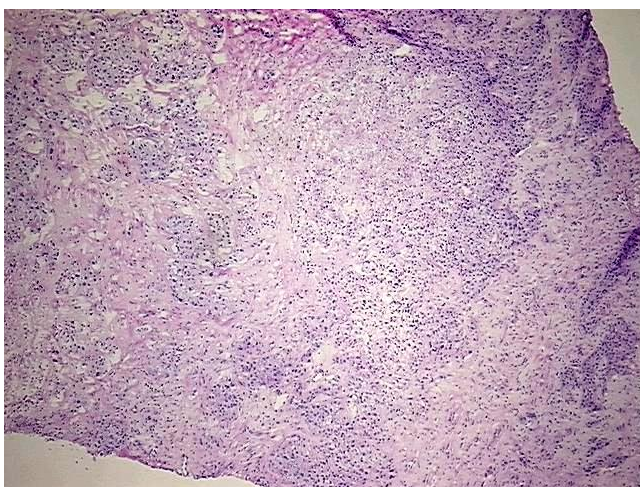
Product Type:	Total RNA
Disease State:	Cancer
Diagnosis Category:	Renal Pelvis Cancer
Tissue:	Renal pelvis
Frozen Sample ID:	FR0002FA8E
Case ID:	CI0000013270
Prep:	1
Vial ID:	RN00001CF2
Tissue of Origin:	Renal pelvis
Site of Finding:	Kidney
Appearance:	Tumor
Sample Diagnosis (from Pathology Verification):	Carcinoma of renal pelvis, transitional cell
Normal:	0%
Lesional:	0%
Tumor:	50%
Tumor Hypo/Acellular Stroma:	30%
Tumor Hypercellular Stroma:	0%
Necrosis:	20%
Bioanalyzer Ratio (28S/18S):	1.22
CASE Diagnosis (from medical center path report):	Carcinoma of renal pelvis, transitional cell
Age:	85



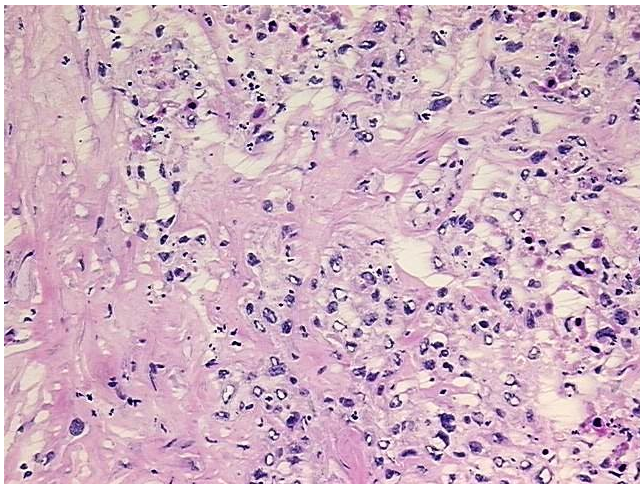
[View online »](#)

Gender:	Female
Race:	White or Caucasian
Tumor Grade:	AJCC G3: Poorly differentiated
Minimum Stage Grouping:	III
T (Extent of Primary Tumor):	T3
N (Lymph node metastasis):	NX
M (Distant metastasis):	MX
Diagnostic Test Results:	Proliferation index ~ PI,High; Ki67 ~ MIB1 ! by IHC,High; ERBB1 ~ EGFR ~ Epidermal growth factor receptor ! by IHC,Positive, strong; DNA ploidy ~ Cell ploidy,Aneuploid: DI not 0.5 or 1.0 or 2.0
Storage:	Store tissue total RNA at -80°C.
Stability:	These products are stable for one year from date of shipping when stored at -80°C without repeated freeze/thaws.

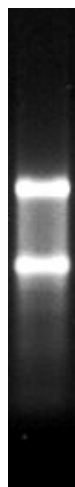
### Product images:



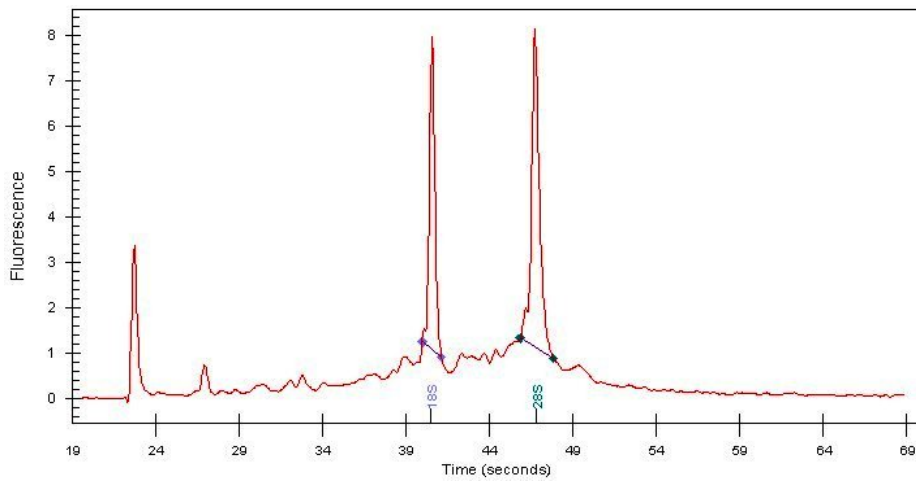
4x Image



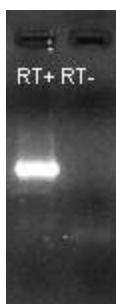
20x Image



RNA Gel Image



RNA Electropherogram Image



RNA RT-PCR Image