

## Product datasheet for **CR560500**

### Tissue Total RNA, Endometrium

#### Product data:

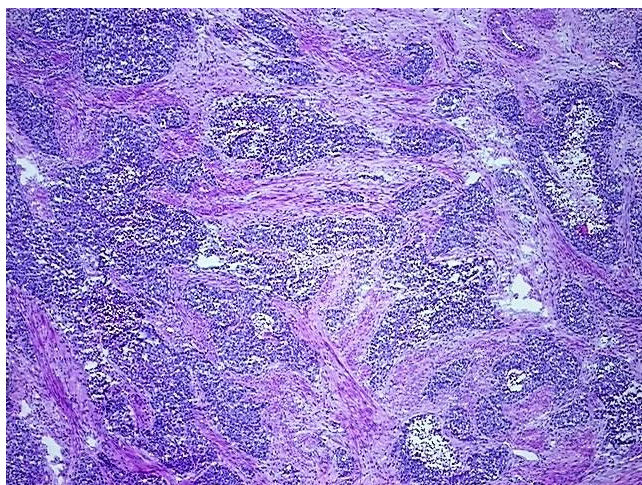
Product Type:	Total RNA
Disease State:	Cancer
Diagnosis Category:	Endometrial Cancer
Tissue:	Endometrium
Frozen Sample ID:	FR00035107
Case ID:	CI0000013352
Prep:	1
Vial ID:	RN00003B1E
Tissue of Origin:	Endometrium
Site of Finding:	Uterus
Appearance:	Tumor
Sample Diagnosis (from Pathology Verification):	Carcinoma of endometrium
Normal:	39%
Lesional:	0%
Tumor:	60%
Tumor Hypo/Acellular Stroma:	0%
Tumor Hypercellular Stroma:	0%
Necrosis:	1%
Pathology Verification notes from H&E review:	Non Tumor Structures: 100% Myometrium; Other Features/Comments: poorly differentiated endometrial carcinoma with squamous differentiation, Tumor area: 9 mm x 4.5 mm
Bioanalyzer Ratio (28S/18S):	1.39



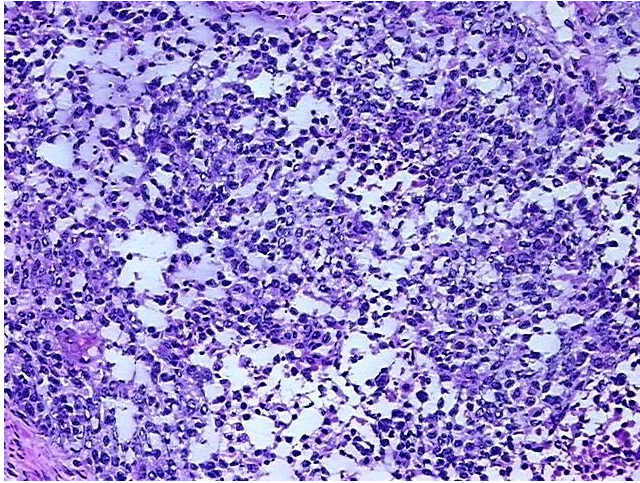
[View online »](#)

<b>CASE Diagnosis (from medical center path report):</b>	Carcinoma of endometrium, squamous cell
<b>Age:</b>	57
<b>Gender:</b>	Female
<b>Race:</b>	White or Caucasian
<b>Tumor Grade:</b>	FIGO G3: Poorly differentiated
<b>Minimum Stage Grouping:</b>	IV
<b>T (Extent of Primary Tumor):</b>	T3
<b>N (Lymph node metastasis):</b>	NX
<b>M (Distant metastasis):</b>	M1
<b>Diagnostic Test Results:</b>	Progesterone receptor ~ PR ! by IHC,Positive; Estrogen receptor ~ ER ! by IHC,Negative
<b>Storage:</b>	Store tissue total RNA at -80°C.
<b>Stability:</b>	These products are stable for one year from date of shipping when stored at -80°C without repeated freeze/thaws.

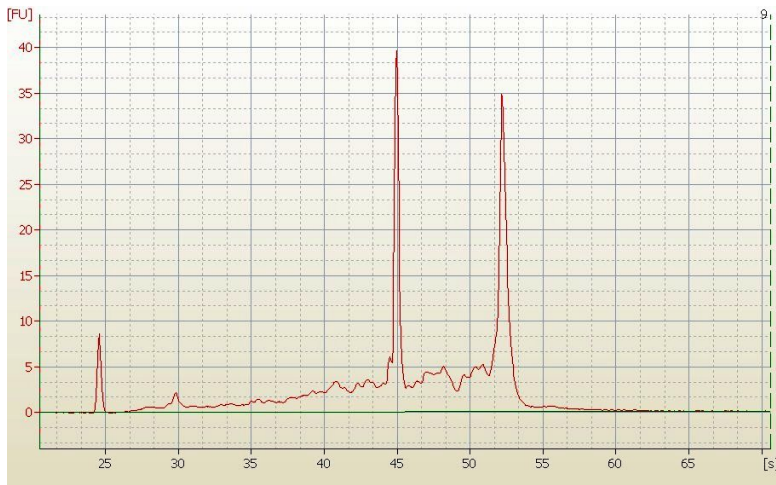
### Product images:



4x Image



20x Image



RNA Electropherogram Image



RNA RT-PCR Image