

## Product datasheet for CR560477

### Tissue Total RNA, Renal pelvis

#### Product data:

Product Type:	Total RNA
Disease State:	Cancer
Diagnosis Category:	Renal Pelvis Cancer
Tissue:	Renal pelvis
Frozen Sample ID:	FR00033032
Case ID:	CI0000010950
Prep:	1
Vial ID:	RN00001CBD
Tissue of Origin:	Renal pelvis
Site of Finding:	Kidney
Appearance:	Tumor
Sample Diagnosis (from Pathology Verification):	Carcinoma of renal pelvis, transitional cell
Normal:	0%
Lesional:	0%
Tumor:	65%
Tumor Hypo/Acellular Stroma:	10%
Tumor Hypercellular Stroma:	20%
Necrosis:	5%
Pathology Verification notes from H&E review:	Tumor Stroma (Hypo/Acellular): Mucin
Bioanalyzer Ratio (28S/18S):	1.52



[View online »](#)

**CASE Diagnosis (from medical center path report):** Carcinoma of renal pelvis, transitional cell

**Age:** 78

**Gender:** Female

**Race:** White or Caucasian

**Tumor Grade:** AJCC G3: Poorly differentiated

**Minimum Stage Grouping:** III

**T (Extent of Primary Tumor):** T3

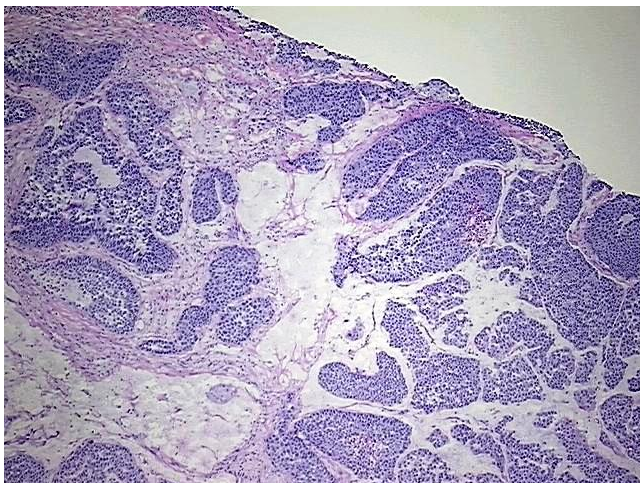
**N (Lymph node metastasis):** NX

**M (Distant metastasis):** MX

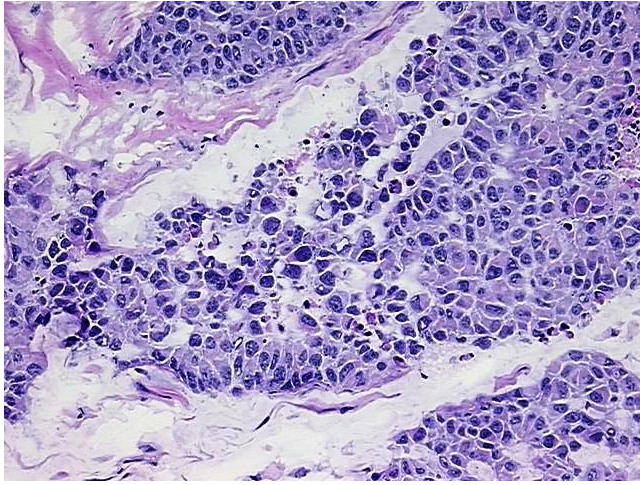
**Storage:** Store tissue total RNA at -80°C.

**Stability:** These products are stable for one year from date of shipping when stored at -80°C without repeated freeze/thaws.

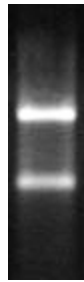
### Product images:



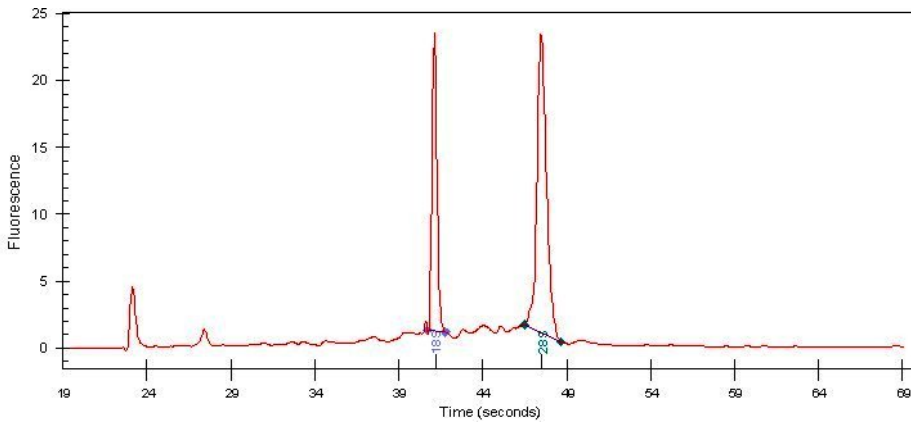
4x Image



20x Image



RNA Gel Image



RNA Electropherogram Image



RNA RT-PCR Image