

Product datasheet for CR560447

Tissue Total RNA, Kidney

Product data:

Product Type:	Total RNA
Disease State:	Cancer
Diagnosis Category:	Renal Cell Carcinoma
Tissue:	Kidney
Frozen Sample ID:	FR00030F29
Case ID:	CI0000010906
Prep:	1
Vial ID:	RN00003D94
Tissue of Origin:	Kidney
Site of Finding:	Kidney
Appearance:	Tumor
Sample Diagnosis (from Pathology Verification):	Carcinoma of kidney, renal cell, papillary
Normal:	0%
Lesional:	0%
Tumor:	75%
Tumor Hypo/Acellular Stroma:	25%
Tumor Hypercellular Stroma:	0%
Necrosis:	0%
Pathology Verification notes from H&E review:	Tumor: papillary cores contain abundant foam cells; Tumor Stroma (Cellular): Inflammatory cells
Bioanalyzer Ratio (28S/18S):	1.76



[View online »](#)

CASE Diagnosis (from medical center path report): Carcinoma of kidney, renal cell, papillary

Age: 71

Gender: Male

Race: White or Caucasian

Tumor Grade: Fuhrman G3: Nuclei very irregular

Minimum Stage Grouping: I

T (Extent of Primary Tumor): T1

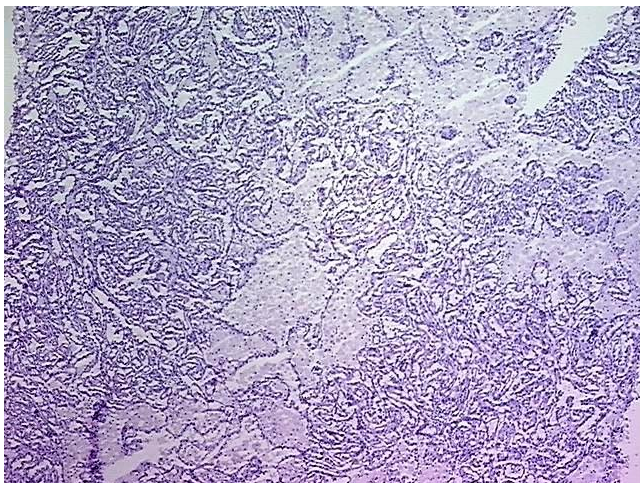
N (Lymph node metastasis): N0

M (Distant metastasis): MX

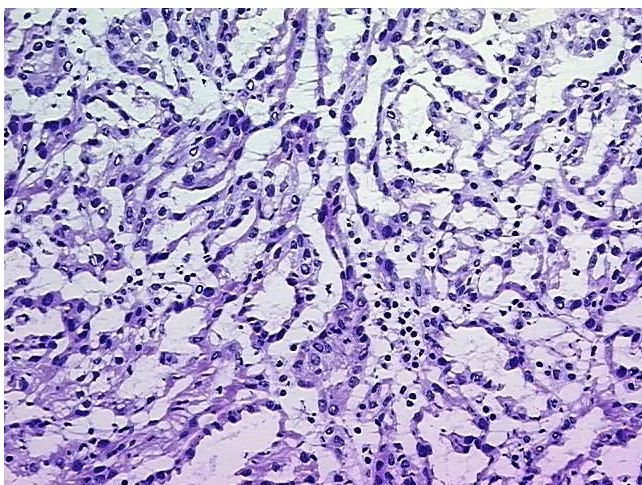
Storage: Store tissue total RNA at -80°C.

Stability: These products are stable for one year from date of shipping when stored at -80°C without repeated freeze/thaws.

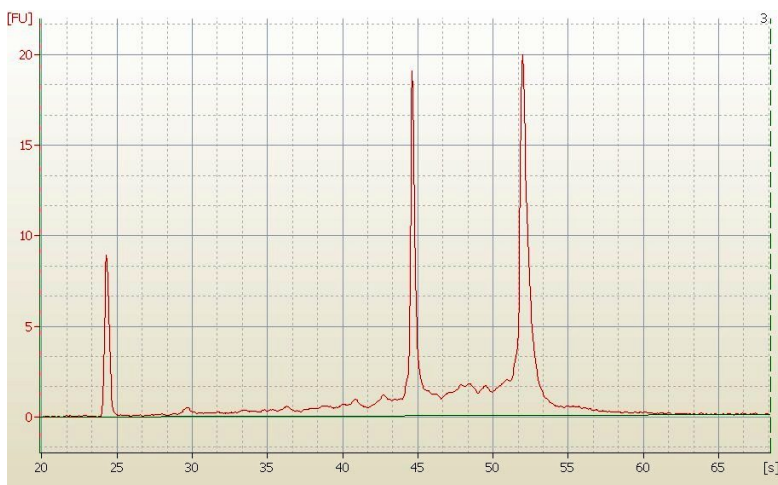
Product images:



4x Image



20x Image



RNA Electropherogram Image



RNA RT-PCR Image