

## Product datasheet for CR560440

### Tissue Total RNA, Thyroid gland

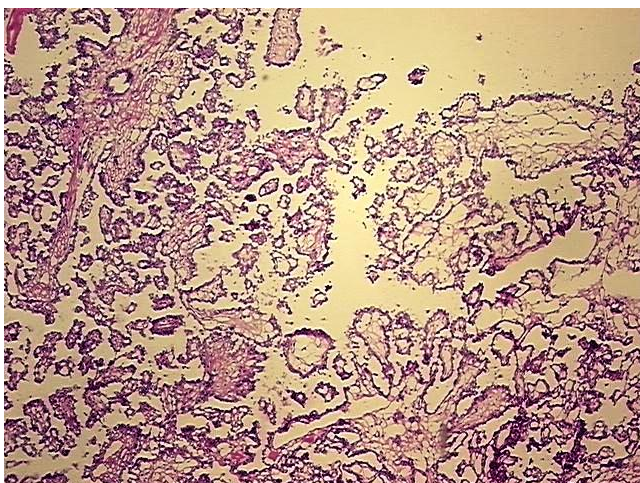
#### Product data:

Product Type:	Total RNA
Disease State:	Cancer
Diagnosis Category:	Thyroid Cancer
Tissue:	Thyroid gland
Frozen Sample ID:	FR00031B88
Case ID:	CI0000011401
Prep:	1
Vial ID:	RN000022DF
Tissue of Origin:	Thyroid gland
Site of Finding:	Thyroid gland
Appearance:	Tumor
Sample Diagnosis (from Pathology Verification):	Carcinoma of thyroid, papillary
Normal:	10%
Lesional:	0%
Tumor:	60%
Tumor Hypo/Acellular Stroma:	30%
Tumor Hypercellular Stroma:	0%
Necrosis:	0%
Bioanalyzer Ratio (28S/18S):	1.2
CASE Diagnosis (from medical center path report):	Carcinoma of thyroid, papillary
Age:	68

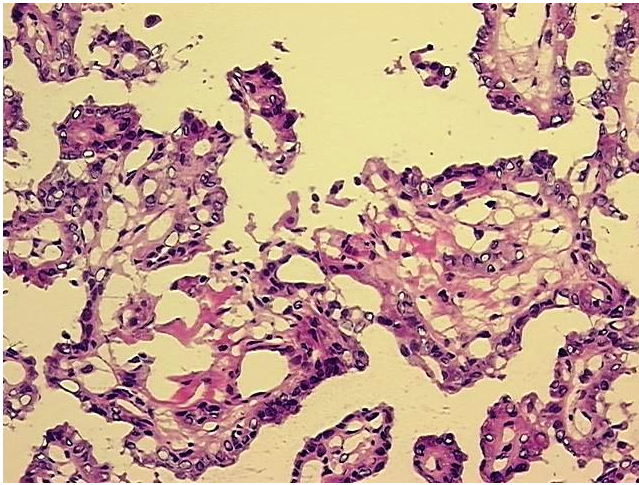


[View online »](#)

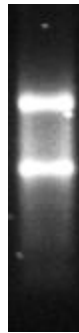
Gender:	Female
Race:	Black or African American
Tumor Grade:	Not Reported
Minimum Stage Grouping:	III
T (Extent of Primary Tumor):	T3
N (Lymph node metastasis):	NX
M (Distant metastasis):	MX
Storage:	Store tissue total RNA at -80°C.
Stability:	These products are stable for one year from date of shipping when stored at -80°C without repeated freeze/thaws.

**Product images:**

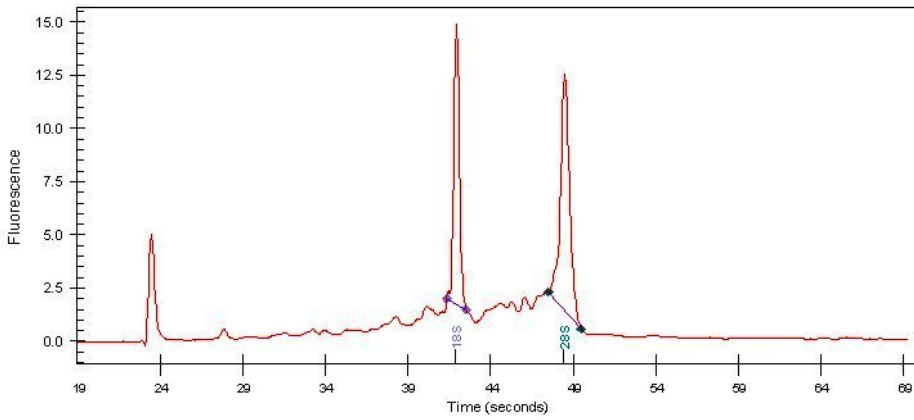
4x Image



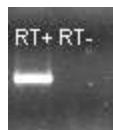
20x Image



RNA Gel Image



RNA Electropherogram Image



RNA RT-PCR Image