

## Product datasheet for **CR560439**

### Tissue Total RNA, Stomach

#### Product data:

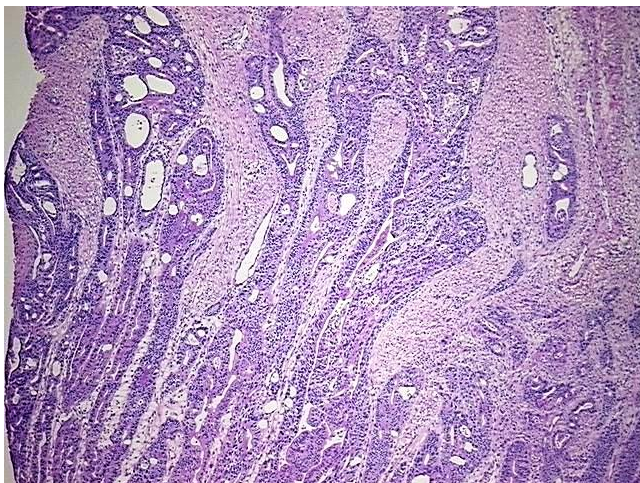
Product Type:	Total RNA
Disease State:	Cancer
Diagnosis Category:	Stomach Cancer
Tissue:	Stomach
Frozen Sample ID:	FR00037C6D
Case ID:	CI0000012282
Prep:	1
Vial ID:	RN00002430
Tissue of Origin:	Stomach
Site of Finding:	Stomach
Appearance:	Tumor
Sample Diagnosis (from Pathology Verification):	Adenocarcinoma of stomach
Normal:	0%
Lesional:	0%
Tumor:	70%
Tumor Hypo/Acellular Stroma:	30%
Tumor Hypercellular Stroma:	0%
Necrosis:	0%
Pathology Verification notes from H&E review:	Tumor Stroma (Cellular): Desmoplastic reaction, Inflammatory cells
Bioanalyzer Ratio (28S/18S):	0.85



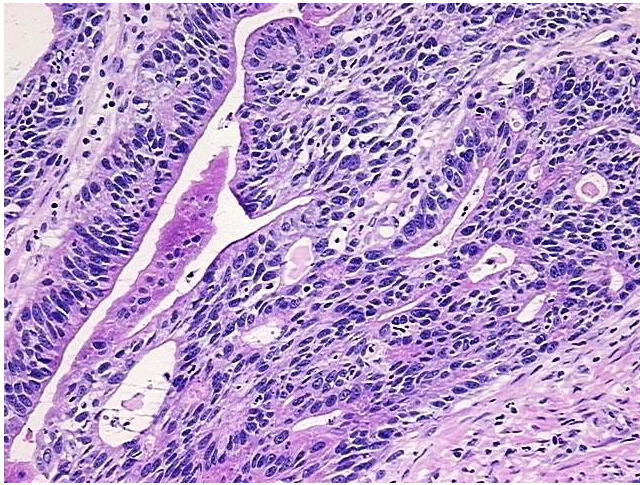
[View online »](#)

CASE Diagnosis (from medical center path report):	Adenocarcinoma of stomach
Age:	87
Gender:	Male
Race:	Black or African American
Tumor Grade:	AJCC G2: Moderately differentiated
Minimum Stage Grouping:	IB
T (Extent of Primary Tumor):	T2b
N (Lymph node metastasis):	N0
M (Distant metastasis):	MX
Storage:	Store tissue total RNA at -80°C.
Stability:	These products are stable for one year from date of shipping when stored at -80°C without repeated freeze/thaws.

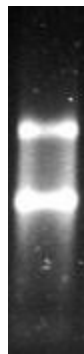
### Product images:



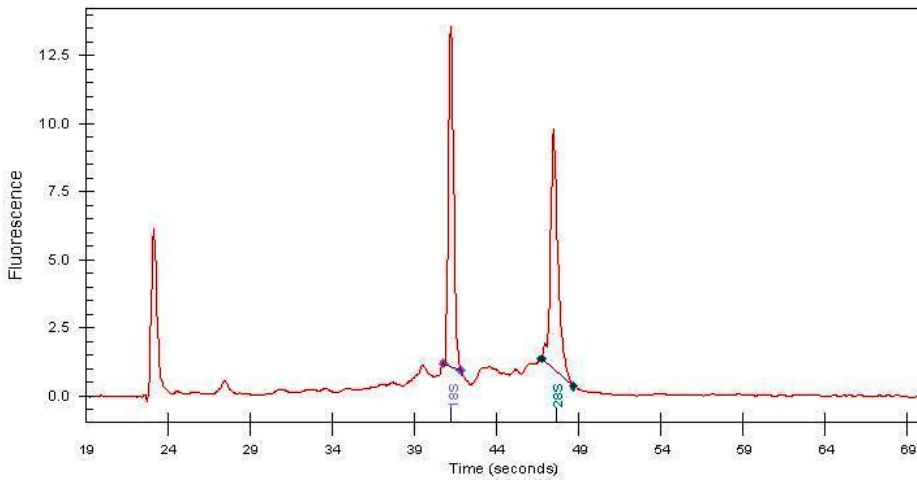
4x Image



20x Image



RNA Gel Image



RNA Electropherogram Image



RNA RT-PCR Image