

## Product datasheet for CR560437

### Tissue Total RNA, Thyroid gland

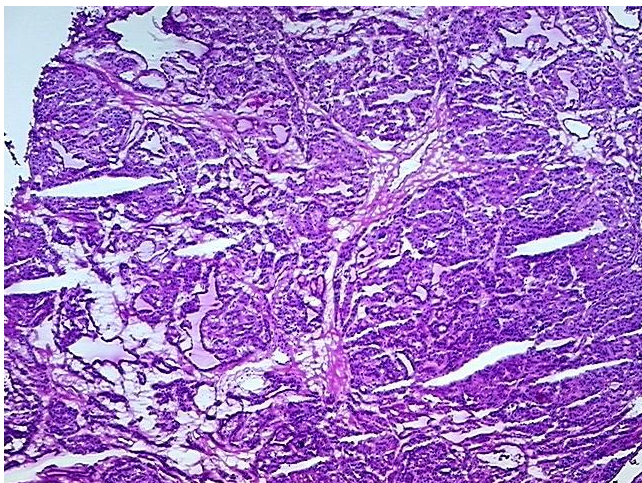
#### Product data:

|   |                                 |
|---|---------------------------------|
| Product Type:                                     | Total RNA                       |
| Disease State:                                    | Cancer                          |
| Diagnosis Category:                               | Thyroid Cancer                  |
| Tissue:   | Thyroid gland                   |
| Frozen Sample ID:                                 | FR00031CB8                      |
| Case ID:  | CI0000012313                    |
| Prep:   | 2                               |
| Vial ID:  | RN00002BED                      |
| Tissue of Origin:                                 | Thyroid gland                   |
| Site of Finding:                                  | Thyroid gland                   |
| Appearance:                                       | Tumor                           |
| Sample Diagnosis (from Pathology Verification):   | Carcinoma of thyroid, papillary |
| Normal:   | 0%                              |
| Lesional:   | 0%                              |
| Tumor:  | 90%                             |
| Tumor Hypo/Acellular Stroma:                      | 0%                              |
| Tumor Hypercellular Stroma:                       | 10%                             |
| Necrosis:   | 0%                              |
| Bioanalyzer Ratio (28S/18S):                      | 1.24                            |
| CASE Diagnosis (from medical center path report): | Carcinoma of thyroid, papillary |
| Age:  | 66                              |

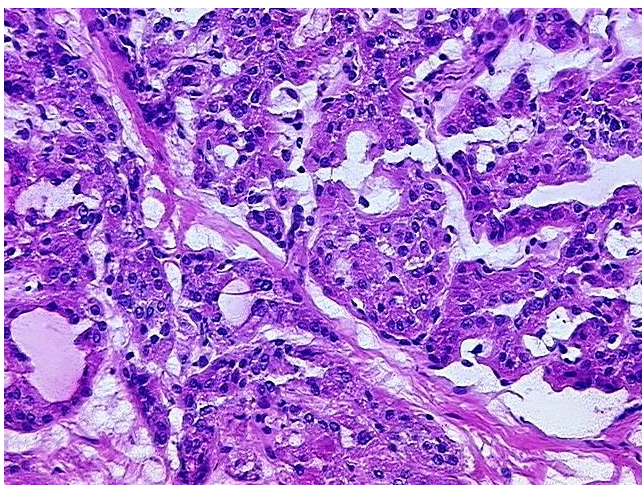


[View online »](#)

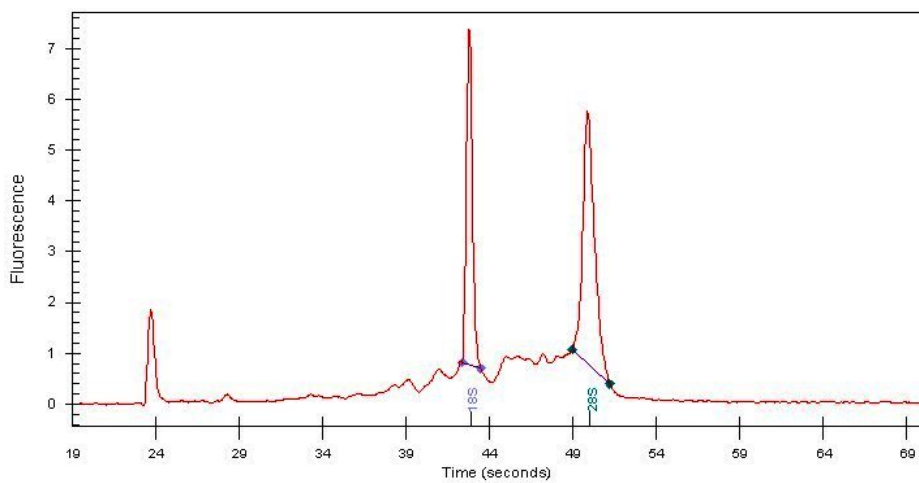
|                              |  |
|------------------------------|--|
| Gender:                      | Male   |
| Race:                        | White or Caucasian   |
| Tumor Grade:                 | Not Reported   |
| Minimum Stage Grouping:      | I  |
| T (Extent of Primary Tumor): | T1   |
| N (Lymph node metastasis):   | NX   |
| M (Distant metastasis):      | MX   |
| Storage:                     | Store tissue total RNA at -80°C.   |
| Stability:                   | These products are stable for one year from date of shipping when stored at -80°C without repeated freeze/thaws. |

**Product images:**

4x Image



20x Image



RNA Electropherogram Image



RNA RT-PCR Image