

Product datasheet for CR560435

Tissue Total RNA, Thyroid gland

Product data:

Product Type:	Total RNA
Disease State:	Cancer
Diagnosis Category:	Thyroid Cancer
Tissue:	Thyroid gland
Frozen Sample ID:	FR00032236
Case ID:	CI0000012332
Prep:	2
Vial ID:	RN00002BEE
Tissue of Origin:	Thyroid gland
Site of Finding:	Neck
Appearance:	Tumor
Sample Diagnosis (from Pathology Verification):	Carcinoma of thyroid, papillary, metastatic
Normal:	0%
Lesional:	0%
Tumor:	50%
Tumor Hypo/Acellular Stroma:	50%
Tumor Hypercellular Stroma:	0%
Necrosis:	0%
Pathology Verification notes from H&E review:	Tumor Stroma (Cellular): Fibroblastic cells, Inflammatory cells
Bioanalyzer Ratio (28S/18S):	1.19



[View online »](#)

CASE Diagnosis (from medical center path report): Carcinoma of thyroid, papillary, metastatic

Age: 80

Gender: Male

Race: White or Caucasian

Tumor Grade: Not Reported

Minimum Stage IVC

Grouping:

T (Extent of Primary Tumor): TX

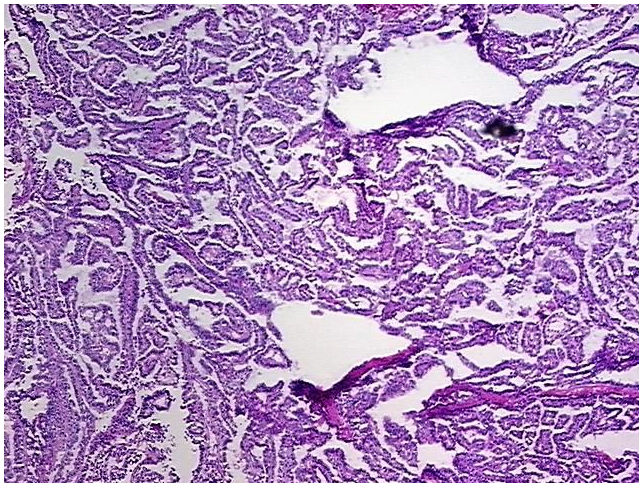
N (Lymph node metastasis): N0

M (Distant metastasis): M1

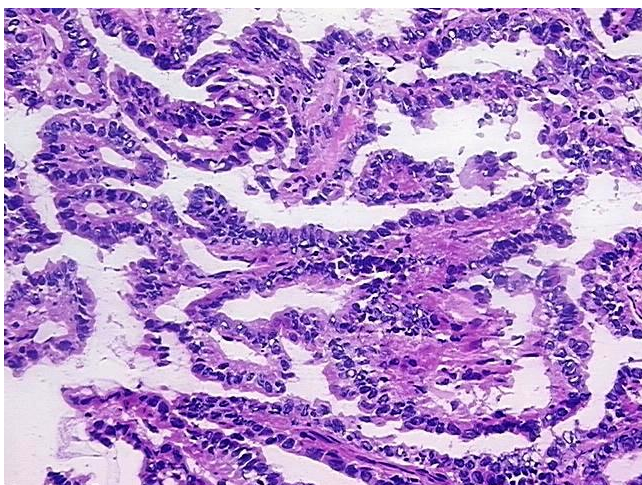
Storage: Store tissue total RNA at -80°C.

Stability: These products are stable for one year from date of shipping when stored at -80°C without repeated freeze/thaws.

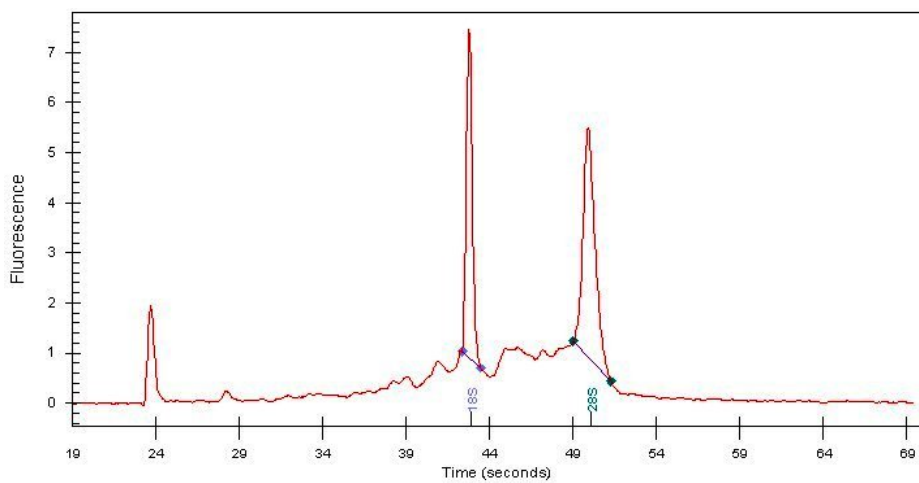
Product images:



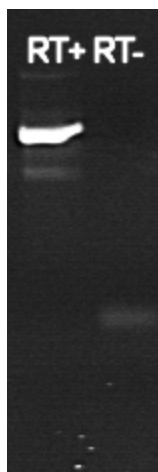
4x Image



20x Image



RNA Electropherogram Image



RNA RT-PCR Image