

## Product datasheet for CR560431

### Tissue Total RNA, Breast

#### Product data:

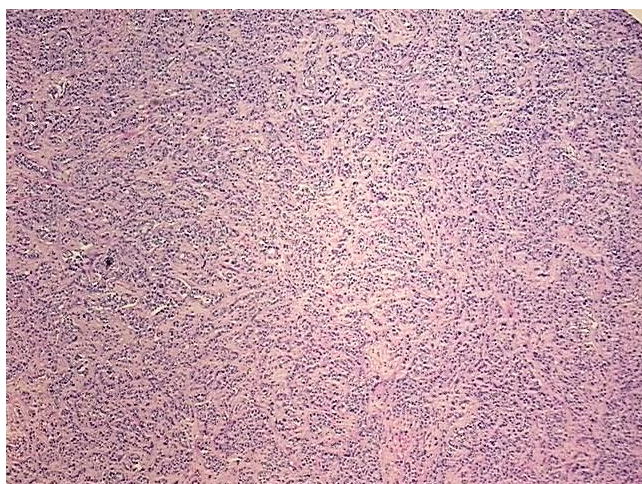
Product Type:	Total RNA
Disease State:	Cancer
Diagnosis Category:	Breast Cancer
Tissue:	Breast
Frozen Sample ID:	FR000324DF
Case ID:	CI0000012433
Prep:	2
Vial ID:	RN00002496
Tissue of Origin:	Breast
Site of Finding:	Lymph node
Appearance:	Tumor
Sample Diagnosis (from Pathology Verification):	Adenocarcinoma of breast, metastatic
Normal:	0%
Lesional:	0%
Tumor:	95%
Tumor Hypo/Acellular Stroma:	5%
Tumor Hypercellular Stroma:	0%
Necrosis:	0%
Bioanalyzer Ratio (28S/18S):	1.45
CASE Diagnosis (from medical center path report):	Adenocarcinoma of breast, metastatic
Age:	60



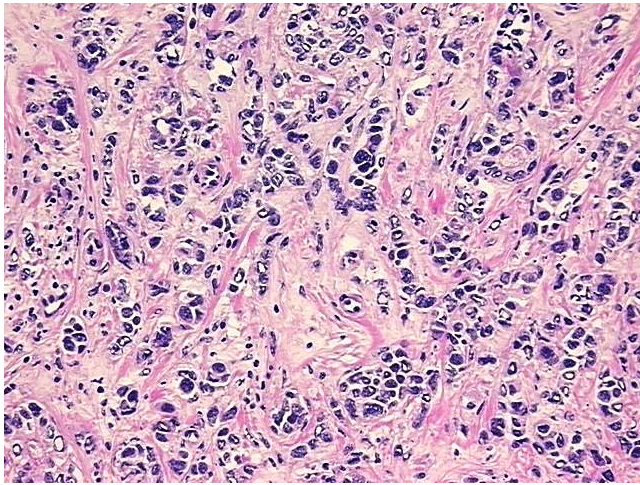
[View online »](#)

Gender:	Female
Race:	Black or African American
Tumor Grade:	Not Reported
Minimum Stage Grouping:	IIA
T (Extent of Primary Tumor):	TX
N (Lymph node metastasis):	N1a
M (Distant metastasis):	MX
Diagnostic Test Results:	Progesterone receptor ~ PR ! by IHC,Negative; Estrogen receptor ~ ER ! by IHC,Positive; HER2 ~ ERBB2 ~ Neu ! by IHC,Positive
Storage:	Store tissue total RNA at -80°C.
Stability:	These products are stable for one year from date of shipping when stored at -80°C without repeated freeze/thaws.

### Product images:



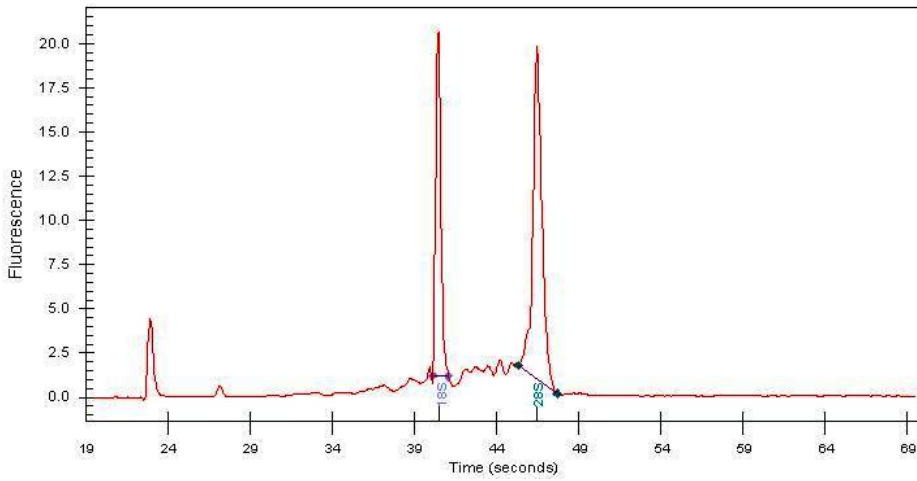
4x Image



20x Image



RNA Gel Image



RNA Electropherogram Image



RNA RT-PCR Image