

## Product datasheet for CR560412

### Tissue Total RNA, Lymphoid tissue

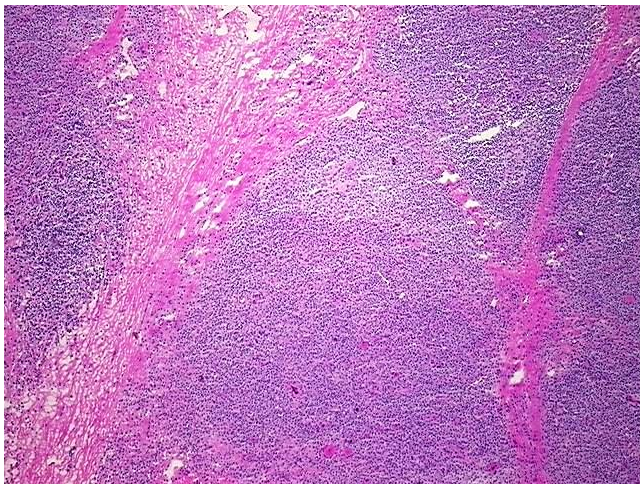
#### Product data:

Product Type:	Total RNA
Disease State:	Cancer
Diagnosis Category:	Lymphoma
Tissue:	Lymphoid tissue
Frozen Sample ID:	FR000310D5
Case ID:	CI0000011601
Prep:	1
Vial ID:	RN00001765
Tissue of Origin:	Lymphoid tissue
Site of Finding:	Thyroid gland
Appearance:	Tumor
Sample Diagnosis (from Pathology Verification):	Lymphoma, extranodal marginal zone B-cell
Normal:	10%
Lesional:	0%
Tumor:	60%
Tumor Hypo/Acellular Stroma:	0%
Tumor Hypercellular Stroma:	30%
Necrosis:	0%
Pathology Verification notes from H&E review:	hypo/acellular stroma: 100% fibrosis, Extra-nodal marginal zone lymphoma arising in the setting of intense auto-immune thyroiditis
Bioanalyzer Ratio (28S/18S):	1.21

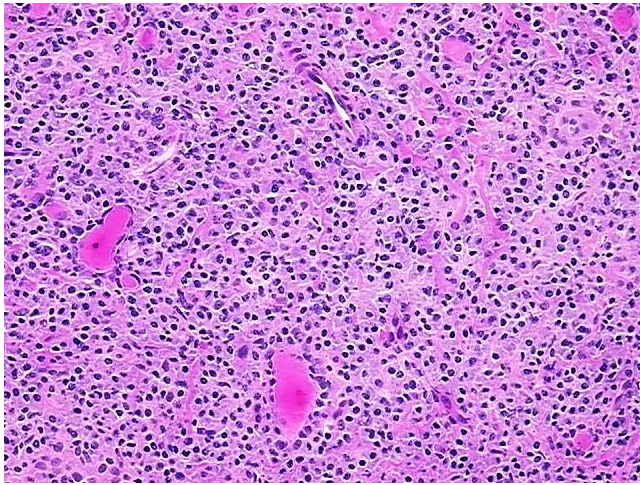


[View online »](#)

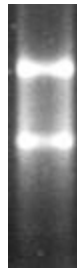
<b>CASE Diagnosis (from medical center path report):</b>	Lymphoma, extranodal marginal zone B-cell
<b>Age:</b>	29
<b>Gender:</b>	Male
<b>Race:</b>	White or Caucasian
<b>Tumor Grade:</b>	Not Reported
<b>Minimum Stage Grouping:</b>	IE
<b>T (Extent of Primary Tumor):</b>	Not applicable
<b>N (Lymph node metastasis):</b>	Not applicable
<b>M (Distant metastasis):</b>	Not applicable
<b>Diagnostic Test Results:</b>	Cytokeratin (Pan) ~ Keratin, Pan ! by IHC,Positive; Kappa light chain ! by IHC,Positive, monoclonal; Lambda light chain ! by IHC,Positive in non-tumor cells; CD20 ~ B1 ~ Leu16 ! by IHC,Negative; CD79a ~ Ig alpha ! by IHC,Positive
<b>Storage:</b>	Store tissue total RNA at -80°C.
<b>Stability:</b>	These products are stable for one year from date of shipping when stored at -80°C without repeated freeze/thaws.

**Product images:**

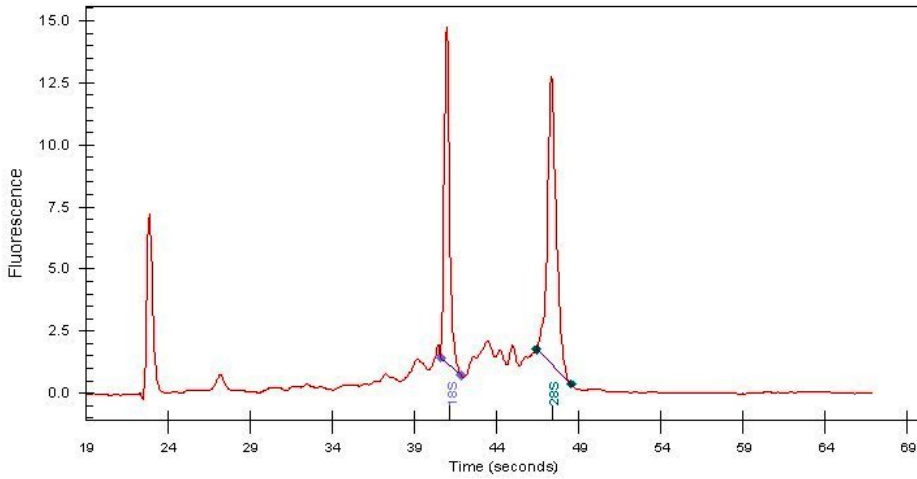
4x Image



20x Image



RNA Gel Image



RNA Electropherogram Image



RNA RT-PCR Image