

Product datasheet for CR560407

Tissue Total RNA, Soft tissue

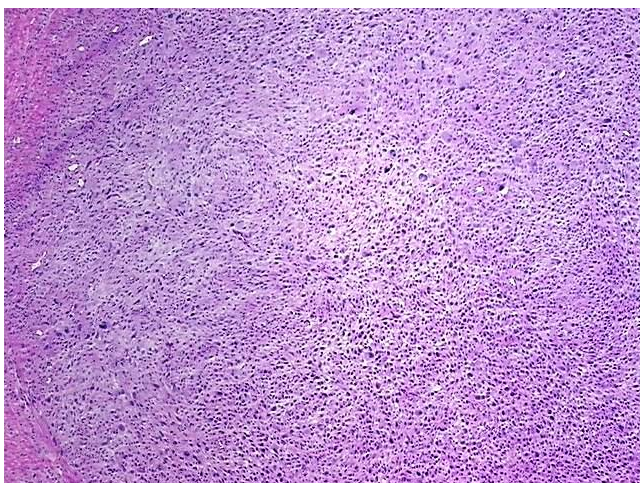
Product data:

Product Type:	Total RNA
Disease State:	Cancer
Diagnosis Category:	Sarcoma
Tissue:	Soft tissue
Frozen Sample ID:	FR00031DF1
Case ID:	CI0000012272
Prep:	1
Vial ID:	RN00003241
Tissue of Origin:	Soft tissue
Site of Finding:	Leg
Appearance:	Tumor
Sample Diagnosis (from Pathology Verification):	Myxofibrosarcoma of soft tissue
Normal:	10%
Lesional:	0%
Tumor:	80%
Tumor Hypo/Acellular Stroma:	2%
Tumor Hypercellular Stroma:	8%
Necrosis:	0%
Bioanalyzer Ratio (28S/18S):	1.69
CASE Diagnosis (from medical center path report):	Myxofibrosarcoma of soft tissue
Age:	77

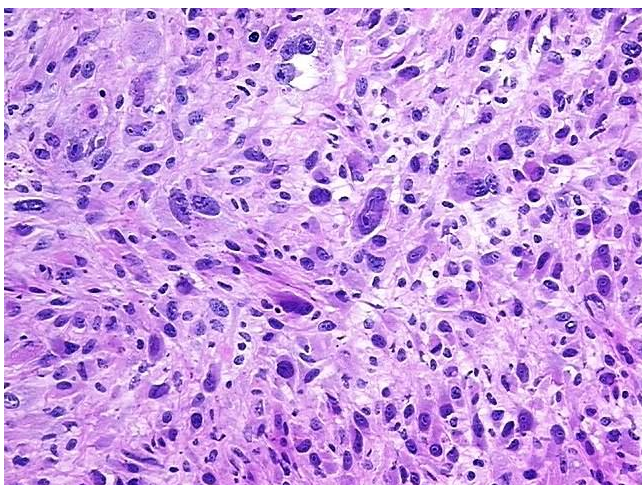


[View online »](#)

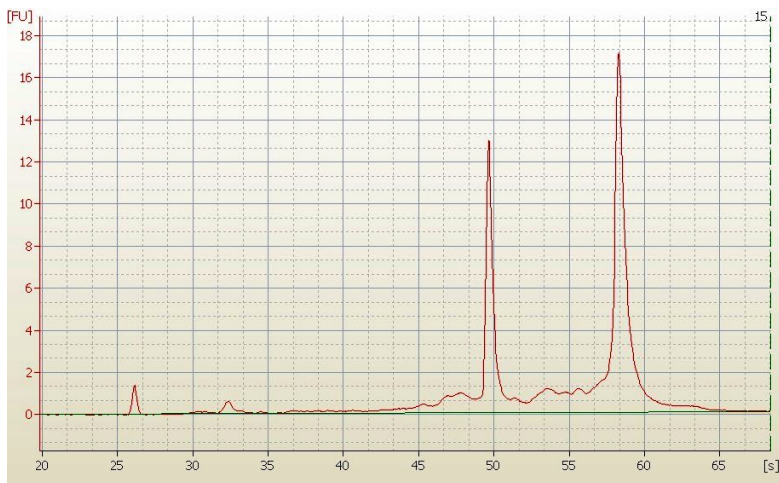
Gender:	Male
Race:	White or Caucasian
Tumor Grade:	AJCC G3: Poorly differentiated
Minimum Stage Grouping:	II
T (Extent of Primary Tumor):	T2a
N (Lymph node metastasis):	NX
M (Distant metastasis):	MX
Storage:	Store tissue total RNA at -80°C.
Stability:	These products are stable for one year from date of shipping when stored at -80°C without repeated freeze/thaws.

Product images:

4x Image



20x Image



RNA Electropherogram Image



RNA RT-PCR Image