

## Product datasheet for CR560402

### Tissue Total RNA, Kidney

#### Product data:

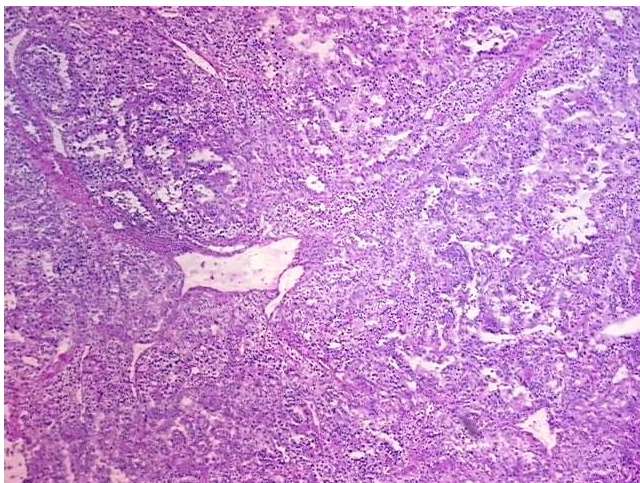
Product Type:	Total RNA
Disease State:	Cancer
Diagnosis Category:	Renal Cell Carcinoma
Tissue:	Kidney
Frozen Sample ID:	FR0003156C
Case ID:	CI0000011656
Prep:	1
Vial ID:	RN00001A26
Tissue of Origin:	Kidney
Site of Finding:	Lymph node
Appearance:	Tumor
Sample Diagnosis (from Pathology Verification):	Carcinoma of kidney, renal cell, metastatic
Normal:	0%
Lesional:	0%
Tumor:	90%
Tumor Hypo/Acellular Stroma:	10%
Tumor Hypercellular Stroma:	0%
Necrosis:	0%
Pathology Verification notes from H&E review:	tumor stroma contains prominent lymphoplasmacytic infiltrate
Bioanalyzer Ratio (28S/18S):	2.01



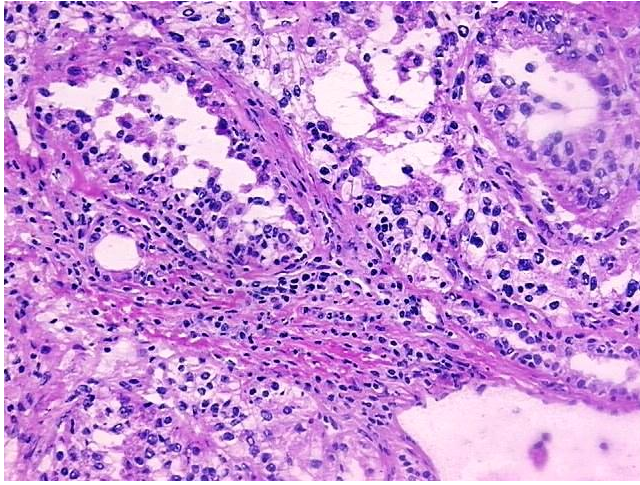
[View online »](#)

<b>CASE Diagnosis (from medical center path report):</b>	Carcinoma of kidney, renal cell, metastatic
<b>Age:</b>	46
<b>Gender:</b>	Female
<b>Race:</b>	White or Caucasian
<b>Tumor Grade:</b>	Fuhrman G4: Nuclei bizarre and multilobated
<b>Minimum Stage Grouping:</b>	IV
<b>T (Extent of Primary Tumor):</b>	T4
<b>N (Lymph node metastasis):</b>	N1
<b>M (Distant metastasis):</b>	MX
<b>Storage:</b>	Store tissue total RNA at -80°C.
<b>Stability:</b>	These products are stable for one year from date of shipping when stored at -80°C without repeated freeze/thaws.

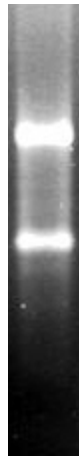
### Product images:



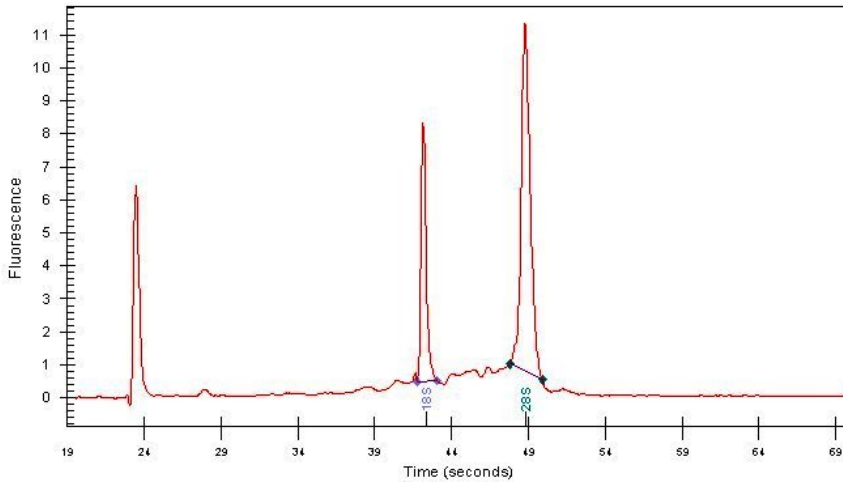
4x Image



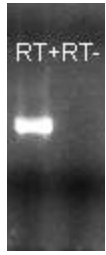
20x Image



RNA Gel Image



RNA Electropherogram Image



RNA RT-PCR Image