

Product datasheet for CR560386

Tissue Total RNA, Esophagus

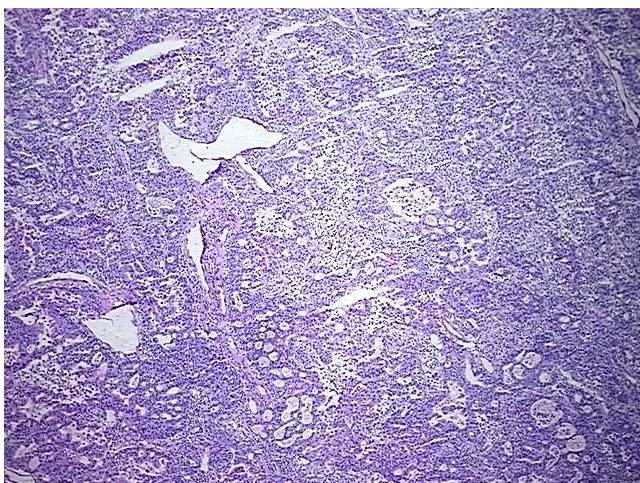
Product data:

Product Type:	Total RNA
Disease State:	Cancer
Diagnosis Category:	Esophageal/Gastroesophageal Cancer
Tissue:	Esophagus
Frozen Sample ID:	FR0003DF63
Case ID:	CI0000015646
Prep:	1
Vial ID:	RN00001F3A
Tissue of Origin:	Esophagus
Site of Finding:	Esophagus
Appearance:	Tumor
Sample Diagnosis (from Pathology Verification):	Adenocarcinoma of esophagus
Normal:	0%
Lesional:	0%
Tumor:	60%
Tumor Hypo/Acellular Stroma:	20%
Tumor Hypercellular Stroma:	0%
Necrosis:	20%
Bioanalyzer Ratio (28S/18S):	1.41
CASE Diagnosis (from medical center path report):	Adenocarcinoma of esophagus
Age:	83

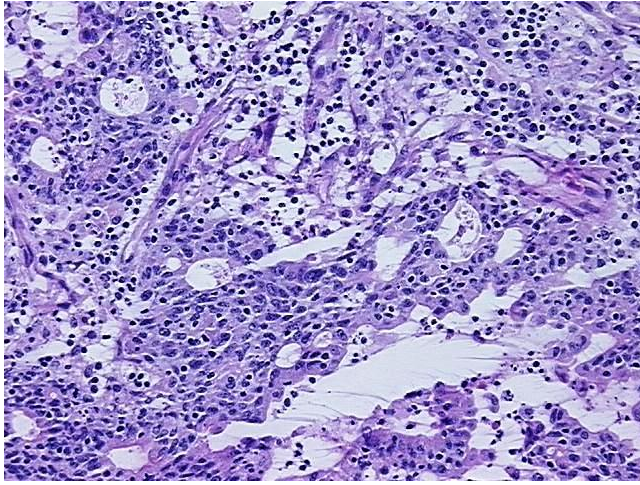


[View online »](#)

Gender:	Male
Race:	White or Caucasian
Tumor Grade:	AJCC G3: Poorly differentiated
Minimum Stage Grouping:	III
T (Extent of Primary Tumor):	T3
N (Lymph node metastasis):	N1
M (Distant metastasis):	MX
Storage:	Store tissue total RNA at -80°C.
Stability:	These products are stable for one year from date of shipping when stored at -80°C without repeated freeze/thaws.

Product images:

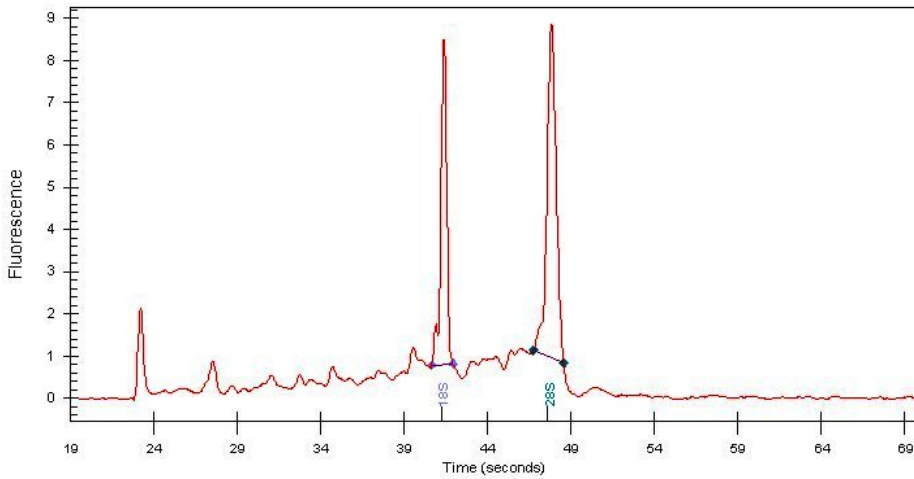
4x Image



20x Image



RNA Gel Image



RNA Electropherogram Image



RNA RT-PCR Image