

## Product datasheet for CR560382

### Tissue Total RNA, Lymphoid tissue

#### Product data:

Product Type:	Total RNA
Disease State:	Cancer
Diagnosis Category:	Lymphoma
Tissue:	Lymphoid tissue
Frozen Sample ID:	FR0003A5C1
Case ID:	CI0000015682
Prep:	1
Vial ID:	RN00003A83
Tissue of Origin:	Lymphoid tissue
Site of Finding:	Lymph node
Appearance:	Tumor
Sample Diagnosis (from Pathology Verification):	Lymphoma, small lymphocytic
Normal:	10%
Lesional:	0%
Tumor:	90%
Tumor Hypo/Acellular Stroma:	0%
Tumor Hypercellular Stroma:	0%
Necrosis:	0%
Bioanalyzer Ratio (28S/18S):	1.11
CASE Diagnosis (from medical center path report):	Adenocarcinoma of prostate
Age:	52

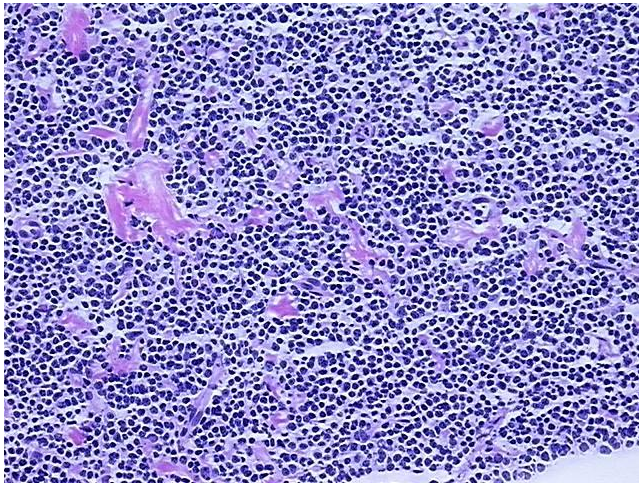

[View online »](#)

<b>Gender:</b>	Male
<b>Race:</b>	White or Caucasian
<b>Tumor Grade:</b>	Gleason Score: 3+3=6/10
<b>Minimum Stage Grouping:</b>	II
<b>T (Extent of Primary Tumor):</b>	T2c
<b>N (Lymph node metastasis):</b>	N0
<b>M (Distant metastasis):</b>	MX
<b>Diagnostic Test Results:</b>	CD3 ~ Leu4 ~ UCHT1 ! by FC,Positive in minority of cells; CD52 ~ CAMPATH-1,Positive; Lambda light chain ! by FC,Reported as Performed or Reviewed; HLA-(DR, DP, DQ) ~ MHC class II ~ Human major histocompatibility class II antigens ! by IHC,Positi
<b>Storage:</b>	Store tissue total RNA at -80°C.
<b>Stability:</b>	These products are stable for one year from date of shipping when stored at -80°C without repeated freeze/thaws.

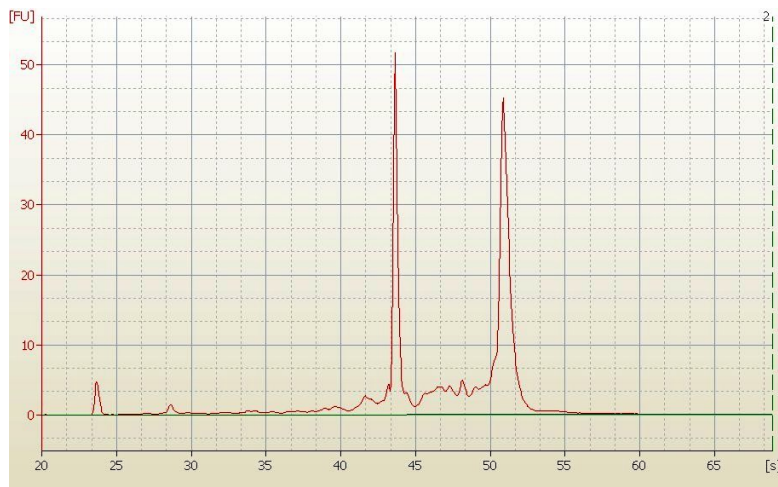
### Product images:



4x Image



20x Image



RNA Electropherogram Image



RNA RT-PCR Image