

## Product datasheet for CR560360

### Tissue Total RNA, Thyroid gland

#### Product data:

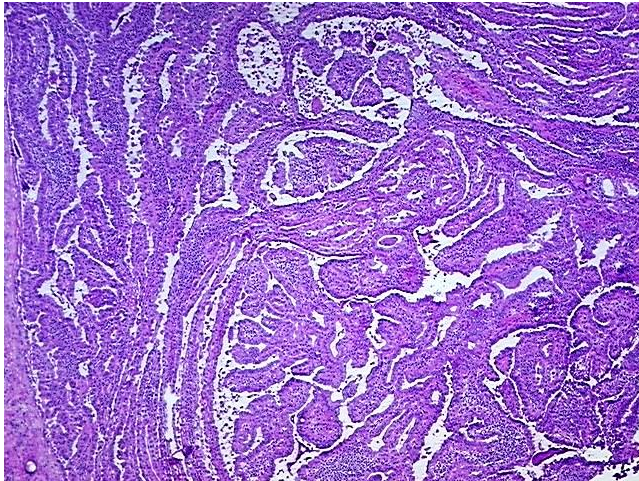
Product Type:	Total RNA
Disease State:	Cancer
Diagnosis Category:	Thyroid Cancer
Tissue:	Thyroid gland
Frozen Sample ID:	FR5B344991
Case ID:	CI0000015357
Prep:	2
Vial ID:	RN00002BF8
Tissue of Origin:	Thyroid gland
Site of Finding:	Thyroid gland
Appearance:	Tumor
Sample Diagnosis (from Pathology Verification):	Carcinoma of thyroid, papillary
Normal:	0%
Lesional:	5%
Tumor:	85%
Tumor Hypo/Acellular Stroma:	0%
Tumor Hypercellular Stroma:	10%
Necrosis:	0%
Pathology Verification notes from H&E review:	Lesion (5%): Thyroiditis, lymphocytic 100%; Inflammation: Mild Lymphoplasmacytic infiltrate
Bioanalyzer Ratio (28S/18S):	1.09



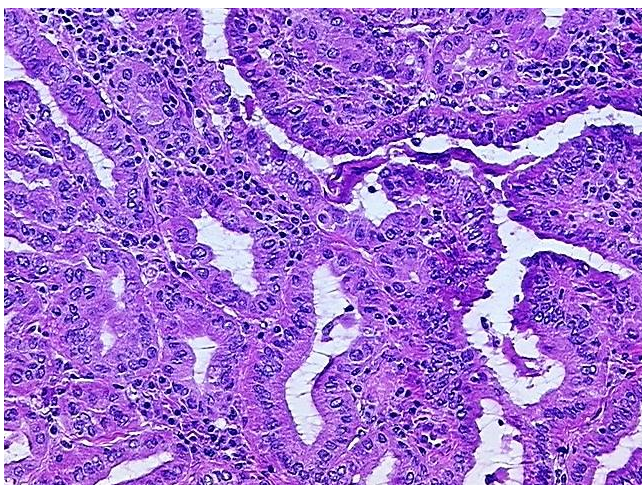
[View online »](#)

CASE Diagnosis (from medical center path report):	Carcinoma of thyroid, papillary
Age:	36
Gender:	Male
Race:	White or Caucasian
Tumor Grade:	Not Reported
Minimum Stage Grouping:	I
T (Extent of Primary Tumor):	T3
N (Lymph node metastasis):	N1a
M (Distant metastasis):	MX
Storage:	Store tissue total RNA at -80°C.
Stability:	These products are stable for one year from date of shipping when stored at -80°C without repeated freeze/thaws.

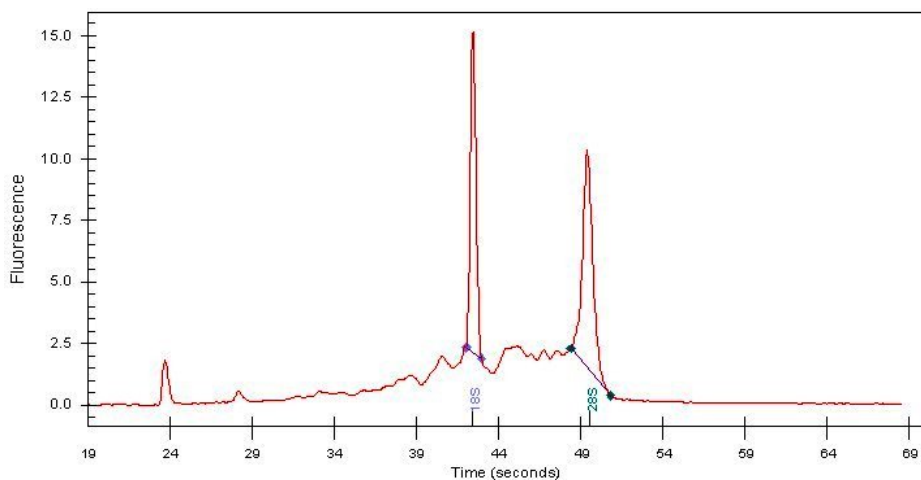
### Product images:



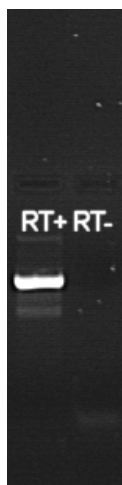
4x Image



20x Image



RNA Electropherogram Image



RNA RT-PCR Image