

## Product datasheet for **CR560357**

### Tissue Total RNA, Lung: left upper lobe

#### Product data:

Product Type:	Total RNA
Disease State:	Cancer
Diagnosis Category:	Lung Cancer
Tissue:	Lung
Frozen Sample ID:	FR00038A41
Case ID:	CI0000015589
Prep:	3
Vial ID:	RN000023DD
Tissue of Origin:	Lung: left upper lobe
Site of Finding:	Lung: left upper lobe
Appearance:	Tumor
Sample Diagnosis (from Pathology Verification):	Adenocarcinoma of lung
Normal:	20%
Lesional:	0%
Tumor:	65%
Tumor Hypo/Acellular Stroma:	15%
Tumor Hypercellular Stroma:	0%
Necrosis:	0%
Pathology Verification notes from H&E review:	Tumor: with acinar and bronchioalveolar patterns; Tumor Stroma (Cellular): Desmoplastic reaction; Inflammation: Mild Mixed inflammatory infiltrate
Bioanalyzer Ratio (28S/18S):	1.5



[View online »](#)

**CASE Diagnosis (from medical center path report):** Adenocarcinoma of lung

**Age:** 71

**Gender:** Female

**Race:** White or Caucasian

**Tumor Grade:** AJCC G1: Well differentiated

**Minimum Stage Grouping:** IB

**T (Extent of Primary Tumor):** T2

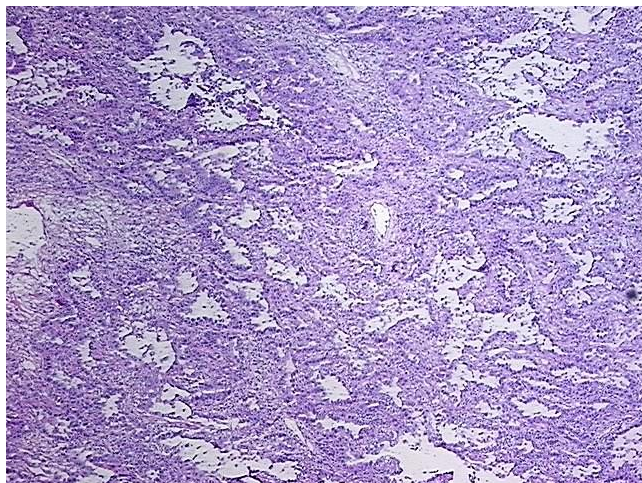
**N (Lymph node metastasis):** N0

**M (Distant metastasis):** MX

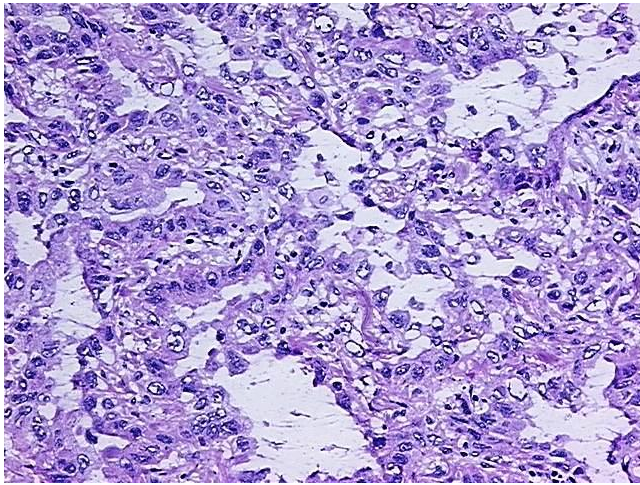
**Storage:** Store tissue total RNA at -80°C.

**Stability:** These products are stable for one year from date of shipping when stored at -80°C without repeated freeze/thaws.

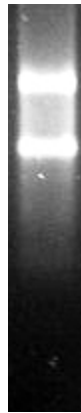
### Product images:



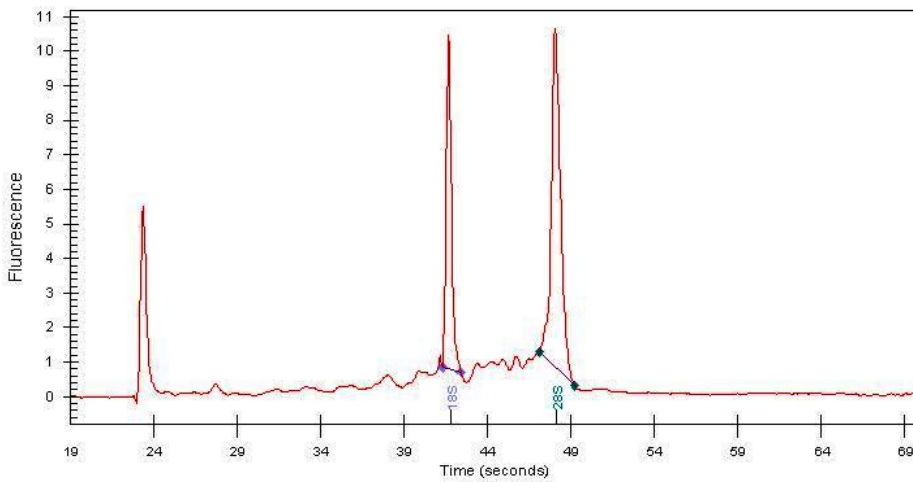
4x Image



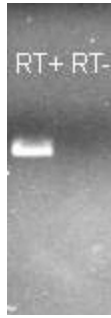
20x Image



RNA Gel Image



RNA Electropherogram Image



RNA RT-PCR Image