

Product datasheet for CR560349

Tissue Total RNA, Lung

Product data:

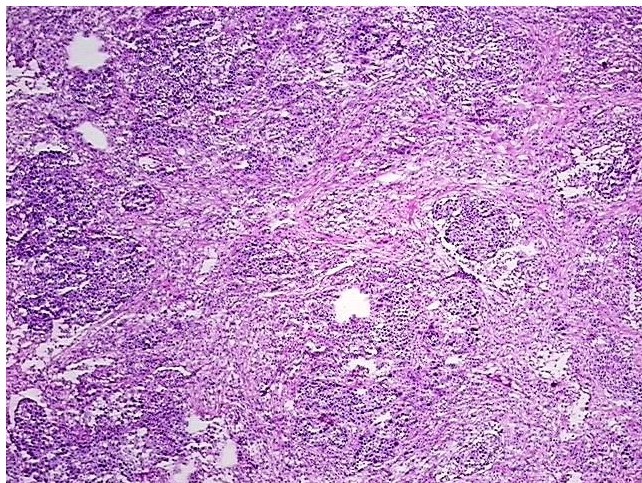
Product Type:	Total RNA
Disease State:	Cancer
Diagnosis Category:	Lung Cancer
Tissue:	Lung
Frozen Sample ID:	FR0000186A
Case ID:	CI0000000011
Prep:	3
Vial ID:	RN00000F3D
Tissue of Origin:	Lung
Site of Finding:	Lung
Appearance:	Tumor
Sample Diagnosis (from Pathology Verification):	Carcinoma of lung, squamous cell
Normal:	15%
Lesional:	0%
Tumor:	40%
Tumor Hypo/Acellular Stroma:	43%
Tumor Hypercellular Stroma:	0%
Necrosis:	2%
Pathology Verification notes from H&E review:	Contains dense lymphoplasmacytic infiltrate
Bioanalyzer Ratio (28S/18S):	1.35



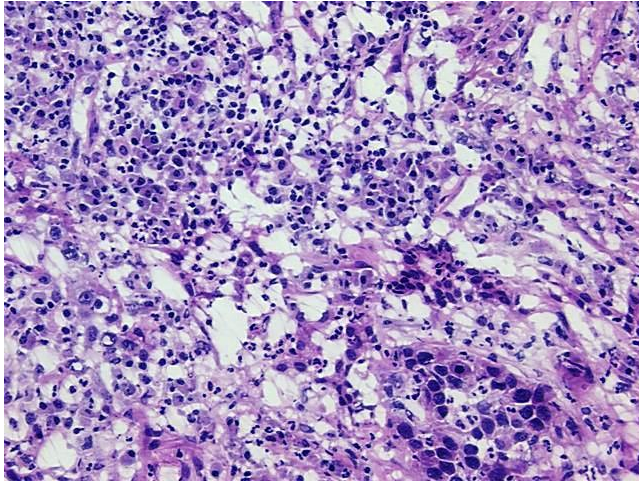
[View online »](#)

CASE Diagnosis (from medical center path report):	Carcinoma of lung, squamous cell
Age:	58
Gender:	Male
Race:	White or Caucasian
Tumor Grade:	AJCC G3: Poorly differentiated
Minimum Stage Grouping:	IIA
T (Extent of Primary Tumor):	T1
N (Lymph node metastasis):	N1
M (Distant metastasis):	MX
Storage:	Store tissue total RNA at -80°C.
Stability:	These products are stable for one year from date of shipping when stored at -80°C without repeated freeze/thaws.

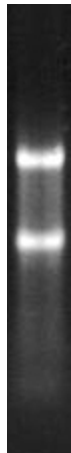
Product images:



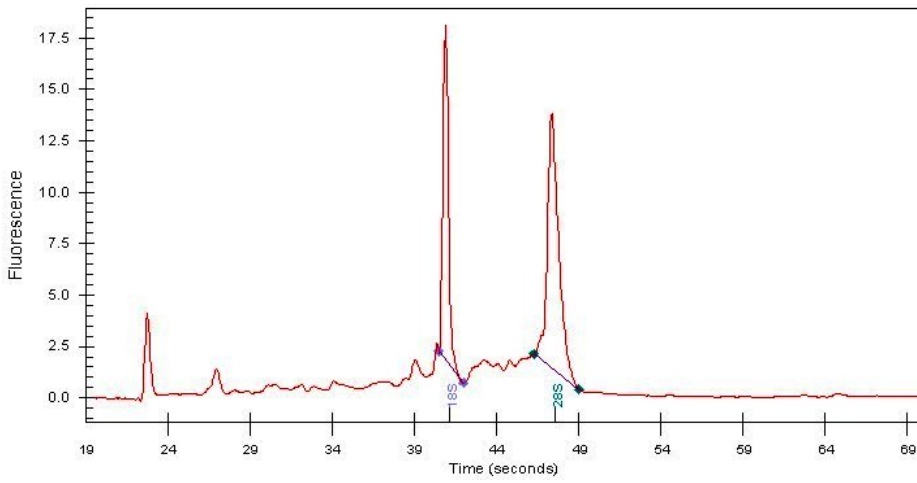
4x Image



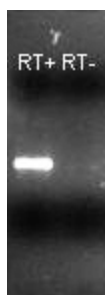
20x Image



RNA Gel Image



RNA Electropherogram Image



RNA RT-PCR Image