

## Product datasheet for CR560338

### Tissue Total RNA, Breast

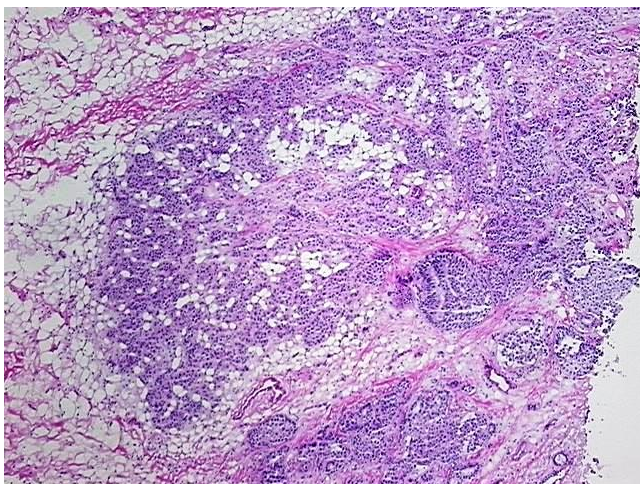
#### Product data:

Product Type:	Total RNA
Disease State:	Cancer
Diagnosis Category:	Breast Cancer
Tissue:	Breast
Frozen Sample ID:	FR0003E337
Case ID:	CI0000016816
Prep:	1
Vial ID:	RN00002E9B
Tissue of Origin:	Breast
Site of Finding:	Breast
Appearance:	Tumor
Sample Diagnosis (from Pathology Verification):	Adenocarcinoma of breast, ductal
Normal:	30%
Lesional:	0%
Tumor:	50%
Tumor Hypo/Acellular Stroma:	20%
Tumor Hypercellular Stroma:	0%
Necrosis:	0%
Bioanalyzer Ratio (28S/18S):	1.76
CASE Diagnosis (from medical center path report):	Adenocarcinoma of breast, ductal
Age:	76

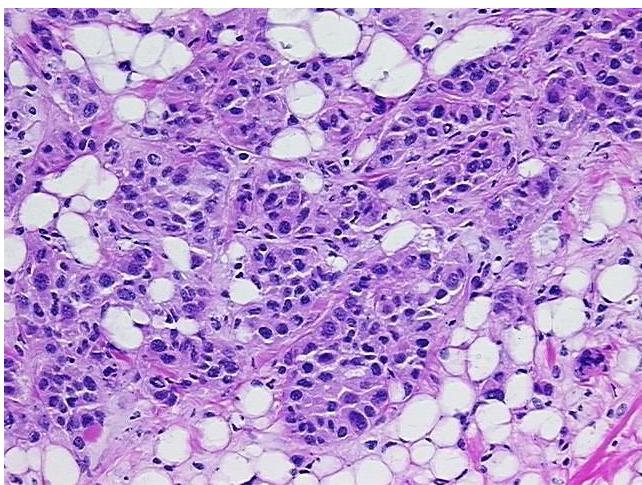


[View online »](#)

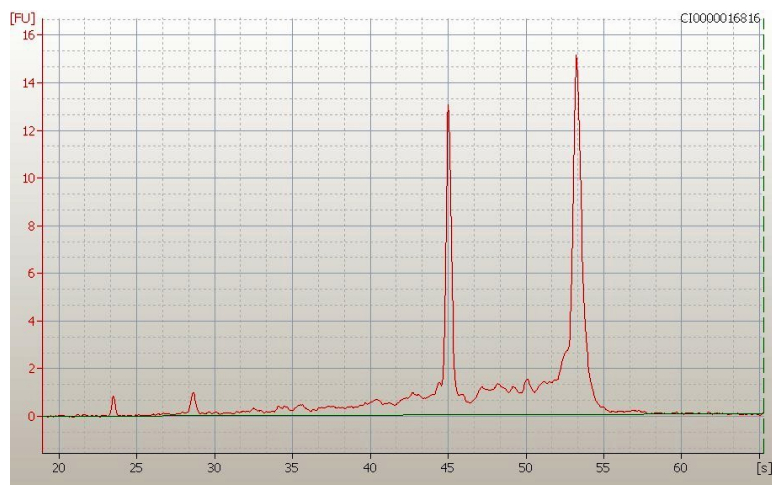
Gender:	Female
Race:	Black or African American
Tumor Grade:	Nottingham G1: 3-5 points Low combined grade (favorable)
Minimum Stage Grouping:	IIIB
T (Extent of Primary Tumor):	T4
N (Lymph node metastasis):	N1a
M (Distant metastasis):	MX
Diagnostic Test Results:	HER2 ~ ERBB2 ~ Neu ! by IHC,Negative
Storage:	Store tissue total RNA at -80°C.
Stability:	These products are stable for one year from date of shipping when stored at -80°C without repeated freeze/thaws.

**Product images:**

4x Image



20x Image



RNA Electropherogram Image



RNA RT-PCR Image